

Freezer Service Gelato Case

Lengths include end panels

- G12F 47-3/4"L x 43-1/2"D x 53-3/4"H
- G18F 67-3/4"L x 43-1/2"D x 53-3/4"H
- G24F 84-3/4"L x 43-1/2"D x 53-3/4"H



MODEL SHOWN: G12F

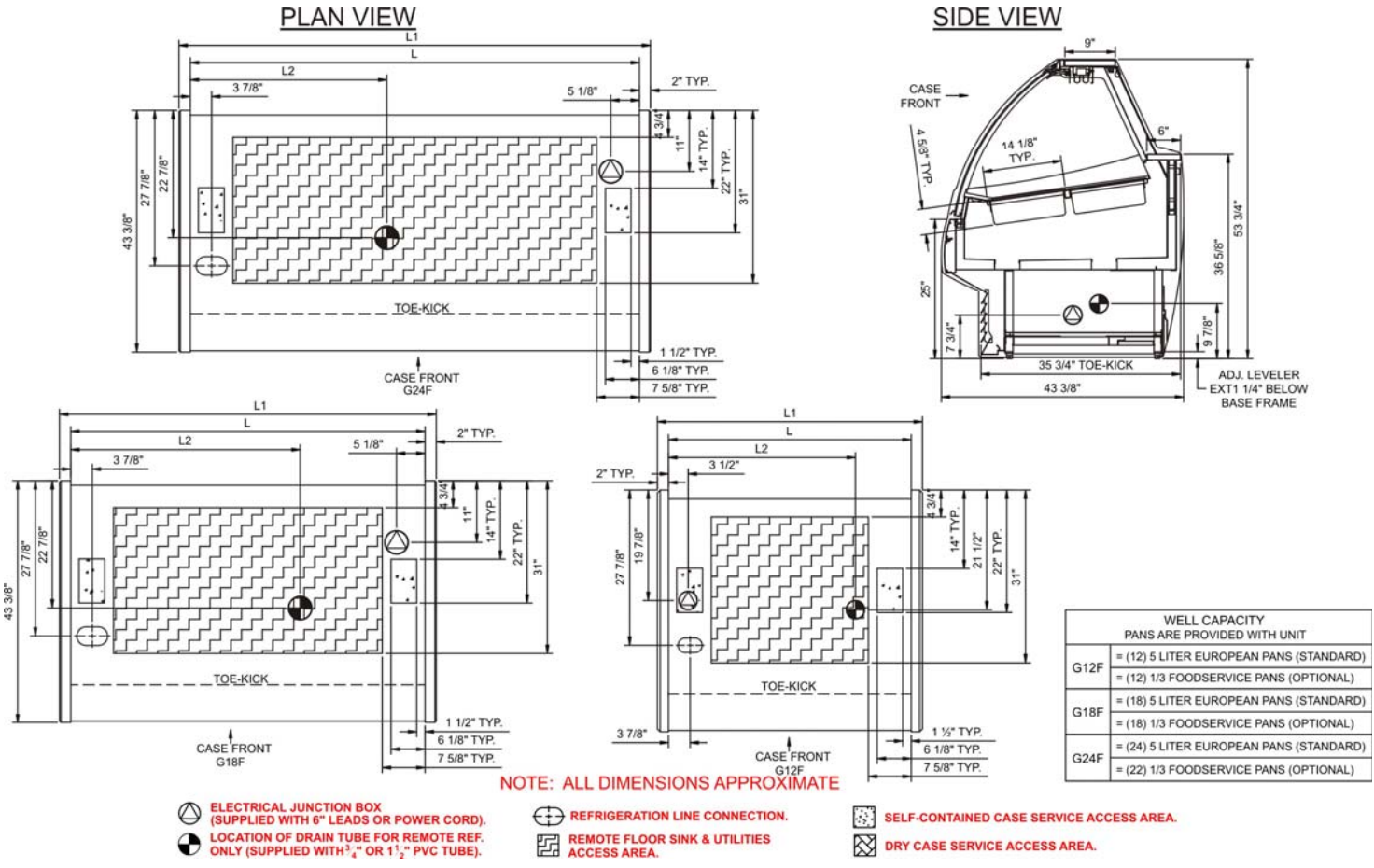
STANDARD FEATURES

- Breeze™ w/ EnergyWise s/c refrigeration (w/o evap pan) - Floor drain req'd
- Compressor air rear intake, front discharge. Toe kick cannot be blocked
- Curved double pane, lift-up front glass w/o lock
- High gloss painted exterior (specify color)
- Integrated average product temperature of -2°F
- Levelers
- One year parts & labor; 5 year compressor warranty
- Sign Channel two rows
- Stainless rear ledge
- Stainless steel Interior
- T-8 top lights

Features	Standard	Options
TRIM COLOR	<input type="checkbox"/> Black	<input type="checkbox"/> Silver
END PANEL LEFT	<input type="checkbox"/> Full end panel w/mirror interior	<input type="checkbox"/> Cutaway with glass
END PANEL RIGHT	<input type="checkbox"/> Full end panel w/mirror interior	<input type="checkbox"/> Cutaway with glass
UPPER REAR	<input type="checkbox"/> Open	<input type="checkbox"/> Clear glass rear sliding doors w/o lock <input type="checkbox"/> Night curtain, retractable, non-locking
PANS	<input type="checkbox"/> 5 Liter stainless steel gelato pans	<input type="checkbox"/> Stainless steel 1/3 foodservice pans
ELECTRICAL CONNECT	<input type="checkbox"/> 6' straight blade power cord (self cont.)	<input type="checkbox"/> 6' locking power cord (self cont.) <input type="checkbox"/> Electrical leads (remote)
REFRIGERATION	<input type="checkbox"/> Breeze™ w/ EnergyWise s/c refrigeration (w/o evap pan) - Floor drain req'd	<input type="checkbox"/> Breeze™ w/ EnergyWise s/c refrigeration (w/ evap pan)
MISCELLANEOUS		<input type="checkbox"/> Second year parts & labor warranty (excludes compressor)
ACCESSORIES		<input type="checkbox"/> Dipwell, 10" (Floor drain required) <input type="checkbox"/> 1Extra set 5-Liter stainless gelato pans (12) <input type="checkbox"/> 2Extra set 5-Liter stainless gelato pans (18) <input type="checkbox"/> 3Extra set 5-Liter stainless gelato pans (24) <input type="checkbox"/> 4Extra set Stainless 1/3 foodservice pans (12) <input type="checkbox"/> 5Extra set Stainless 1/3 foodservice pans (18) <input type="checkbox"/> 6Extra set Stainless 1/3 foodservice pans (22)

Option Notes: 1 - G12F
 2 - G18F
 3 - G24F
 4 - G12F
 5 - G18F
 6 - G24F

Intended Environment: Type I - Designed to operate in ambient conditions of 75°F with 55% relative humidity unless noted otherwise in system information below.	
Zone	Intended Product To Be Displayed
All	Packaged frozen products
Integrated Prod Temp ° F	
-2	



Model Technical Specifications																
Model	L"	L1"	L2"	System Circuit Volts			Phs	Freq	Amps ***	Watts	Wires	NEMA Plug	SST	BTUH	Ship Wt	Frt Cls
G12F	N/A	47.75	33.50	Remote(Type I)	Circuit #1	110/230V	1	60	12.00	2,602	3+G	Leads Multiple	-20.0	2,400	1,150	110
				Self-Contained	Circuit #1	110/230V	1	60	11.80	2,014	3+G	14-20P or L14-20P	N/A	N/A		
G18F	N/A	67.75	41.13	Remote(Type I)	Circuit #1	110/230V	1	60	20.90	4,173	3+G	Leads Multiple	-20.0	3,600	1,350	110
				Self-Contained	Circuit #1	110/230V	1	60	14.50	2,344	3+G	14-20P or L14-20P	N/A	N/A		
G24F	N/A	84.75	35.25	Remote(Type I)	Circuit #1	110/230V	1	60	14.90	2,870	3+G	Leads Multiple	-20.0	4,500	1,550	110
				Self-Contained	Circuit #1	110/230V	1	60	15.60	2,553	3+G	14-20P or L14-20P	N/A	N/A		

*** Does not include electric defrost on freezer models.

Regulatory Approvals:	
All Models	Accordance with AHRI Std 1200 ETL Listed to UL 471 ETL Listed to CAN/CSA 22.2 No. 120 ETL Sanitation to NSF 7

Important Notes:

- 1) ELECTRICAL NOTE: If GFCI is required, a GFCI breaker MUST be used in lieu of a GFCI receptacle
- 2) Unit requires a weekly manual defrost
- 3) Remote refrigeration requires customer to have existing hot gas defrost system. Contact factory for hot gas defrost system specifications required to support these models.
- 4) 45 3/8" minimum door entry clearance required (without shipping skid).

