

## Product Specifications

### Combination Cold Service Above Cold Self-Service Case 13" Dome



MODEL SHOWN: GCD656R

- Lengths include end panels
- GCD456R 51"L x 51-7/8"D x 55-3/8"H
  - GCD656R 75-3/8"L x 51-7/8"D x 55-3/8"H
  - GCD856R 99-3/4"L x 51-7/8"D x 55-3/8"H

#### STANDARD FEATURES

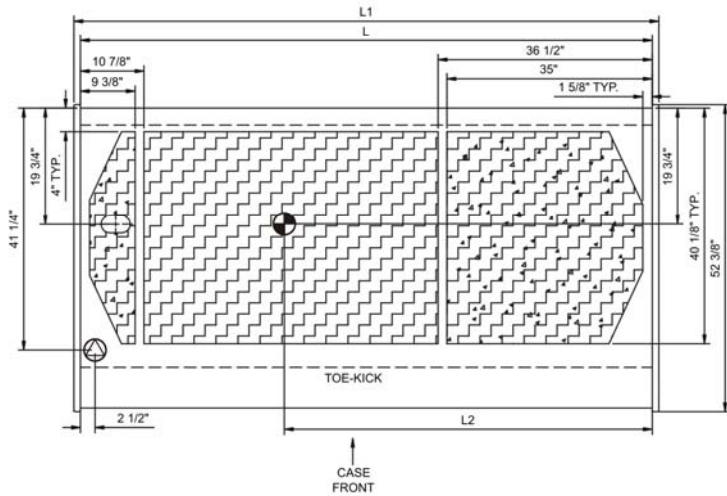
- Breeze™ w/EnergyWise s/c refrigeration
- Compressor air intake from rear and out front panel at toe kick. Front panel cannot be blocked.
- Integrated average product temperature of 40°F or less
- One year parts & labor; 5 year compressor warranty
- Shelving removable and adjustable on 1" centers
- Stainless steel rear exterior
- T-8 top light

Features	Standard	Options
<b>EXTERIOR COLOR</b>	<input type="checkbox"/> Laminated (non-premium) Confirm pattern/grain direction	<input type="checkbox"/> Laminated (premium) Confirm pattern/grain direction <input type="checkbox"/> Stainless steel
<b>INTERIOR COLOR</b>	<input type="checkbox"/> Black	<input type="checkbox"/> Stainless steel <input type="checkbox"/> White
<b>LOWER FRONT PANEL COLOR</b>	<input type="checkbox"/> Painted - Black	<input type="checkbox"/> Stainless steel
<b>TRIM COLOR</b>	<input type="checkbox"/> Black	<input type="checkbox"/> Silver
<b>BASE</b>	<input type="checkbox"/> Casters w/ levelers (n/a w/ remote ref.)	<input type="checkbox"/> 6"H legs
<b>END PANEL LEFT</b>	<input type="checkbox"/> Cutaway with glass	<input type="checkbox"/> No end panel (for same case to case connections)
<b>END PANEL RIGHT</b>	<input type="checkbox"/> Cutaway with glass	<input type="checkbox"/> No end panel (for same case to case connections)
<b>FRONT GLASS</b>	<input type="checkbox"/> Curved single pane, lift-up front glass w/o lock	<input type="checkbox"/> Flat angled single pane, lift-up front glass w/o lock
<b>REAR STORAGE</b>	<input type="checkbox"/> Dry storage w/ sliding solid doors	<input type="checkbox"/> Refrigerated storage w/sliding solid doors
<b>UPPER REAR</b>	<input type="checkbox"/> Clear glass rear sliding doors w/o lock	<input type="checkbox"/> Reflective glass rear sliding doors w/o lock
<b>ELECTRICAL CONNECT</b>	<input type="checkbox"/> 6' straight blade power cord (self cont.)	<input type="checkbox"/> 6' locking power cord (self cont.) <input type="checkbox"/> Electrical leads (remote)
<b>REFRIGERATION</b>	<input type="checkbox"/> Breeze™ w/EnergyWise s/c refrigeration	<input type="checkbox"/> NOTE: Remote only available w/rail base w/shims. N/A w/ levelers, casters or legs. <input type="checkbox"/> Note: Remote doesn't incl Conds unit. Floor drain reqd. <input type="checkbox"/> Remote w/thermostat, solenoid & TXV
<b>MISCELLANEOUS</b>		<input type="checkbox"/> Front glass lock <input type="checkbox"/> Rear door lock <input type="checkbox"/> Scale stand w/receptacle (requires separate circuit) <input type="checkbox"/> Second year parts & labor warranty (excludes compressor)
<b>ACCESSORIES</b>		<input type="checkbox"/> Clean Sweep® coil cleaner (n/a w/remote) <input type="checkbox"/> Night curtain, retractable, non-locking <input type="checkbox"/> Rear wrapping board <input type="checkbox"/> Removable wire security cover, locking

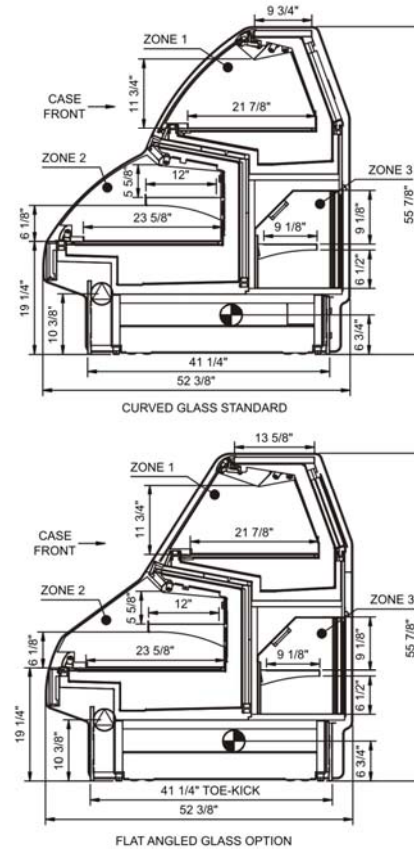
## Product Specifications

<b>Intended Environment:</b> Type I - Designed to operate in ambient conditions of 75°F with 55% relative humidity unless noted otherwise in system information below.	
<b>Zone</b>	<b>Integrated Prod Temp ° F</b>
All	40

**PLAN VIEW**



**SIDE VIEW**



**NOTE: ALL DIMENSIONS APPROXIMATE**

- ELECTRICAL JUNCTION BOX (SUPPLIED WITH 6" LEADS OR POWER CORD).
- REMOTE FLOOR SINK & UTILITIES ACCESS AREA.
- LOCATION OF DRAIN TUBE FOR REMOTE REF. ONLY (SUPPLIED WITH 3/4" OR 1 1/2" PVC TUBE).
- SELF-CONTAINED CASE SERVICE ACCESS AREA.
- REFRIGERATION LINE CONNECTION.
- DRY CASE SERVICE ACCESS AREA.

**Model Technical Specifications**

Model	L1"	L2"	System Circuit Volts		Phs	Freq	Amps ***	Wires	NEMA Plug	BTUH	Ship Wt	Fr t Cts	
GCD456R	51.00	0	Self-Contained	Circuit 1	120	1	60	21.73	2+G	5-30P	N/A	950	110
			Remote	Circuit 2	120	1	60	3.31	2+G	Leads	4,226		
GCD656R	75 3/8	0	Self-Contained	Circuit 1	120/220	1	60	15.85	3+G	14-20P	N/A	1,350	110
			Remote	Circuit 2	120	1	60	2.12	2+G	Leads	6,116		
GCD856R	99 3/4	0	Self-Contained	Circuit 1	120/220	1	60	17.15	3+G	14-30P	N/A	1,950	110
			Remote	Circuit 2	120	1	60	6.32	2+G	Leads	7,100		

\*\*\* Does not include electric defrost on freezer models.

Regulatory Approvals:	
All Models	Accordance with AHRI Std 1200 ETL Listed to UL 471 ETL Listed to CAN/CSA 22.2 No. 120 ETL Sanitation to NSF 7

**Important Notes:**

- 1) ELECTRICAL NOTE: If GFCI is required, a GFCI breaker MUST be used in lieu of a GFCI receptacle
- 2) 54" minimum door entry clearance required (without shipping skid).
- 3) Units are supplied with levelers. They must be adjusted during installation to ensure the unit is level and plumb. Dimensions reflect levelers extended 1 1/4".

