

Refrigerated Service Case w/ Gravity Coil & Platter Coil

Lengths include 1-1/8" end panels

- ☐ GMG4 51"L x 42-3/4"D x 51-1/4"H
- ☐ GMG5 62-7/8"L x 42-3/4"D x 51-1/4"H
- ☐ GMG6 75-3/8"L x 42-3/4"D x 51-1/4"H
- ☐ GMG8 99-3/4"L x 42-3/4"D x 51-1/4"H



MODEL SHOWN: GMG4

NOTE: SHOWN W/ OPTIONAL CUTAWAY END PANEL

STANDARD FEATURES

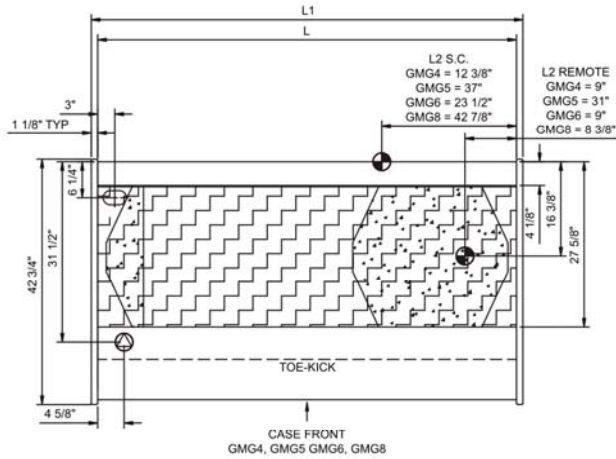
- Breeze™ w/EnergyWise s/c refrigeration
- Compressor air intake from rear and out front panel at toe kick. Front panel cannot be blocked.
- Integrated average product temperature of 38°F or less
- One year parts & labor; 5 year compressor warranty
- Stainless steel interior
- Stainless steel rear exterior
- T-8 top light

Features	Standard	Options
EXTERIOR COLOR	<input type="checkbox"/> Laminated (non-premium) Confirm pattern/grain direction	<input type="checkbox"/> Laminated (premium) Confirm pattern/grain direction <input type="checkbox"/> Stainless steel
LOWER FRONT PANEL COLOR	<input type="checkbox"/> Painted - Black	<input type="checkbox"/> Stainless steel
TRIM COLOR	<input type="checkbox"/> Black	<input type="checkbox"/> Silver
BASE	<input type="checkbox"/> Casters w/ levelers (n/a w/ remote ref.)	<input type="checkbox"/> 6"H legs
END PANEL LEFT	<input type="checkbox"/> Full end panel w/mirror interior	<input type="checkbox"/> Cutaway with glass
END PANEL RIGHT	<input type="checkbox"/> Full end panel w/mirror interior	<input type="checkbox"/> Cutaway with glass
FRONT GLASS	<input type="checkbox"/> Curved single pane, lift-up front glass w/o lock	<input type="checkbox"/> Flat angled single pane, lift-up front glass w/o lock
UPPER REAR	<input type="checkbox"/> Clear glass rear sliding doors w/o lock	<input type="checkbox"/> Reflective glass rear sliding doors w/o lock
ELECTRICAL CONNECT	<input type="checkbox"/> 6' straight blade power cord (self-cont.)	<input type="checkbox"/> 6' locking power cord (self-cont.) <input type="checkbox"/> Electrical leads (remote)
REFRIGERATION	<input type="checkbox"/> Breeze™ w/EnergyWise s/c refrigeration	<input type="checkbox"/> NOTE: Remote only available w/rail base w/shims. N/A w/ levelers, casters or legs. <input type="checkbox"/> Note: Remote doesn't incl Conds unit. Floor drain reqd. <input type="checkbox"/> Remote w/thermostat, solenoid & TXV
MISCELLANEOUS		<input type="checkbox"/> Front glass lock <input type="checkbox"/> Ice pans for seafood application, requires floor drain <input type="checkbox"/> Rear door lock <input type="checkbox"/> Scale stand w/receptacle (requires separate circuit) <input type="checkbox"/> Second year parts & labor warranty (excludes compressor)
ACCESSORIES		<input type="checkbox"/> Clean Sweep® coil cleaner (n/a w/remote) <input type="checkbox"/> Rear wrapping board

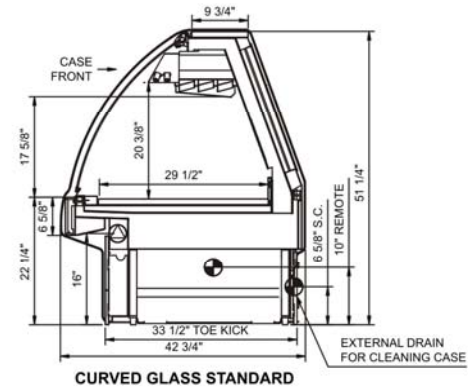
Product Specifications

Intended Environment: Type I - Designed to operate in ambient conditions of 75°F with 55% relative humidity unless noted otherwise in system information below.		
Zone	Intended Product To Be Displayed	Integrated Prod Temp ° F
All	Unpackaged refrigerated products	38

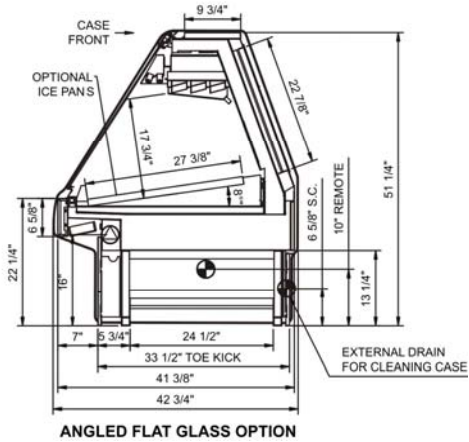
PLAN VIEW



SIDE VIEW



CURVED GLASS STANDARD



ANGLED FLAT GLASS OPTION

NOTE: ALL DIMENSIONS APPROXIMATE

- ELECTRICAL JUNCTION BOX (SUPPLIED WITH 6\"/>

Model Technical Specifications																
Model	L"	L1"	L2"	System Circuit Volts			Phs	Freq	Amps ***	Watts	Wires	NEMA Plug	SST	BTUH	Ship Wt	Frt Cls
GMG4	48.75	51.00	.00	Remote(Type I)	Circuit #1	110-120	1	60	1.23	124	2+G	Leads Multiple	18.00	1,600	950	110
				Self-Contained	Circuit #1	110-120	1	60	11.69	1,127	2+G	5-20P or L5-20P	N/A	N/A		
GMG5	60.63	62.88	.00	Remote(Type I)	Circuit #1	110-120	1	60	1.46	160	2+G	Leads Multiple	18.00	2,360	N/A	110
				Self-Contained	Circuit #1	110-120	1	60	11.62	1,151	2+G	5-20P or L5-20P	N/A	N/A		
GMG6	73.13	75.38	.00	Remote(Type I)	Circuit #1	110-120	1	60	1.46	160	2+G	Leads Multiple	18.00	2,360	1,150	110
				Self-Contained	Circuit #1	110-120	1	60	11.92	1,163	2+G	5-20P or L5-20P	N/A	N/A		
GMG8	97.50	99.75	.00	Remote(Type I)	Circuit #1	110-120	1	60	1.69	188	2+G	Leads Multiple	18.00	3,150	1,450	110
				Self-Contained	Circuit #1	110-120	1	60	13.75	1,303	2+G	5-20P or L5-20P	N/A	N/A		

*** Does not include electric defrost on freezer models.

Regulatory Approvals:	
All Models	Accordance with AHRI Std 1200 ETL Listed to UL 471 ETL Listed to CAN/CSA 22.2 No. 120 ETL Sanitation to NSF 7

Important Notes:

- ELECTRICAL NOTE: If GFCI is required, a GFCI breaker MUST be used in lieu of a GFCI receptacle
- Units are supplied with levelers. They must be adjusted during installation to ensure the unit is level and plumb. Dimensions reflect levelers extended 1 1/4"



In Accordance with
AHRI Std 1200

DOE 2012
Energy Efficiency
Compliant