

Combination Convertible Service Above Refrigerated Self-Service Case - 50 HZ Electrical



MODEL SHOWN: HOU4852RZ

<input type="checkbox"/> HOU3852RZ	40"L x 42"D x 53"H
<input type="checkbox"/> HOU4852RZ	50"L x 42"D x 53"H
<input type="checkbox"/> HOU5652RZ	58"L x 42"D x 53"H
<input type="checkbox"/> HOU7452RZ	76"L x 42"D x 53"H

STANDARD FEATURES

- Light-T-8 top & shelf light(s)
- Evaporator pan-Condensate pan (self-contained refrig. only)
- Compressor air-Compressor air rear intake, front discharge. Toe kick cannot be blocked
- Upper display-3ft models do not include center divider in upper display
- Upper display-Convertible baffle in upper display
- Warranty-One year parts & labor; 1-5 year compressor warranty
- Temp-Integrated average product temperature of 41°F or less.
- Ends-Full end panel w/mirror interior
- Shelves-Shelving removable and adjustable on 1" centers

	STANDARD SPECIFICATION	OPTION(s)
ELECTRICAL CONNECT	<input type="checkbox"/> Electrical leads (self-cont.)	<input type="checkbox"/> Electrical leads (remote)
LOWER DISPLAY	<input type="checkbox"/> Single display deck	<input type="checkbox"/> 2"H Display steps (n/a w/shelf) <input type="checkbox"/> 4"H Display steps (n/a w/shelf) <input type="checkbox"/> Clear glass shelf, lighted <input type="checkbox"/> 2"H Full depth display riser(s) (n/a w/shelf) <input type="checkbox"/> 4"H Full depth display risers (n/a w/shelf)
REAR EXTERIOR COLOR	<input type="checkbox"/> White exterior	<input type="checkbox"/> Stainless steel rear exterior (w/stainless ext. only) <input type="checkbox"/> Black exterior
UPPER DISPLAY	<input type="checkbox"/> Clear glass shelf, lighted	
INTERIOR COLOR	<input type="checkbox"/> Black interior	<input type="checkbox"/> White interior <input type="checkbox"/> Stainless Steel interior
TRIM COLOR	<input type="checkbox"/> Black trim	<input type="checkbox"/> Silver trim
EXTERIOR COLOR	<input type="checkbox"/> Laminated (non-premium) Confirm pattern/grain direction	<input type="checkbox"/> Laminated (premium) Confirm pattern/grain direction <input type="checkbox"/> Stainless steel exterior
COVER/CURTAIN	<input type="checkbox"/> None	<input type="checkbox"/> Wire security cover, removable, locking <input type="checkbox"/> Night curtain, retractable, non-locking
REFRIGERATION	<input type="checkbox"/> Breeze™ s/c refrigeration	<input type="checkbox"/> Note: Remote doesn't incl Conds unit. Floor drain reqd. <input type="checkbox"/> Remote w/thermostat, solenoid & TXV <input type="checkbox"/> Remote DX refrigeration
BASE SUPPORT	<input type="checkbox"/> Levelers	<input type="checkbox"/> 6"H legs <input type="checkbox"/> Casters (n/a with remote)
FRONT PANEL	<input type="checkbox"/> Flat front panel	
REAR DOORS	<input type="checkbox"/> Clear glass rear sliding doors w/o lock	<input type="checkbox"/> Reflective glass rear sliding doors w/lock <input type="checkbox"/> Clear glass rear sliding doors w/lock <input type="checkbox"/> Reflective glass rear sliding doors w/o lock
REAR WRAPPING BOARD	<input type="checkbox"/> None	<input type="checkbox"/> Rear wrapping board
FRONT GLASS	<input type="checkbox"/> Curved double pane, lift-up front glass w/o lock	
BUMPER	<input type="checkbox"/> None	<input type="checkbox"/> 1" bumper on front (specify color)

ENCORE®

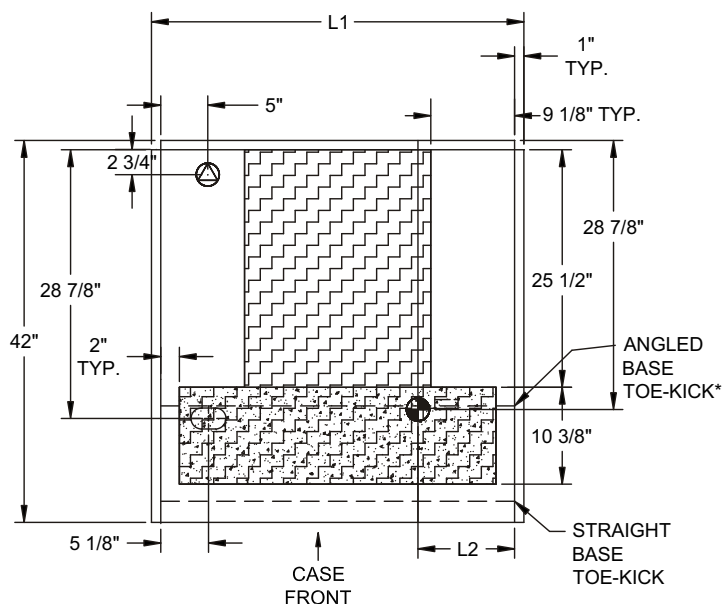
PRODUCT SPECIFICATIONS

Intended Use of Display Area: Packaged/unpackaged refrigerated products

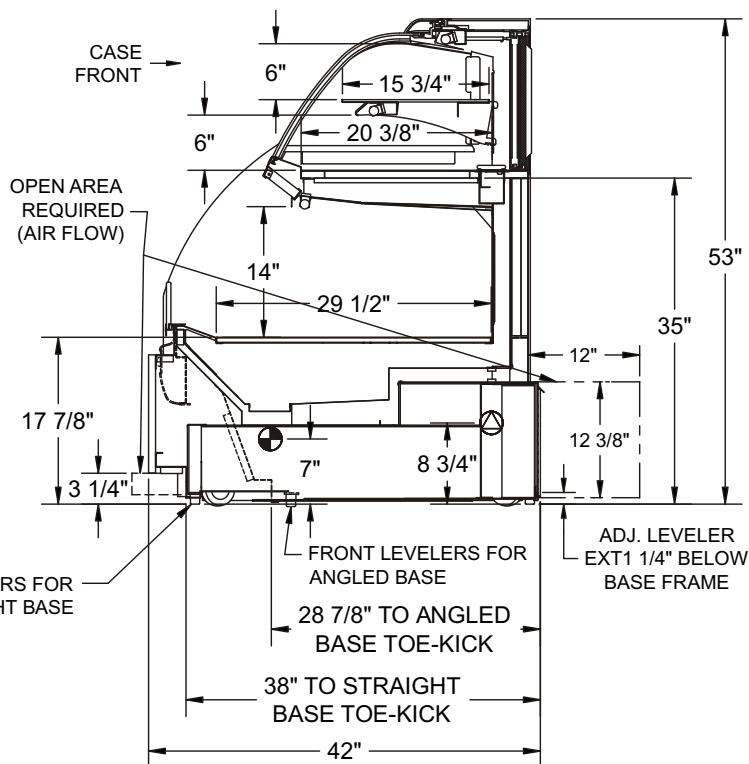
Integrated Product Temperature (IPT): 41°F

Intended Environment: Designed to operate in ambient conditions of 75°F / 55% relative humidity.

PLAN VIEW



SIDE VIEW



*FOR ANGLED BASE CASES, SERVICE ACCESS AREAS END AT TOE-KICK

NOTE: ALL DIMENSIONS APPROXIMATE

- ELECTRICAL JUNCTION BOX (SUPPLIED WITH 6" LEADS OR POWER CORD).
- LOCATION OF CONDENSATE DRAIN TUBE (SUPPLIED WITH 3/4" OR 1 1/2" PVC DRAIN TUBE).
- REFRIGERATION LINE CONNECTION.
- REMOTE CASE SERVICE ACCESS AREA.
- SELF-CONTAINED CASE SERVICE ACCESS AREA.
- DRY CASE SERVICE ACCESS AREA.

	Self-Contained Refrigeration/Dry					Remote Refrigeration w/Leads				
Model	L1*	L2*	Volts++	Amps	NEMA Plug	Volts++	Amps***	BTUH	Ship Wt	Frts Cts
HOU3852RZ	40	10 3/8	220/1/50	9.645	Leads	220/1/50	1.02	2948	950	110
HOU4852RZ	50	10 3/8	220/1/50	12.64	Leads	220/1/50	1.32	3431	1050	110
HOU5652RZ	58	10 3/8	220/1/50	13.65	Leads	220/1/50	1.15	3817	1060	110
HOU7452RZ	76	10 3/8	220/1/50	15.47	Leads	220/1/50	1.67	4686	1220	110

++ Operating range for 120 volt rating is 110-120 volts; operating range for 220 volt rating is 208-230 volts.

** Requires 3 wires + ground

*** Does not include electric defrost on freezer models

REGULATORY APPROVALS

- ETL Listed Certified to CAN/CSA 22.2
- ETL Listed Conforms to UL 471
- ETL Sanitation Conforms to NSF 7

Important Note:

43" Minimum door entry clearance required (without shipping skid).

Important Note:

Compressor air intake from rear and out front panel at toe kick. Toe kick cannot be blocked.

Important Note:

Units are supplied with levelers. They must be adjusted during installation to ensure the unit is level and plumb. Dimensions reflect levelers extended 1 1/4".