

Non-Refrigerated Service Case - 50 HZ Electrical

<input type="checkbox"/> HV38Z	40"L x 42"D x 51 1/4"H
<input type="checkbox"/> HV48Z	50"L x 42"D x 51 1/4"H
<input type="checkbox"/> HV56Z	58"L x 42"D x 51 1/4"H
<input type="checkbox"/> HV74Z	76"L x 42"D x 51 1/4"H

STANDARD FEATURES

- Light-T-8 top & shelf light(s)
- Warranty-One year parts & labor warranty
- Shelves-Shelving removable and adjustable on 1" centers
- Upper front-Curved single pane, lift-up front glass w/o lock



MODEL SHOWN: HV56Z

	STANDARD SPECIFICATION	OPTION(s)
ELECTRICAL CONNECT	<input type="checkbox"/> Electrical leads (self-cont.)	<input type="checkbox"/> Electrical leads (remote)
REAR EXTERIOR COLOR	<input type="checkbox"/> White exterior	<input type="checkbox"/> Black exterior <input type="checkbox"/> Stainless steel exterior (self cont. only)
INTERIOR COLOR	<input type="checkbox"/> Black interior	<input type="checkbox"/> White interior <input type="checkbox"/> Stainless Steel interior
TRIM COLOR	<input type="checkbox"/> Black trim	<input type="checkbox"/> Silver trim
EXTERIOR COLOR	<input type="checkbox"/> Laminated (non-premium) Confirm pattern/grain direction	<input type="checkbox"/> Laminated (premium) Confirm pattern/grain direction <input type="checkbox"/> Stainless steel exterior
BASE SUPPORT	<input type="checkbox"/> Levelers	<input type="checkbox"/> 6"H legs <input type="checkbox"/> Casters (n/a with remote)
FRONT PANEL	<input type="checkbox"/> Flat front panel	
END PANEL LEFT	<input type="checkbox"/> Full end panel w/mirror interior	<input type="checkbox"/> Filler end panel (specify adjacent case) <input type="checkbox"/> Case to case glass end <input type="checkbox"/> Cutaway end panel <input type="checkbox"/> No end panel (for same case to case connections)
END PANEL RIGHT	<input type="checkbox"/> Full end panel w/mirror interior	<input type="checkbox"/> Filler end panel (specify adjacent case) <input type="checkbox"/> Case to case glass end <input type="checkbox"/> Cutaway end panel <input type="checkbox"/> No end panel (for same case to case connections)
FRONT GLASS	<input type="checkbox"/> Curved single pane, lift-up front glass w/o lock	<input type="checkbox"/> Curved single pane, lift-up front glass w/lock
UPPER REAR	<input type="checkbox"/> Clear glass rear sliding doors w/o lock	<input type="checkbox"/> Reflective glass rear sliding doors w/lock <input type="checkbox"/> Clear glass rear sliding doors w/lock <input type="checkbox"/> Reflective glass rear sliding doors w/o lock
SHELVING	<input type="checkbox"/> Wire rack(s), lighted (T-8)	<input type="checkbox"/> Clear glass shelves, lighted
BUMPER	<input type="checkbox"/> None	<input type="checkbox"/> 1" bumper on front (specify color)

ENCORE®

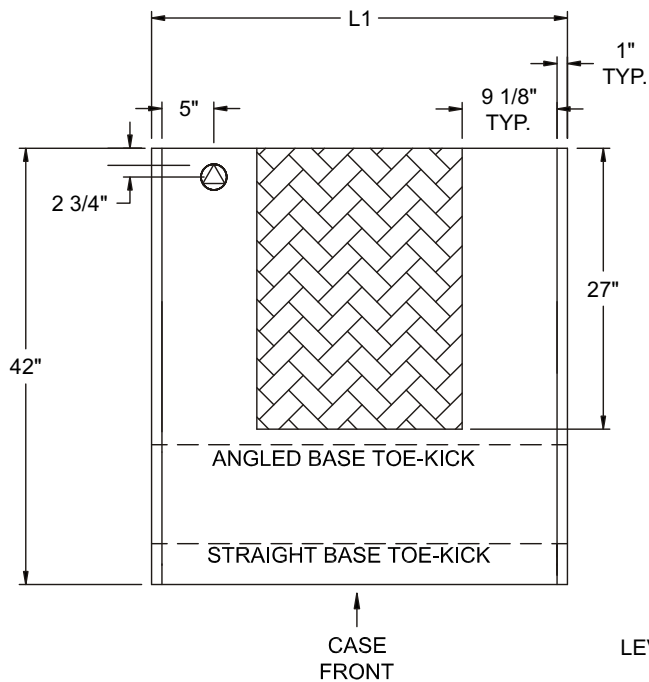
PRODUCT SPECIFICATIONS

Intended Use of Display Area: Unpackaged non-refrigerated products

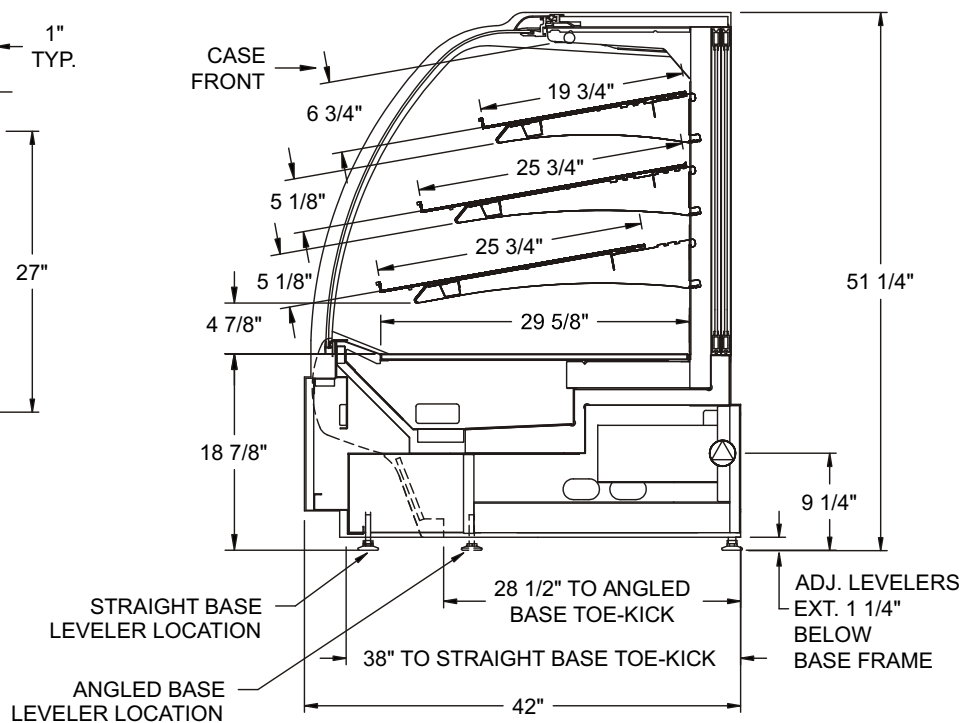
Integrated Product Temperature (IPT): Ambient°F

Intended Environment: Designed to operate in ambient conditions of 75°F / 55% relative humidity.

PLAN VIEW



SIDE VIEW



NOTE: ALL DIMENSIONS APPROXIMATE

- ELECTRICAL JUNCTION BOX (SUPPLIED WITH 6" LEADS OR POWER CORD).
- LOCATION OF CONDENSATE DRAIN TUBE (SUPPLIED WITH 3/4" OR 1 1/2" PVC DRAIN TUBE).
- REFRIGERATION LINE CONNECTION.
- REMOTE CASE SERVICE ACCESS AREA.
- SELF-CONTAINED CASE SERVICE ACCESS AREA.
- DRY CASE SERVICE ACCESS AREA.

	Self-Contained Refrigeration/Dry					Remote Refrigeration w/Leads				
Model	L1*	L2*	Volts++	Amps	NEMA Plug	Volts++	Amps***	BTUH	Ship Wt	Frt Cls
HV38Z	40	0	220/1/50	0.43	Leads	N/A	N/A	N/A	700	125
HV48Z	50	0	220/1/50	0.43	Leads	N/A	N/A	N/A	880	125
HV56Z	58	0	220/1/50	0.43	Leads	N/A	N/A	N/A	900	125
HV74Z	76	0	220/1/50	0.64	Leads	N/A	N/A	N/A	980	125

++ Operating range for 120 volt rating is 110-120 volts; operating range for 220 volt rating is 208-230 volts.

** Requires 3 wires + ground

*** Does not include electric defrost on freezer models

REGULATORY APPROVALS

- ETL Listed Conforms to UL 65
- ETL Sanitation Conforms to NSF 2

Important Note:

42" Minimum door entry clearance required (Without shipping skid).

Important Note:

Units are supplied with levelers. They must be adjusted during installation to ensure the unit is level and plumb. Dimensions reflect levelers extended 1 1/4".