

Non-Refrigerated Acrylic Door Case

Lengths include 0-3/4" end panels

- HVAD38SS 39-1/2"L x 41"D x 51-1/4"H
- HVAD48SS 49-1/2"L x 41"D x 51-1/4"H
- HVAD56SS 57-1/2"L x 41"D x 51-1/4"H
- HVAD74SS 75-1/2"L x 41"D x 51-1/4"H



MODEL HVAD56SS

NOTE: TRAYS NOT SUPPLIED WITH UNIT - HVAD38SS HOLDS (6) 18X26 TRAYS, HVAD48SS (6), HVAD56SS (9), HVAD74SS (12)

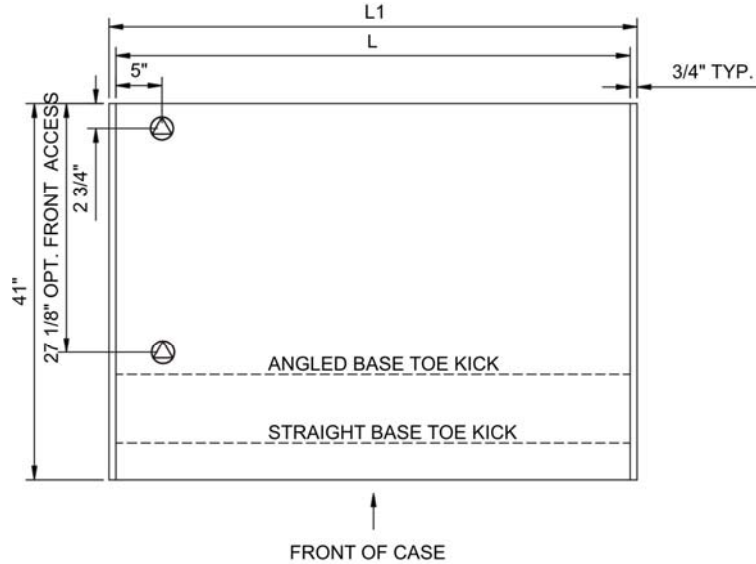
STANDARD FEATURES

- 12" power cord
- Flat front panel
- One year parts & labor warranty
- Shelving removable and adjustable on 1" centers
- Tissue box holder

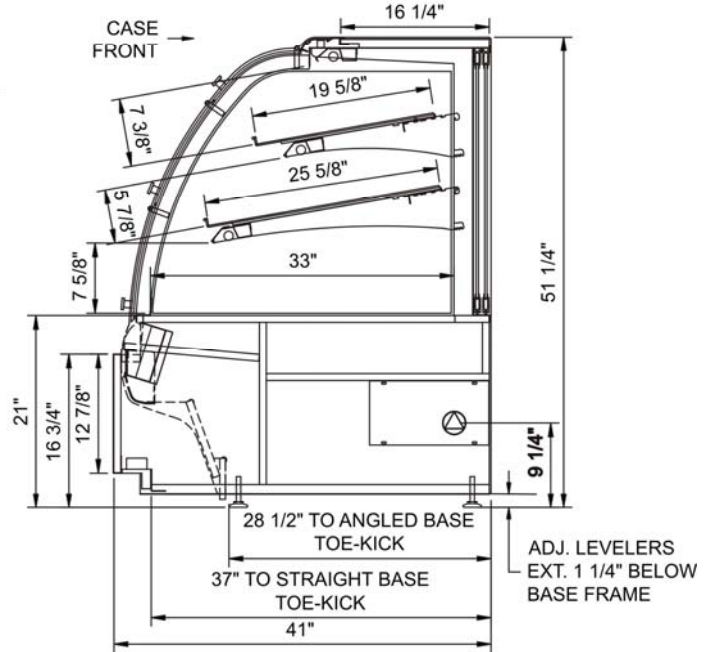
Features	Standard	Options
EXTERIOR COLOR	<input type="checkbox"/> Laminated (non-premium) Confirm pattern/grain direction	<input type="checkbox"/> Laminated (premium) Confirm pattern/grain direction
INTERIOR COLOR	<input type="checkbox"/> Black	<input type="checkbox"/> White
REAR EXTERIOR COLOR	<input type="checkbox"/> Black	<input type="checkbox"/> White
TRIM COLOR	<input type="checkbox"/> Black	<input type="checkbox"/> Silver
BASE	<input type="checkbox"/> Levelers	<input type="checkbox"/> Casters
END PANELS	<input type="checkbox"/> Full with mirror	<input type="checkbox"/> No end panel (for same case to case connections)
FRONT DOORS	<input type="checkbox"/> Acrylic lift-up front doors (free fall)	<input type="checkbox"/> Acrylic lift-up front doors (slow close hinges)
UPPER REAR	<input type="checkbox"/> Clear glass rear sliding doors w/o lock	<input type="checkbox"/> Reflective glass rear sliding doors w/o lock <input type="checkbox"/> Solid back panel
SHELVING	<input type="checkbox"/> Wire rack shelf(s), lighted (T-8)	<input type="checkbox"/> Acrylic bins with dividers <input type="checkbox"/> Acrylic bins without dividers
LIGHTS	<input type="checkbox"/> T-8 top & shelf lights	<input type="checkbox"/> LED top & shelf lights
MISCELLANEOUS		<input type="checkbox"/> Seal between doors <input type="checkbox"/> Second year parts & labor warranty <input type="checkbox"/> Trash bin

Intended Environment: Type I - Designed to operate in ambient conditions of 75°F with 55% relative humidity unless noted otherwise in system information below.	
Zone	Integrated Prod Temp ° F
All	Ambient

PLAN VIEW



SIDE VIEW



NOTE: ALL DIMENSIONS APPROXIMATE

- ELECTRICAL JUNCTION BOX (SUPPLIED WITH 6" LEADS OR POWER CORD).
- LOCATION OF DRAIN TUBE FOR REMOTE REF. ONLY (SUPPLIED WITH 3/4" OR 1 1/2" PVC TUBE).

- REFRIGERATION LINE CONNECTION.
- REMOTE FLOOR SINK & UTILITIES ACCESS AREA.

- SELF-CONTAINED CASE SERVICE ACCESS AREA.
- DRY CASE SERVICE ACCESS AREA.

Model Technical Specifications

Model	L"	L1"	L2"	System	Circuit Volts	Phs	Freq	Amps ***	Watts	Wires	NEMA Plug	SST	BTUH	Ship Wt	Frts Cls
HVAD38SS	38.00	39.50	.00	Ambient	Circuit #1	110-120	1	60	0.40	51	2+G	N/A	N/A	650	125
HVAD48SS	48.00	49.50	.00	Ambient	Circuit #1	110-120	1	60	0.56	75	2+G	N/A	N/A	700	125
HVAD56SS	56.00	57.50	.00	Ambient	Circuit #1	110-120	1	60	0.74	96	2+G	N/A	N/A	800	125
HVAD74SS	74.00	75.50	.00	Ambient	Circuit #1	110-120	1	60	0.99	120	2+G	N/A	N/A	850	125

*** Does not include electric defrost on freezer models.

Important Notes:

- 1) 42" minimum door entry clearance required (without shipping skid).
- 2) Units are supplied with levelers which must be adjusted during installation to ensure the unit is level and plumb. Dimensions reflect levelers extended 1-1/4".

Regulatory Approvals:

All Models	ETL Listed to UL 65 ETL Sanitation to NSF 2
------------	--

