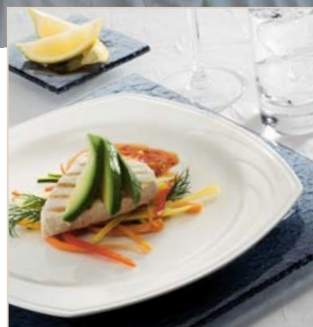




Discover the tall, clean lines of élan glassware.

élan dinnerware shown with Repetition flatware and Aficionado stemware.



élan Square Plate shown with World Tableware Smoke Glacier plates, Super Sham Beverage and Aficionado stemware.

New!

*Classic influence.
Vigorous new spirit.
The élan Collection—
thin, light, low profile.
Bright-white
Royal Rideau body.*



6 3/8" Plate
No. 905437 879
H 5/8
3 doz • 16#/1.4 cu ft

7 3/8" Plate
No. 905437 878
H 5/8
3 doz • 22#/1.7 cu ft

9 1/8" Plate
No. 905437 877
H 3/4
1 doz • 14#/1.4 cu ft

9 7/8" Plate
No. 905437 876
H 7/8
1 doz • 16#/1.4 cu ft

10 1/2" Plate
No. 905437 873
H 7/8
1 doz • 24#/1.5 cu ft

12 1/8" Plate
No. 905437 874
H 1
1 doz • 24#/1.6 cu ft



6 1/4" Square Plate
No. 905437 895
H 5/8
3 doz • 16#/1.5 cu ft

7 1/4" Square Plate
No. 905437 896
H 3/4
3 doz • 22#/1.7 cu ft

9" Square Plate
No. 905437 897
H 7/8
1 doz • 14#/1.5 cu ft

10 1/4" Square Plate
No. 905437 893
H 1
1 doz • 27#/1.5 cu ft



11 1/2" x 8 3/8" Platter
No. 905437 884
H 7/8
1 doz • 15#/1.6 cu ft

13 1/2" x 10 3/8" Platter
No. 905437 883
H 1 1/8
1 doz • 27#/1.8 cu ft



8 1/2 oz Tea Cup Tall
No. 905437 889
H 3 1/4 T 3 5/8 D 4 1/2
3 doz • 22#/1.1 cu ft
TRAEX TR-4 □



8 oz Tea Cup Low
No. 905437 888
H 2 1/2 T 3 7/8 D 4 3/4
3 doz • 20#/1.3 cu ft
TRAEX TR-4 □



9 oz Stacking Cup
No. 905437 887
H 2 3/4 T 3 5/8 D 4 3/8
3 doz • 22#/1.1 cu ft
TRAEX TR-4 □



8 1/2 oz Mug
No. 905437 891
H 3 3/4 T 3 D 4
3 doz • 25#/1.1 cu ft
TRAEX TR-4A □



5 3/4" Tea Saucer
No. 905437 886
H 5/8
3 doz • 16#/1.4 cu ft



3 1/2 oz Fruit Bowl
No. 905437 892
H 1 1/8 D 5
3 doz • 14#/1.5 cu ft



10 1/2 oz Grapefruit Bowl
No. 905437 882
H 1 7/8 D 6 1/2
3 doz • 26#/1.7 cu ft



14 oz Soup Rim Deep
No. 905437 881
H 1 3/8 D 9 1/8
1 doz • 12#/1.4 cu ft



20 oz Pasta Bowl
No. 905437 885
H 1 1/8 D 11 1/8
1 doz • 25#/1.6 cu ft

- Color indicates SYRACUSE SELECT Shipment within 30 days or less
- Color indicates HOSPITALITY EXPRESS Shipment within 36 hours
- Recommended Traex Cup Rack

H=Height, T=Top Diameter, D=Maximum Diameter (including handles)

The listed dimensions/capacities should not be used for plate cover or equipment specifications. See page 79.