



ADA Compliant

This Space for Architect/Engineer Approval

Job Name _____ Date _____
 Model Specified _____ Quantity _____
 Customer/Wholesaler _____
 Contractor _____
 Architect/Engineer _____

016739-40
 Swivel Gooseneck w/
 2.2 GPM [8.3 LPM] Aerator.
 Rigid Conversion Requires
 017421-45 Lock Washer
 (Included)



30" [762mm] Long
 Flexible Stainless
 Steel Hose Between
 Shank & Control
 Module

Removable
 Strainer

EC-HYDROGEN
 Hydro-Generator
 Power Supply
 (No Batteries or
 AC Adapter
 Needed to Supply
 Power to Faucet)

9 5/8"
 [244mm]

8 3/16"
 [208mm]

4 1/2"
 [115mm]

5 7/8"
 [150mm]

1 15/16"
 [49mm]

3/4"
 [19mm]

Maximum
 Thickness

Short EI

24" [610mm]
 Sensor Cable

3 5/8" x 4 3/16" x 2" Deep
 [92mm x 106mm x 51mm]
 Control Module Box (White) w/
 Water Resistant Connections.
 AC or DC Operated w/ (4)
 AA Batteries if Hydro Generator
 is Not Used.

5EF-TMV
 ASSE 1070
 Thermostatic
 Mixing Valve
 w/ Integral
 Check Valves

(2) 18" [457mm]
 Flexible Stainless
 Steel Supply Hoses.
 1/2" NPSM Female
 x 3/8" Compression
 Female

Rough-In Requirement:
 ϕ 1 1/8" [29mm] Mounting Hole

Model Number

5EF-1D-WGAT-THG

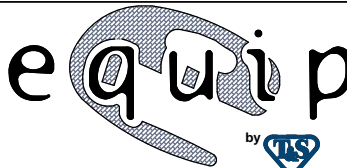
Product Specifications:

Electronic Faucet: Wall Mount Swivel Gooseneck, 2.2 GPM VR
 Aerator, AC-DC Control Module, Hydro-Generator, Thermostatic
 Mixing Valve w/ Integral Check Valves &
 (2) 18" Flexible Supply Hoses

Product Compliance:

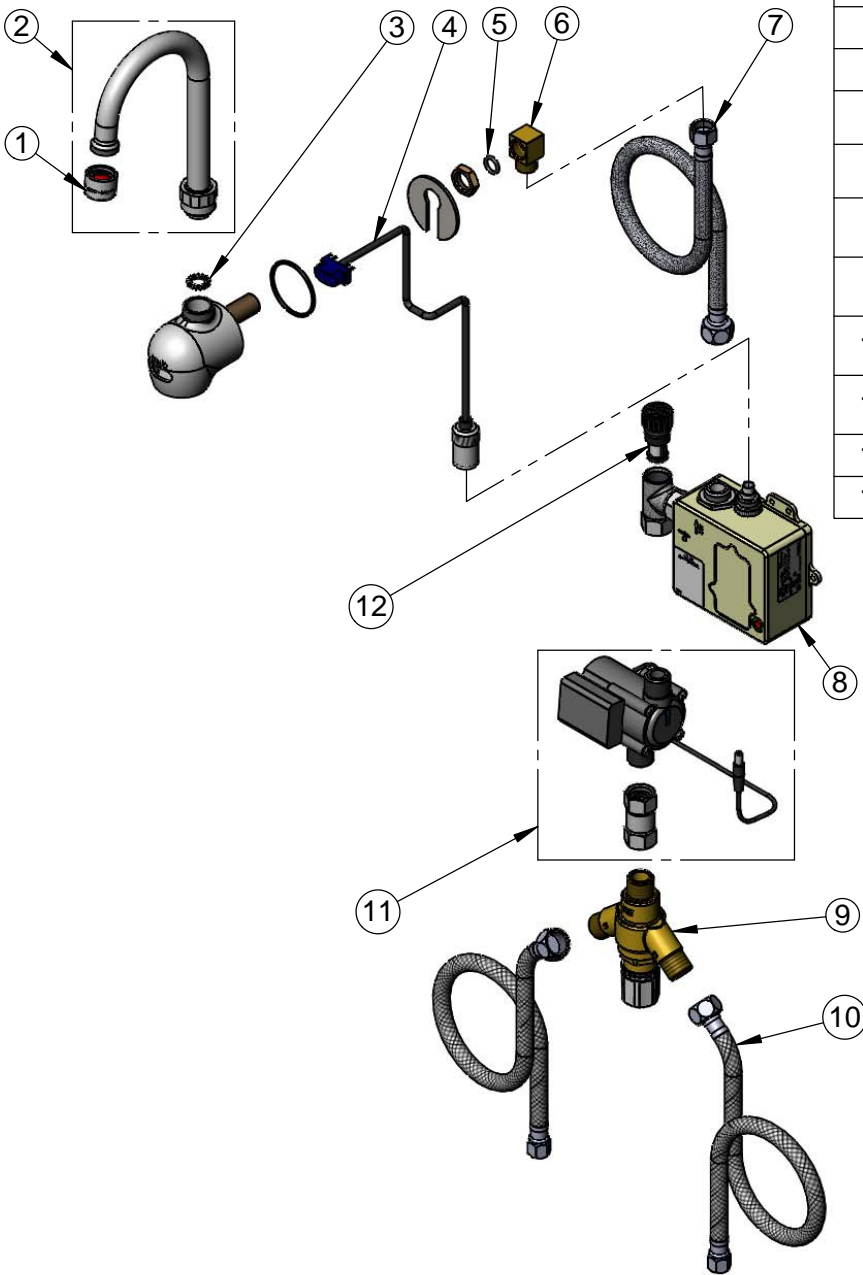
ASME A112.18.1 / CSA B125.1
 NSF 61 - Section 9
 NSF 372 (Low Lead Content)
 ANSI A117.1 (ADA)
 UL 1951

equip
 Foodservice
 Accessories

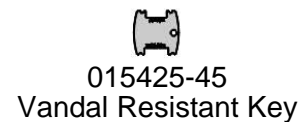


2 Saddleback Cove, P.O. Box 1088
 Travelers Rest, South Carolina 29690
 Phone: 800.891.4808 Fax: 800.868.0084
 equip.tsbrass.com

Drawn: DHL Checked: DMH Approved: JHB Date: 11/10/14 Scale: 1:6 Sheet: 1 of 2



ITEM NO.	SALES NO.	DESCRIPTION
1	B-0199-06	VR 2.2 GPM Aerator w/ Key
2	016739-40	Swivel Gooseneck w/ 2.2 GPM Aerator (5EF-1D-WGMM)
3	017421-45	Serrated Lock Washer
4	5EF-0003	24" Sensor Cable
5	001075-45	O-ring, Nitrile -111
6	015345-20	3/8-18 NPSM Low Profile Elbow
7	016325-45	Inlet Hose, Faucet, 1/2" NPSM-F x 3/8" NPSM-F
8	5EF-0001	equip Sensor Faucet - Control Module
9	5EF-TMV	ASSE 1070 Thermostatic Mixing Valve
10	5EF-0005	Supply Hose, 9/16-24 Female x 1/2" NPSM
11	EC-HYDROGEN	HydroGenerator Power Supply
12	5EF-FILTER	Replacement Filter
13	015425-45	Vandal Resistant Key



Model Number

5EF-1D-WGAT-THG

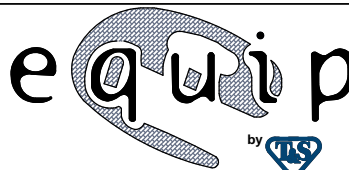
Product Specifications:

Electronic Faucet: Wall Mount Swivel Gooseneck, 2.2 GPM VR Aerator, AC-DC Control Module, Hydro-Generator, Thermostatic Mixing Valve w/ Integral Check Valves & (2) 18" Flexible Supply Hoses

Product Compliance:

ASME A112.18.1 / CSA B125.1
NSF 61 - Section 9
NSF 372 (Low Lead Content)
ANSI A117.1 (ADA)
UL 1951

equip
Foodservice
Accessories



2 Saddleback Cove, P.O. Box 1088
Travelers Rest, South Carolina 29690
Phone: 800.891.4808 Fax: 800.868.0084
equip.tsbrass.com