



# T&S BRASS AND BRONZE WORKS, INC.

2 Saddleback Cove / P.O. Box 1088  
Travelers Rest, SC 29690



REG. #A2601  
ISO #9001

Model No.

**B-0107-C90**

Item No.

Travelers Rest, SC: 800-476-4103 Simi Valley, CA: 800-423-0150 Fax: 864-834-3518 www.tsbrass.com

This Space for Architect/Engineer Approval

Job Name \_\_\_\_\_ Date \_\_\_\_\_

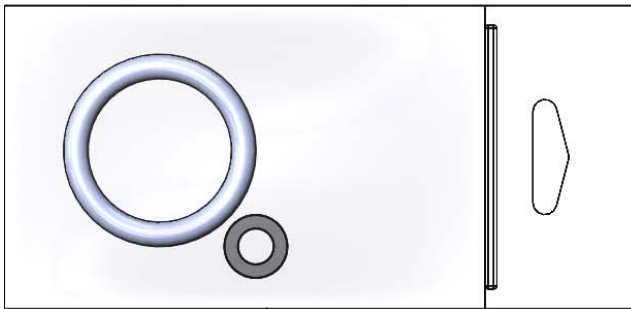
Model Specified \_\_\_\_\_ Quantity \_\_\_\_\_

Customer/Wholesaler \_\_\_\_\_

Contractor \_\_\_\_\_

Architect/Engineer \_\_\_\_\_

## EPAct 2005 Compliant



Furnished w/ Hose Washer & Hold Down Ring

Ø 1 1/2"  
[38mm]

Self-Closing Cartridge

3/4"-14UN  
Male Thread  
Inlet

5 5/16"  
[136mm]

4 1/2"  
[114mm]

Product Specifications:

Spray Valve Unit w/ 90 Degree Angle Low-Flow Nozzle, 0.65 GPM

Drawn  
JRM

Checked  
DMH

Approved  
JHB

Scale:

NTS

Date:

08/27/09



# T&S BRASS AND BRONZE WORKS, INC.

2 Saddleback Cove / P.O. Box 1088  
Travelers Rest, SC 29690



REG. #A2601  
ISO #9001

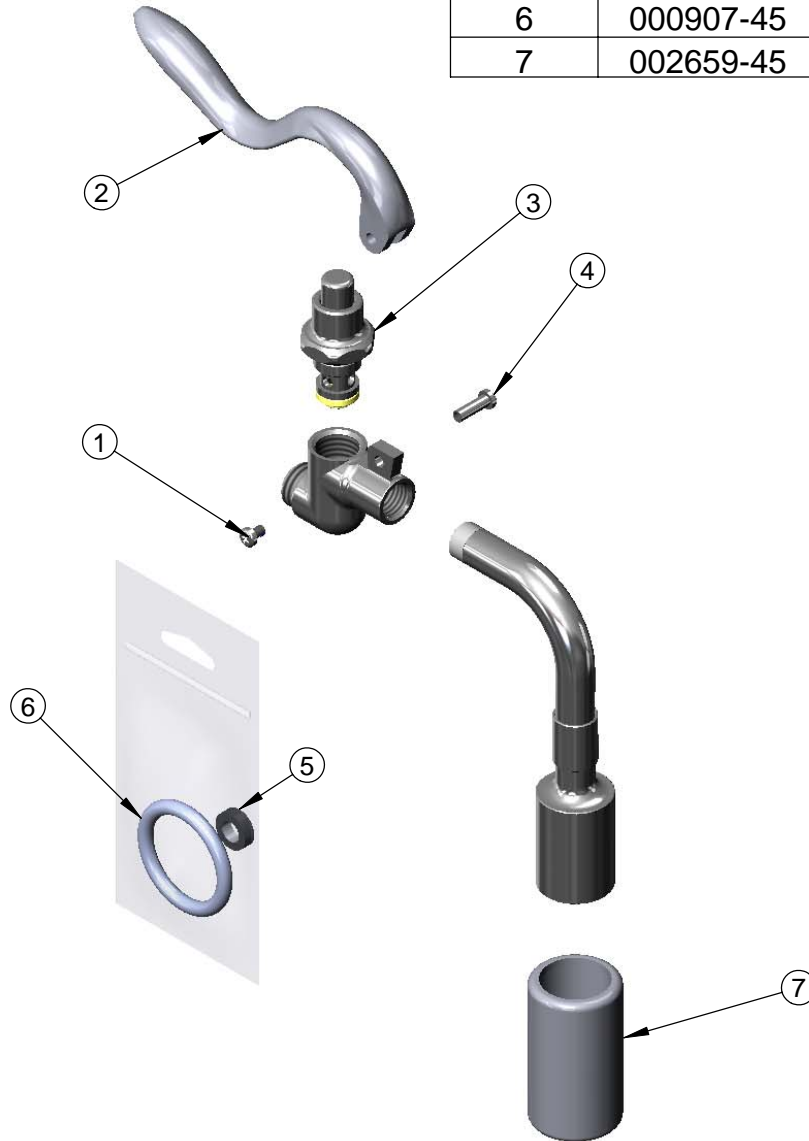
Model No.

**B-0107-C90**

Item No.

Travelers Rest, SC: 800-476-4103 Simi Valley, CA: 800-423-0150 Fax: 864-834-3518 www.tsbrass.com

ITEM NO.	SALES NO.	DESCRIPTION
1	003199-45	Handle Screw, Spray Valve
2	001120-45	Spray Valve Handle
3	002856-40	Bonnet Asm, Spray Valve
4	003198-45	Handle Nut, Spray Valve
5	010476-45	#27 Washer
6	000907-45	Ring, Spray Valve Hold Down
7	002659-45	Shield, Low Flow 0.65 GPM



Product Specifications:

**Spray Valve Unit w/ 90 Degree Angle Low-Flow Nozzle, 0.65 GPM**

Drawn

JRM

Checked

DMH

Approved

JHB

Scale:

NTS

Date:

08/27/09