



**T&S BRASS AND BRONZE WORKS, INC.**

2 Saddleback Cove / P.O. Box 1088  
Travelers Rest, SC 29690



REG. #A2601  
ISO #9001

Model No.

**B-0113-CR-BVB-A**

Item No.

Travelers Rest, SC: 800-476-4103 • Simi Valley, CA: 800-423-0150 • Fax: 864-834-3518 • www.tsbrass.com

This Space for Architect/Engineer Approval

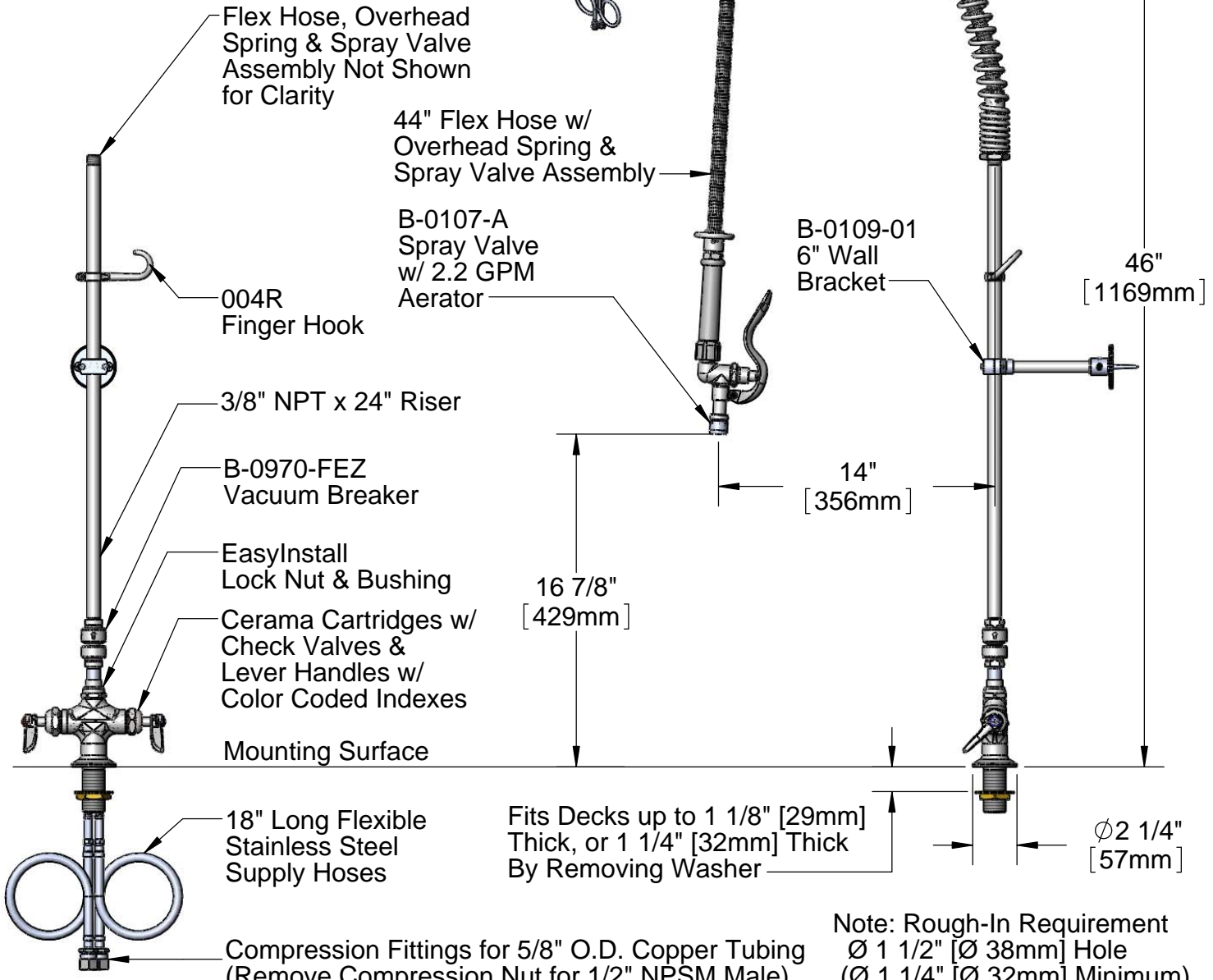
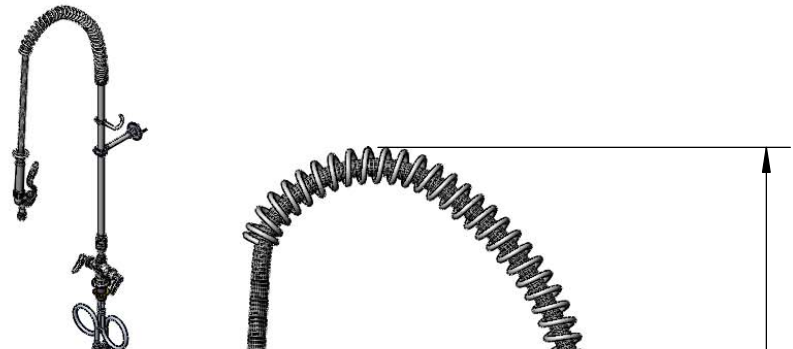
Job Name \_\_\_\_\_ Date \_\_\_\_\_

Model Specified \_\_\_\_\_ Quantity \_\_\_\_\_

Customer/Wholesaler \_\_\_\_\_

Contractor \_\_\_\_\_

Architect/Engineer \_\_\_\_\_



Product Specifications:  
Single Deck Mount Vertical Glass Filler, Cerama Cartridges w/ Check Valves, B-0970-FEZ Vacuum Breaker, Flexible Supply Hoses, 24" Riser, 44" Flex Hose w/ B-0107-A Spray Valve & 6" Wall Bracket

Drawn <b>DHL</b>	Checked <b>JRM</b>	Approved <b>JHB</b>
Scale: <b>1:8</b>		Date: <b>05/31/11</b>



**T&S BRASS AND BRONZE WORKS, INC.**

2 Saddleback Cove / P.O. Box 1088  
 Travelers Rest, SC 29690

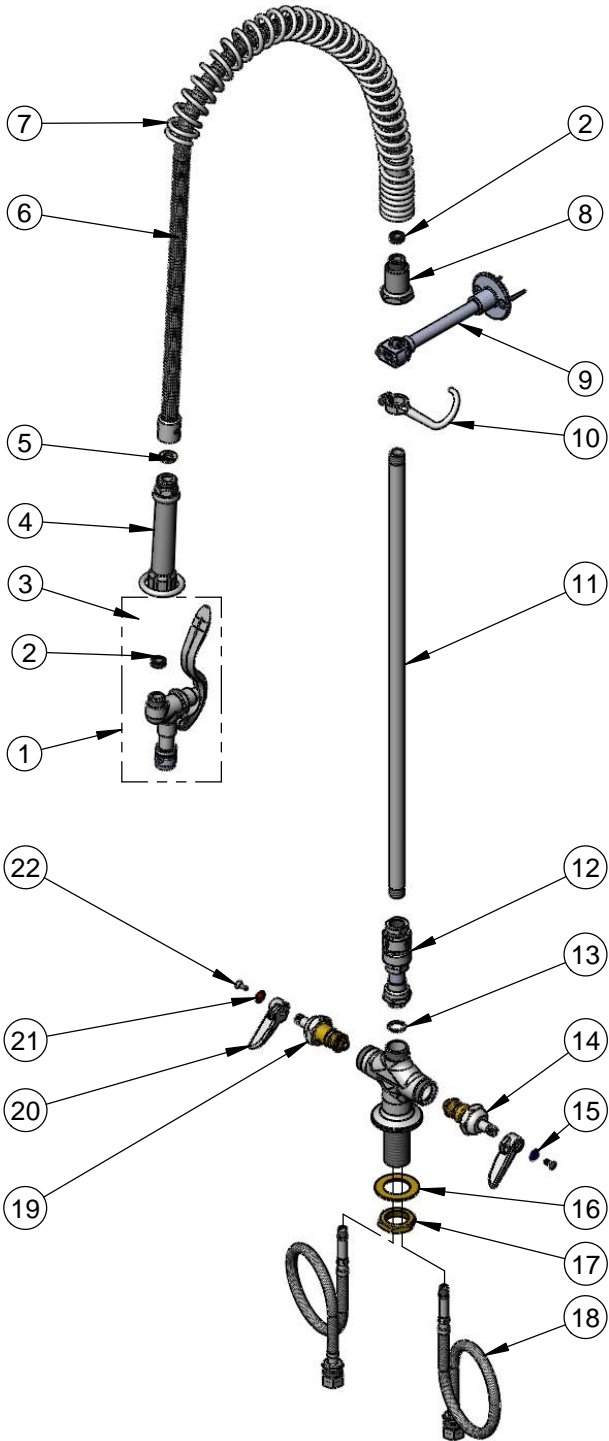


REG. #A2601  
 ISO #9001

Model No.  
**B-0113-CR-BVB-A**

Item No.

Travelers Rest, SC: 800-476-4103 • Simi Valley, CA: 800-423-0150 • Fax: 864-834-3518 • www.tsbrass.com



ITEM NO.	SALES NO.	DESCRIPTION
1	B-0107-A	Spray Valve w/ B-0199-01
2	010476-45	#27 Washer
3	000907-45	Spray Valve Hold Down Ring
4	002987-40	Grip Handle Assembly
5	001014-45	Washer, B-0100 Hose Barrel
6	B-0044-H2A	44" Flex Hose Assembly, Less Handle
7	000888-45	EasyInstall Overhead Spring
8	000821-40	Spring Body
9	B-0109-01	6" Wall Support
10	004R	Finger Hook Assembly
11	000372-40	3/8" NPT x 24" Long Riser
12	B-0970-FEZ	EasyInstall Vacuum Breaker
13	014200-45	Star Washer, Anti-Rotation
14	011312-25	Ceramic Cartridge LTC w/ Check Valve
15	001660-45	Blue Index-CW
16	002290-45	Lock Washer
17	000965-45	Lock Nut
18	012534-45	Flexible Connector Hose
19	011311-25	Ceramic Cartridge RTC w/ Check Valve
20	001638-45	Lever Handle
21	001661-45	Red Index-HW
22	000922-45	Lever Handle Screw

**Product Specifications:**

Single Deck Mount Vertical Glass Filler, Cerama Cartridges w/ Check Valves, B-0970-FEZ Vacuum Breaker, Flexible Supply Hoses, 24" Riser, 44" Flex Hose w/ B-0107-A Spray Valve & 6" Wall Bracket

Drawn <b>DHL</b>	Checked <b>JRM</b>	Approved <b>JHB</b>
Scale: <b>NTS</b>		Date: <b>05/31/11</b>