



T&S BRASS AND BRONZE WORKS, INC.

2 Saddleback Cove / P.O. Box 1088
Travelers Rest, SC 29690

Model No.

B-0123-B08

Item No.

Travelers Rest, SC: 800-476-4103 • Simi Valley, CA: 800-423-0150 • Fax: 864-834-3518 • www.tsbrass.com

This Space for Architect/Engineer Approval

Job Name _____ Date _____

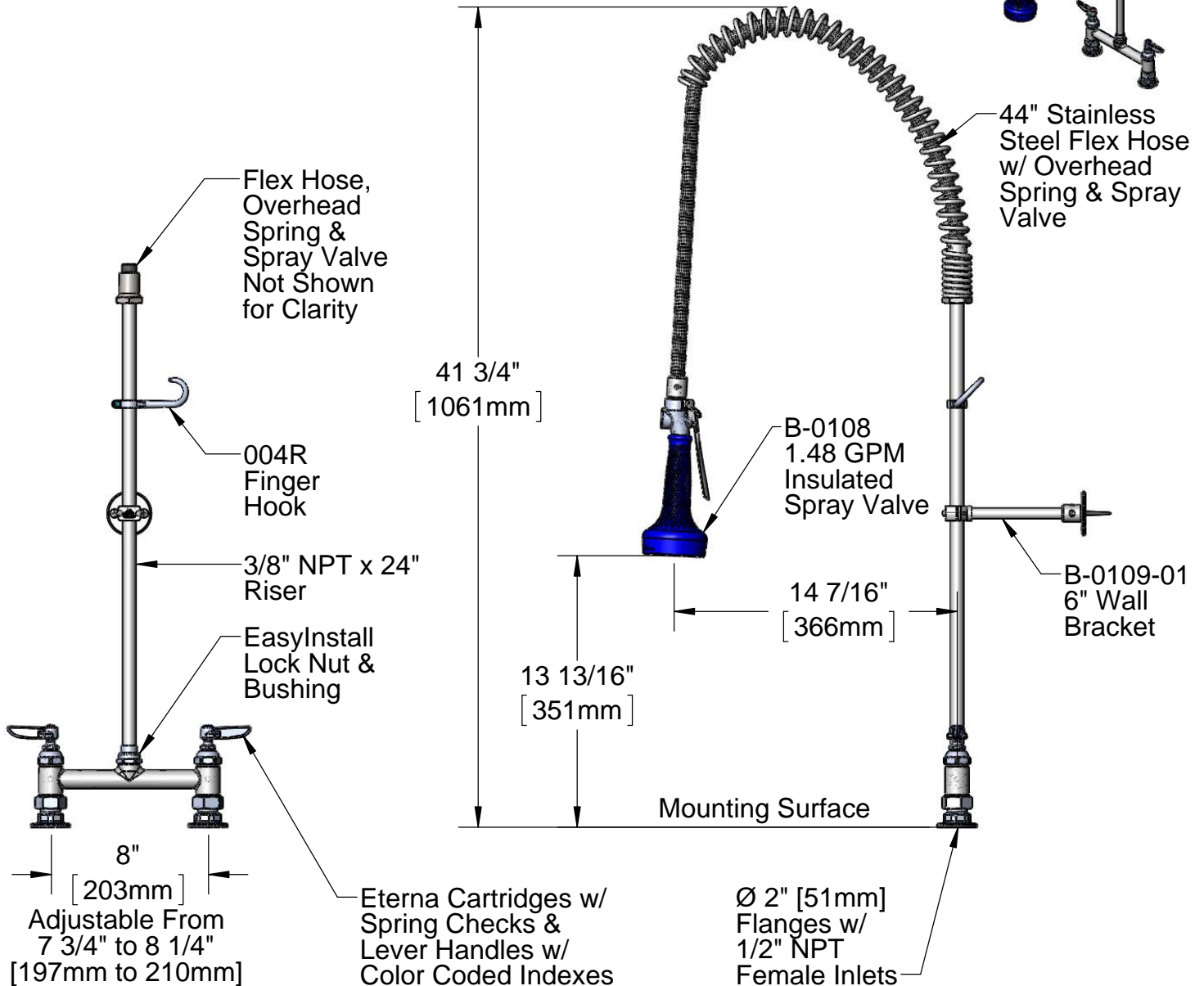
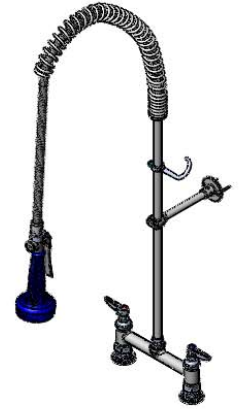
Model Specified _____ Quantity _____

Customer/Wholesaler _____

Contractor _____

Architect/Engineer _____

EPAct 2005 Compliant



Product Specifications:

8" c/c Deck Mount Mixing Faucet, Eterna Cartridges w/ Spring Checks, 24" Riser, 44" Stainless Steel Flex Hose w/ 1.48 GPM Spray Valve, 6" Wall Bracket & 1/2" NPT Female Inlets

Drawn

DHL

Checked

GEF

Approved

JHB

Scale:

1:8

Date:

02/03/12



T&S BRASS AND BRONZE WORKS, INC.

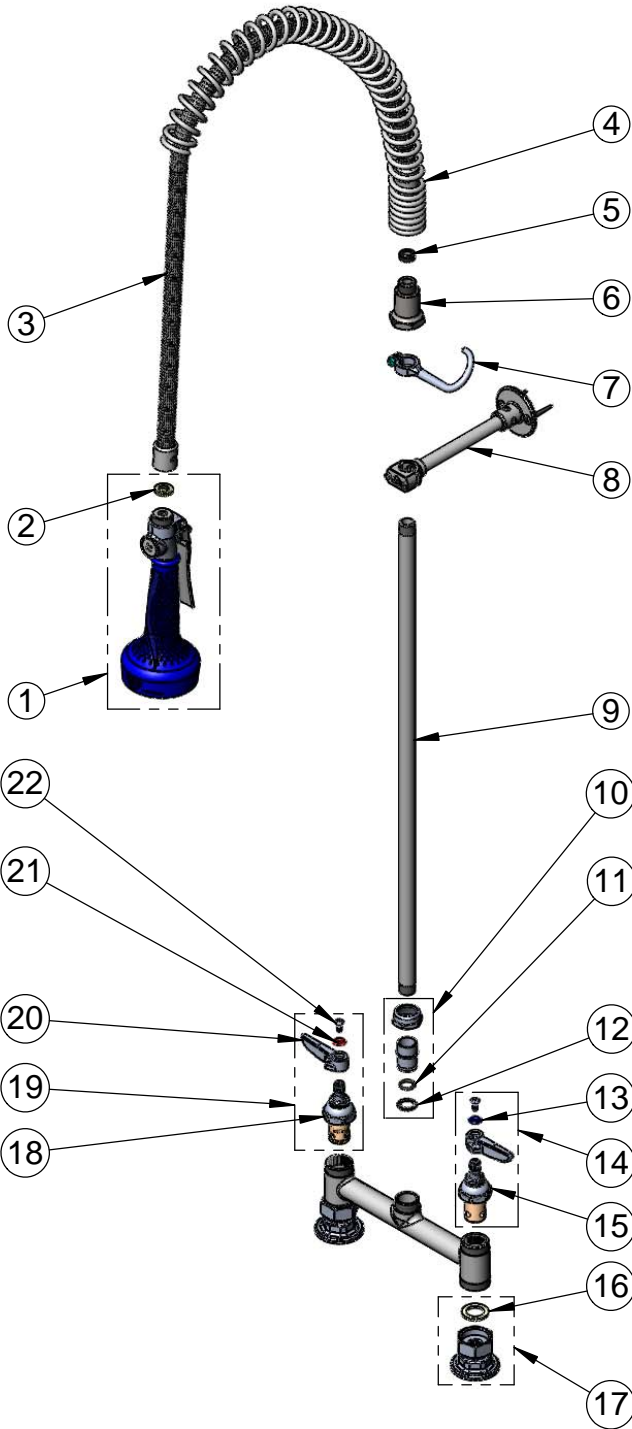
2 Saddleback Cove / P.O. Box 1088
Travelers Rest, SC 29690

Model No.

B-0123-B08

Item No.

Travelers Rest, SC: 800-476-4103 • Simi Valley, CA: 800-423-0150 • Fax: 864-834-3518 • www.tsbrass.com



ITEM NO.	SALES NO.	DESCRIPTION
1	B-0108	Insulated 1.48 GPM Spray Valve
2	001014-45	Washer, B-0100 Hose Barrel
3	B-0044-H2A	44" Stainless Steel Flex Hose - Less Handle
4	000888-45	EasyInstall Overhead Spring
5	010476-45	#27 Washer
6	000821-40	Spring Body
7	004R	Finger Hook Assembly
8	B-0109-01	6" Wall Bracket
9	00372-40	Nipple, 3/8 x 24"
10	EZ-K	EasyInstall Kit: Bushing, O-ring, Lock Washer & Loctite 222
11	001065-45	O-Ring
12	014200-45	Star Washer, Anti-Rotation
13	001660-45	Blue Index-CW
14	002711-40	Cold Eterna Cartridge (LTC) w/ Spring Check, Handle, Index & Screw
15	012442-40	Cold Eterna w/ Spring Check
16	001019-45	Coupling Nut Washer
17	00AA	Flange Assembly
18	012443-40	Hot Eterna w/ Spring Check
19	002712-40	Hot Eterna Cartridge (RTC) w/ Spring Check, Handle, Index & Screw
20	001638-45	Lever Handle
21	001661-45	Red Index-HW
22	000922-45	Lever Handle Screw

Product Specifications:

8" c/c Deck Mount Mixing Faucet, Eterna Cartridges w/ Spring Checks, 24" Riser, 44" Stainless Steel Flex Hose w/ 1.48 GPM Spray Valve, 6" Wall Bracket & 1/2" NPT Female Inlets

Drawn

DHL

Checked

GEF

Approved

JHB

Scale:

NTS

Date:

02/03/12