



T&S BRASS AND BRONZE WORKS, INC.

2 SADDLEBACK COVE / P.O. BOX 1088 / TRAVELERS REST, SC 29690

PHONE 800-476-4103 - FAX 864- 834-3518



REG.#A2601
ISO #9001

Model No.

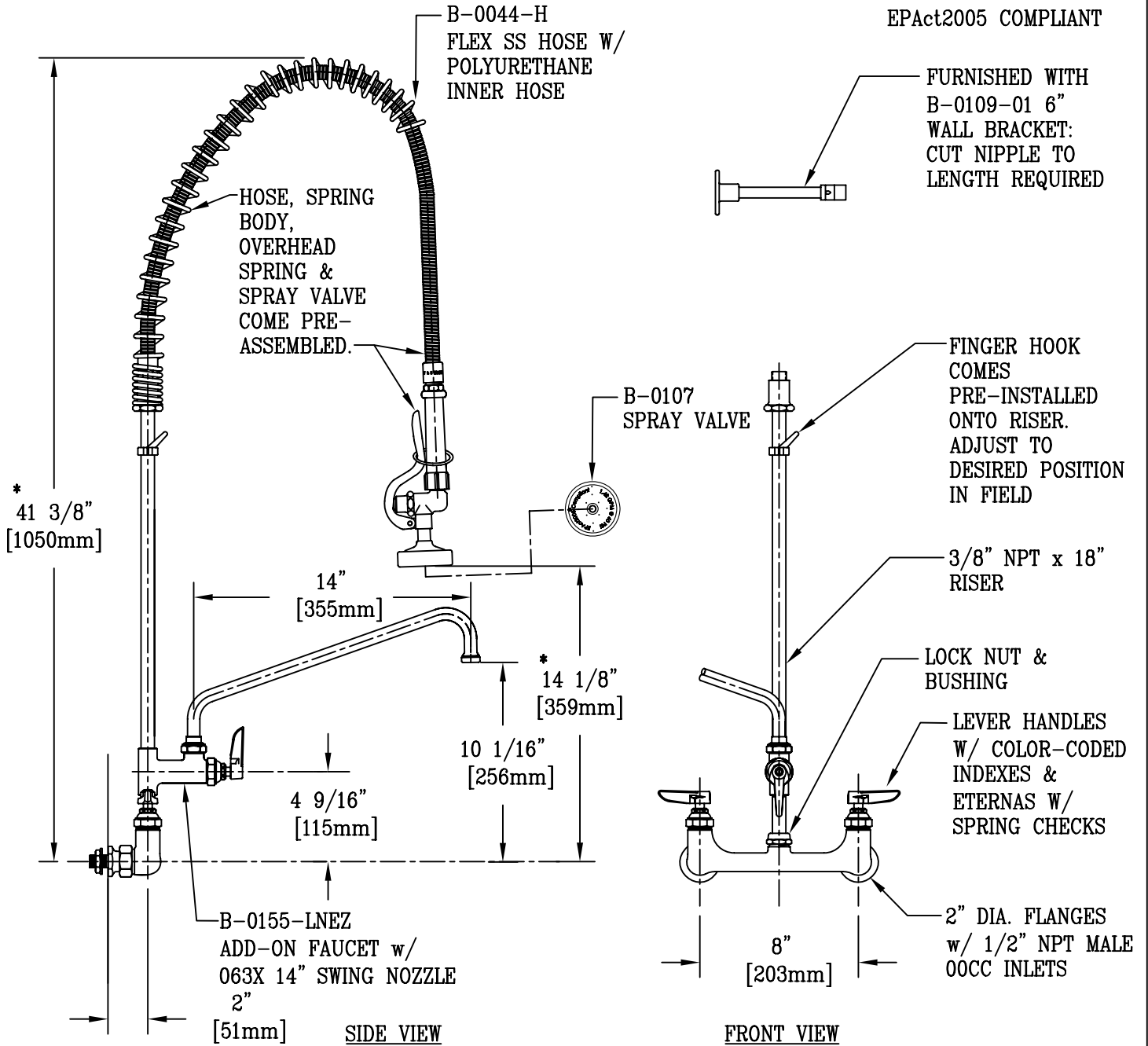
B-0133-A14-CCB

**RELIABILITY
BUILT IN**

Job Name:

Architect/Engineer Approval:

Notes:



* DIMENSIONS MAY VARY ± 1/2" ON EACH INSTALLATION

| | | | |
|-----------------------------------------------------------------------------------------------------------------------------------------------------------------------------------------------------------------|-----------|----------|--------|
| Product Description: EASY INSTALL PRE-RINSE UNIT: 8" c/c WALL MOUNT BASE FAUCET, 1/2" NPT MALE OOC INLETS, 18" RISER, ADD ON FCT., 14" SWING NOZZLE, SUPPORT SPRING, 44" FLEX HOSE, B-0107 SPRAY VALVE | Drawn: | Checked: | Scale: |
| | JRM | KJG | 1 : 8 |
| | Approved: | Date: | |
| JHB | 06/25/09 | | |