

T&S BRASS AND BRONZE WORKS, INC.
 2 SADDLEBACK COVE / P.O. BOX 1088 / TRAVELERS REST, SC 29690
 PHONE 800-476-4103 FAX 864-834-3518



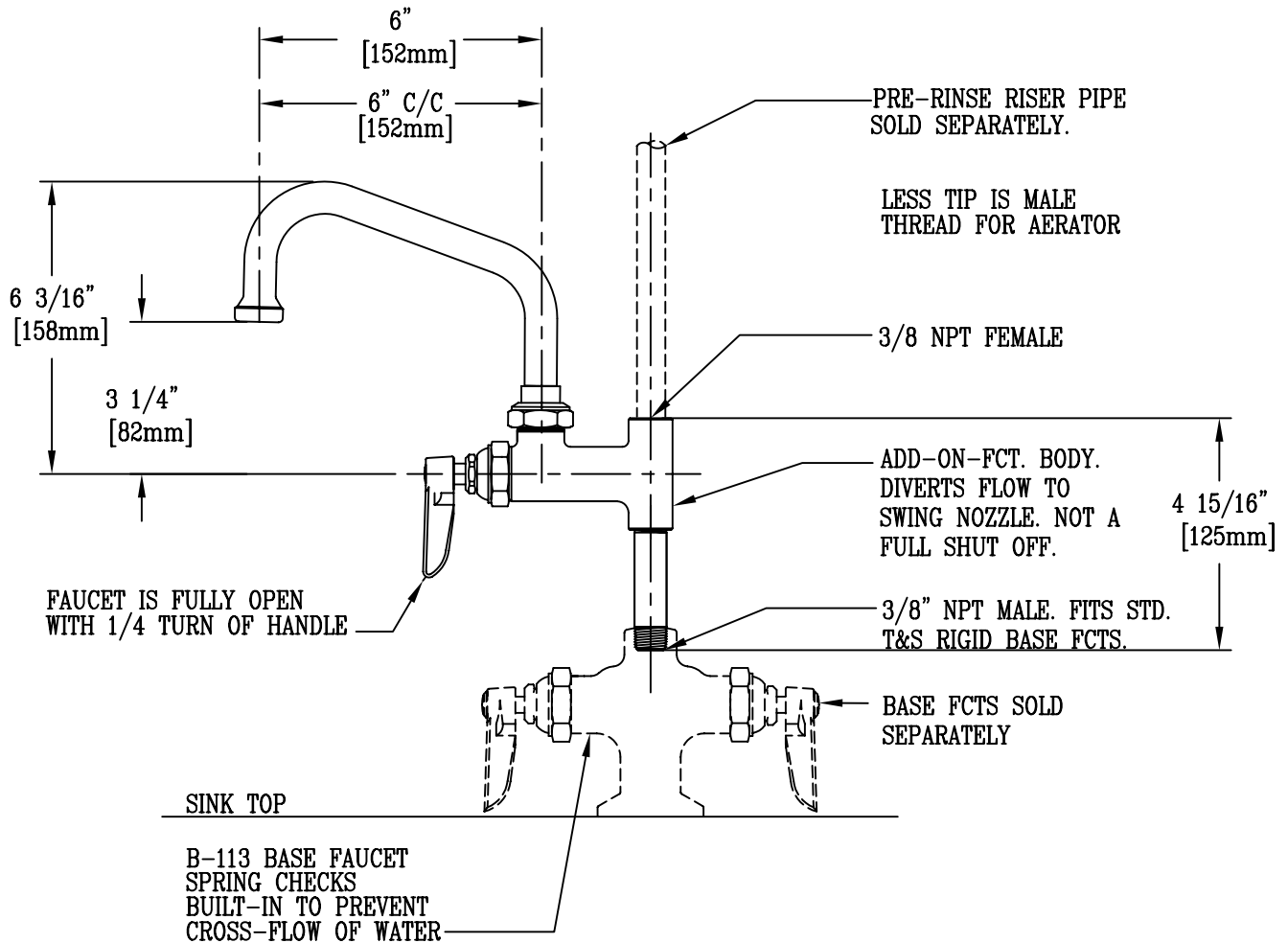
Model No.
 B-0155-M
 Item No.:

Job Name: Architect/Engineer Approval:

Notes:



ADA COMPLIANT



NOTES: THE ADD-ON FAUCET IS AN ADDITION TO PRE-RINSE UNITS AND IS INSTALLED IN OUTLETS OF BASE MIXING FAUCETS OF UNITS BEFORE FITTING RISER PIPE, AS SHOWN.

LEVER HANDLE CONTROLS WATER ON-OFF THRU NOZZLE ONLY; PRESSURE IS ALWAYS "ON" IN RISER PIPE. (CONTROLLED BY BASE FAUCET).

Product Description: ADD-ON FAUCET w/ 6" SWING NOZZLE AND 1/4" TURN HANDLES (MASTER PACK - QUANTITY 6)	Drawn:	Checked:	Scale:
	WJS	JKD	1 : 4
	Approved:	Date:	
	MVW	8/18/99	