



T&S BRASS AND BRONZE WORKS, INC.

2 Saddleback Cove / P.O. Box 1088
Travelers Rest, SC 29690



REG. #A2601
ISO #9001

Model No.

B-0165-C35-68H

Item No.

Travelers Rest, SC: 800-476-4103 • Simi Valley, CA: 800-423-0150 • Fax: 864-834-3518 • www.tsbrass.com

This Space for Architect/Engineer Approval

Job Name _____ Date _____

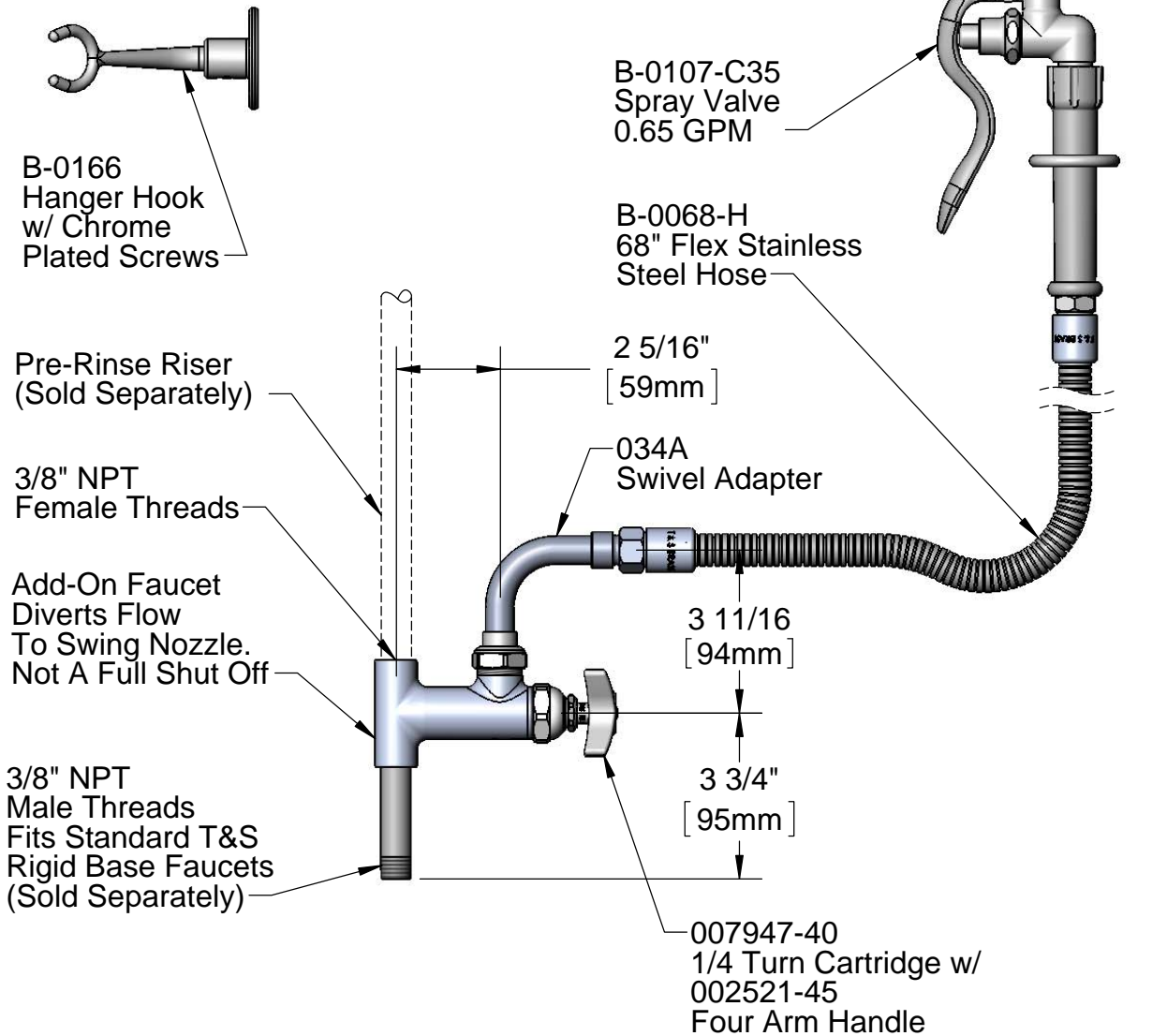
Model Specified _____ Quantity _____

Customer/Wholesaler _____

Contractor _____

Architect/Engineer _____

EPA Act 2005 COMPLIANT



Product Specifications:

Wash Down Hose Unit w/ 1/4 Turn Cartridge, Four Arm Handle,
68" Flex Stainless Steel Hose & 0.65 GPM Spray Valve

Drawn

KJG

Checked

DHL

Approved

JHB

Scale:

1:4

Date:

06/06/11



T&S BRASS AND BRONZE WORKS, INC.

2 Saddleback Cove / P.O. Box 1088
Travelers Rest, SC 29690



REG. #A2601
ISO #9001

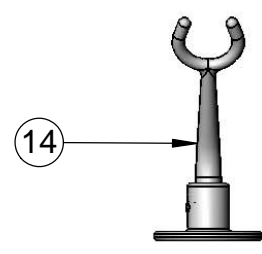
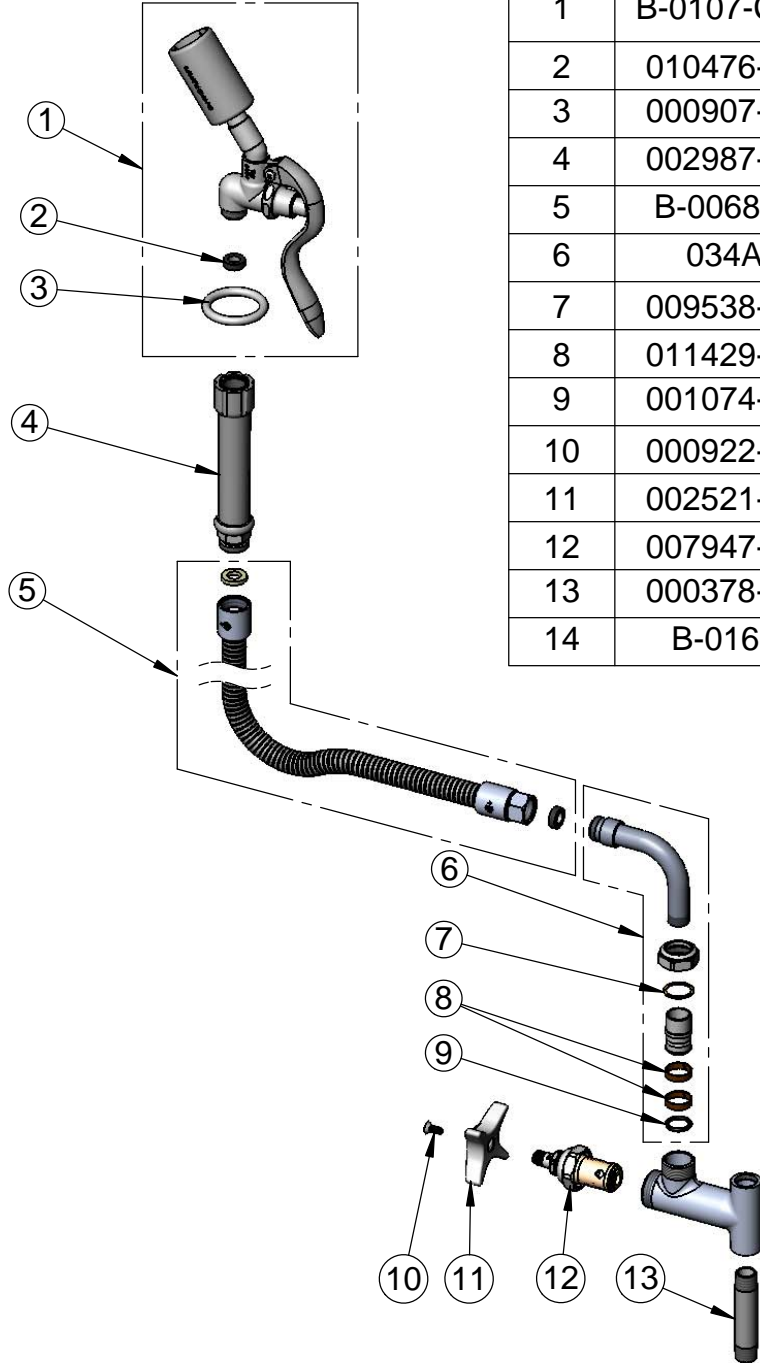
Model No.

B-0165-C35-68H

Item No.

Travelers Rest, SC: 800-476-4103 • Simi Valley, CA: 800-423-0150 • Fax: 864-834-3518 • www.tsbrass.com

ITEM NO.	SALES NO.	DESCRIPTION
1	B-0107-C35	0.65 GPM Spray Valve Assembly w/ Hold Down Ring & Washer
2	010476-45	#27 Washer
3	000907-45	Spray Valve Hold Down Ring
4	002987-40	Grip Handle Assembly
5	B-0068-H	68" SS Flex Hose Assembly w/ Washers
6	034A	Swivel Adapter Assembly
7	009538-45	Swivel Washer
8	011429-45	Swivel Sleeves (2)
9	001074-45	O-Ring
10	000922-45	Lever Handle Screw
11	002521-45	Four Arm Handle
12	007947-40	Quarter Turn Eterna RTC
13	000378-40	Nipple, 3/8" NPT x 3" Lg
14	B-0166	Hanger Hook w/ Chrome Plated Screws



Product Specifications:
Wash Down Hose Unit w/ 1/4 Turn Cartridge, Four Arm Handle,
68" Flex Stainless Steel Hose & 0.65 GPM Spray Valve

Drawn KJG	Checked DHL	Approved JHB
Scale: NTS		Date: 06/06/11