

T&S BRASS AND BRONZE WORKS, INC.

2 Saddleback Cove / P.O. Box 1088
Travelers Rest, SC 29690

Model No.

B-0177

Item No.

Travelers Rest, SC: 800-476-4103 • Simi Valley, CA: 800-423-0150 • Fax: 864-834-3518 • www.tsbrass.com



ADA Compliant

EPA Act 2005 Compliant

This Space for Architect/Engineer Approval

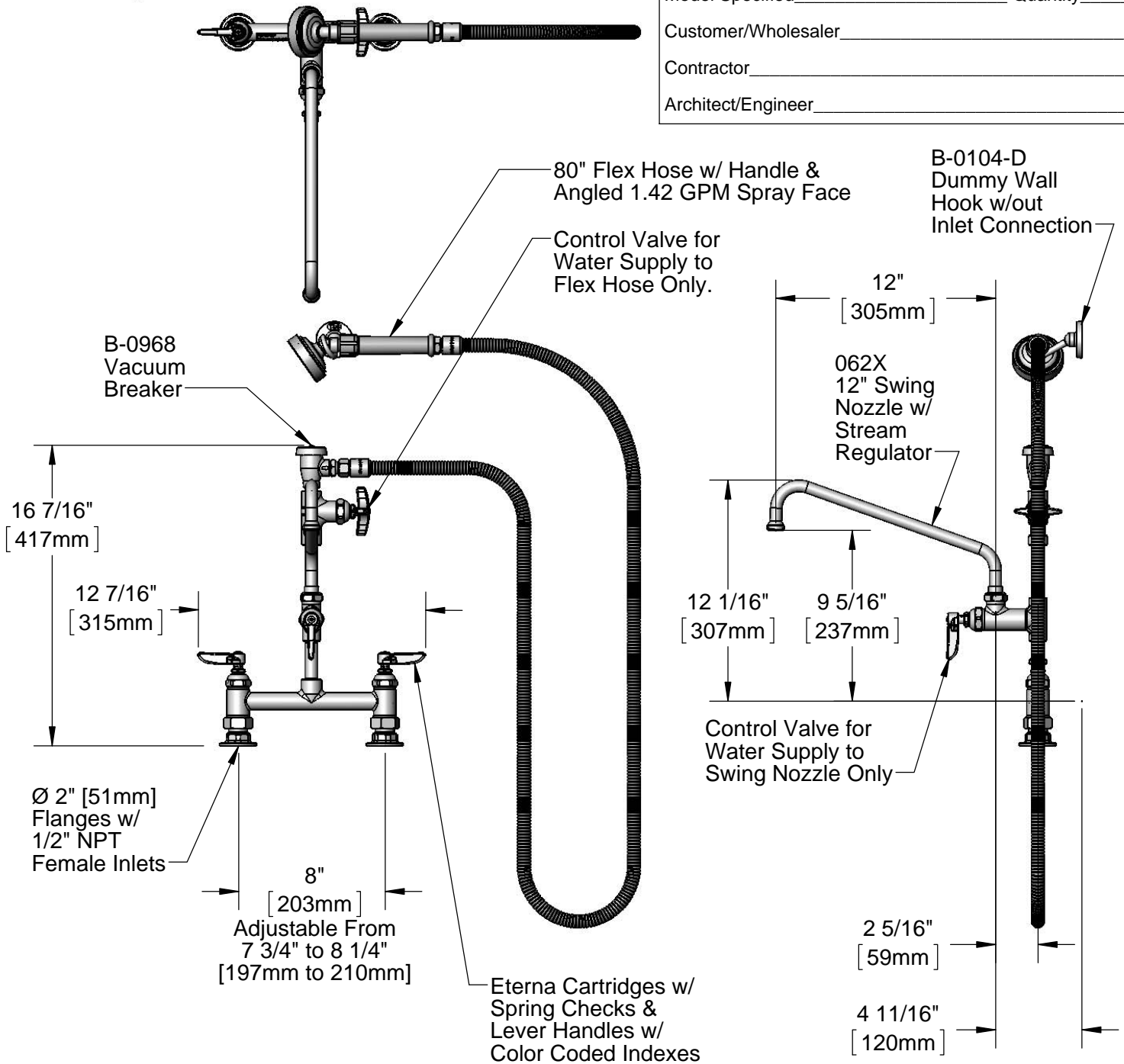
Job Name _____ Date _____

Model Specified _____ Quantity _____

Customer/Wholesaler _____

Contractor _____

Architect/Engineer _____



Product Specifications:

8" Deck Mount Mixing Faucet, Eterna Cartridges w/ Spring Checks, Add-On Faucet w/ 12" Swing Nozzle, Control Valve, Vacuum Breaker, 80" Stainless Steel Flex Hose w/ Angled 1.42 GPM Spray Face & 1/2" NPT Female Inlets

Drawn

DHL

Checked

DMH

Approved

JHB

Scale:

1:8

Date:

08/29/12



T&S BRASS AND BRONZE WORKS, INC.

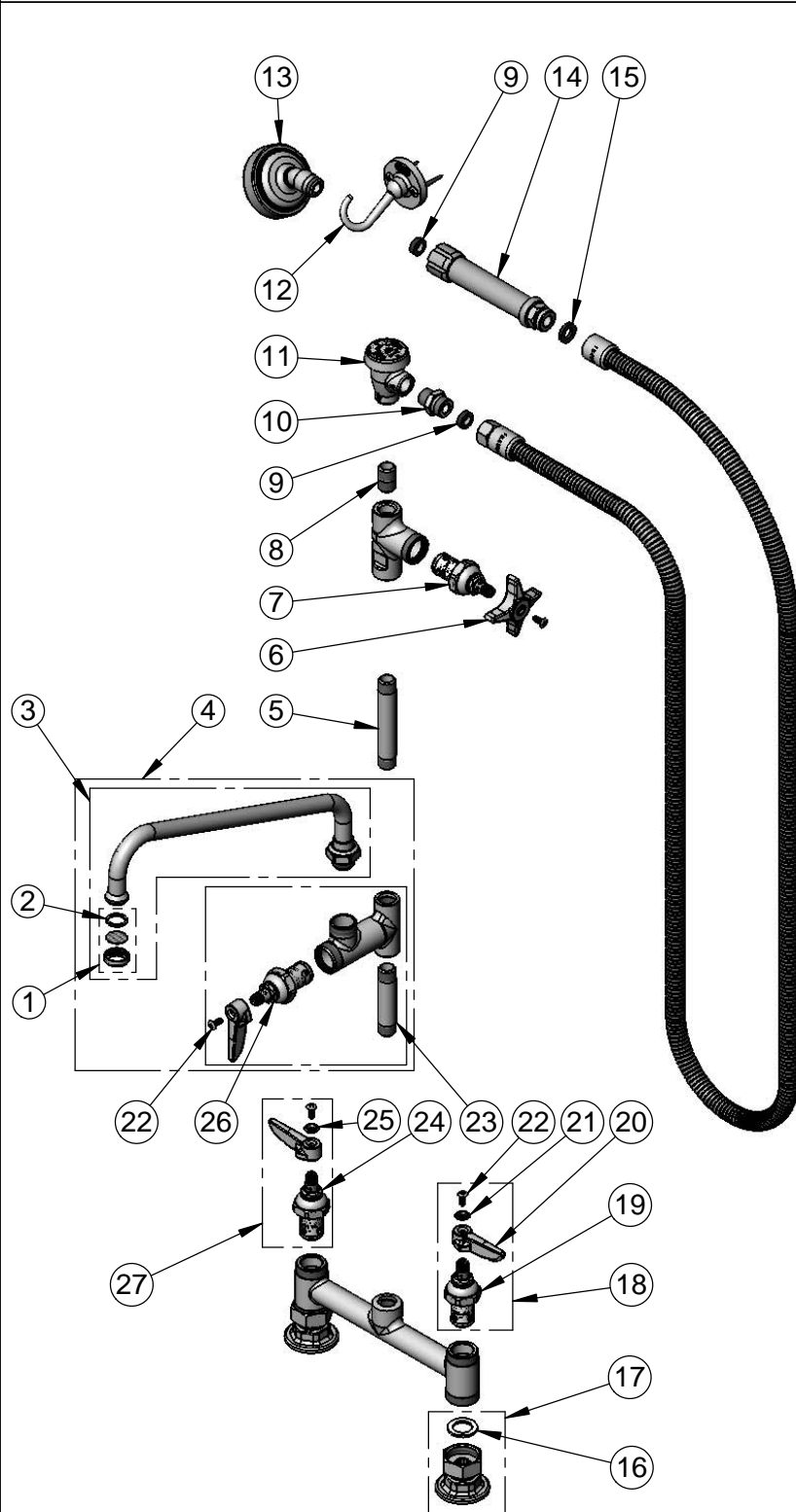
2 Saddleback Cove / P.O. Box 1088
Travelers Rest, SC 29690

Model No.

B-0177

Item No.

Travelers Rest, SC: 800-476-4103 • Simi Valley, CA: 800-423-0150 • Fax: 864-834-3518 • www.tsbrass.com



| ITEM NO. | SALES NO. | DESCRIPTION |
|----------|-----------|--|
| 1 | B-PT | Stream Regulator |
| 2 | 001048-45 | Nozzle Tip Washer |
| 3 | 062X | 12" Swing Nozzle w/ Stream Regulator |
| 4 | B-0156 | Add-On Faucet w/ 12" Swing Nozzle |
| 5 | 000360-40 | Nipple, 3/8" NPT x 4" |
| 6 | 002521-45 | 4-Arm Handle |
| 7 | 005960-40 | Eterna Cartridge, RTC |
| 8 | 002535-25 | 3/8" Close Nipple |
| 9 | 010476-45 | #27 Washer |
| 10 | 053A | Adapter, 3/8" NPT x 3/4"-14 UNS |
| 11 | B-0968 | 3/8" NPT Vacuum Breaker |
| 12 | B-0104-D | Dummy Wall Hook |
| 13 | 005969-40 | Angled 1.42 GPM Spray Face |
| 14 | 002987-40 | Gray Grip Handle |
| 15 | 001014-45 | Washer, B-0100 Hose Barrel |
| 16 | 001019-45 | Coupling Nut Washer |
| 17 | 00AA | Flange Assembly |
| 18 | 002711-40 | Eterna Cartridge, LTC w/ Spring Check, Lever Handle, Index & Screw |
| 19 | 012442-40 | Eterna Cartridge, LTC w/ Spring Check |
| 20 | 001638-45 | Lever Handle |
| 21 | 001660-45 | Blue Index-CW |
| 22 | 000922-45 | Lever Handle Screw |
| 23 | 000358-40 | Nipple, 3/8" NPT x 3" |
| 24 | 012443-40 | Eterna Cartridge, RTC w/ Spring Check |
| 25 | 001661-45 | Red Index-HW |
| 26 | 007947-40 | Eterna Cartridge, RTC w/ Quarter Turn |
| 27 | 002712-40 | Eterna Cartridge, RTC w/ Spring Check, Lever Handle, Index & Screw |

Product Specifications:

8" Deck Mount Mixing Faucet, Eterna Cartridges w/ Spring Checks, Add-On Faucet w/ 12" Swing Nozzle, Control Valve, Vacuum Breaker, 80" Stainless Steel Flex Hose w/ Angled 1.42 GPM Spray Face & 1/2" NPT Female Inlets

| | | |
|------------|------------|-----------------|
| Drawn | Checked | Approved |
| DHL | DMH | JHB |
| Scale: | | Date: |
| NTS | | 08/29/12 |