



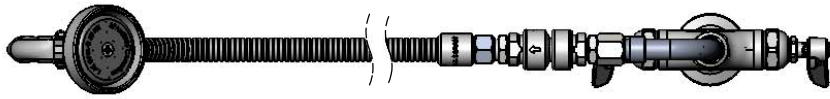
T&S BRASS AND BRONZE WORKS, INC.
 2 Saddleback Cove / P.O. Box 1088
 Travelers Rest, SC 29690

Model No.
B-0200-44H-VB

Item No.

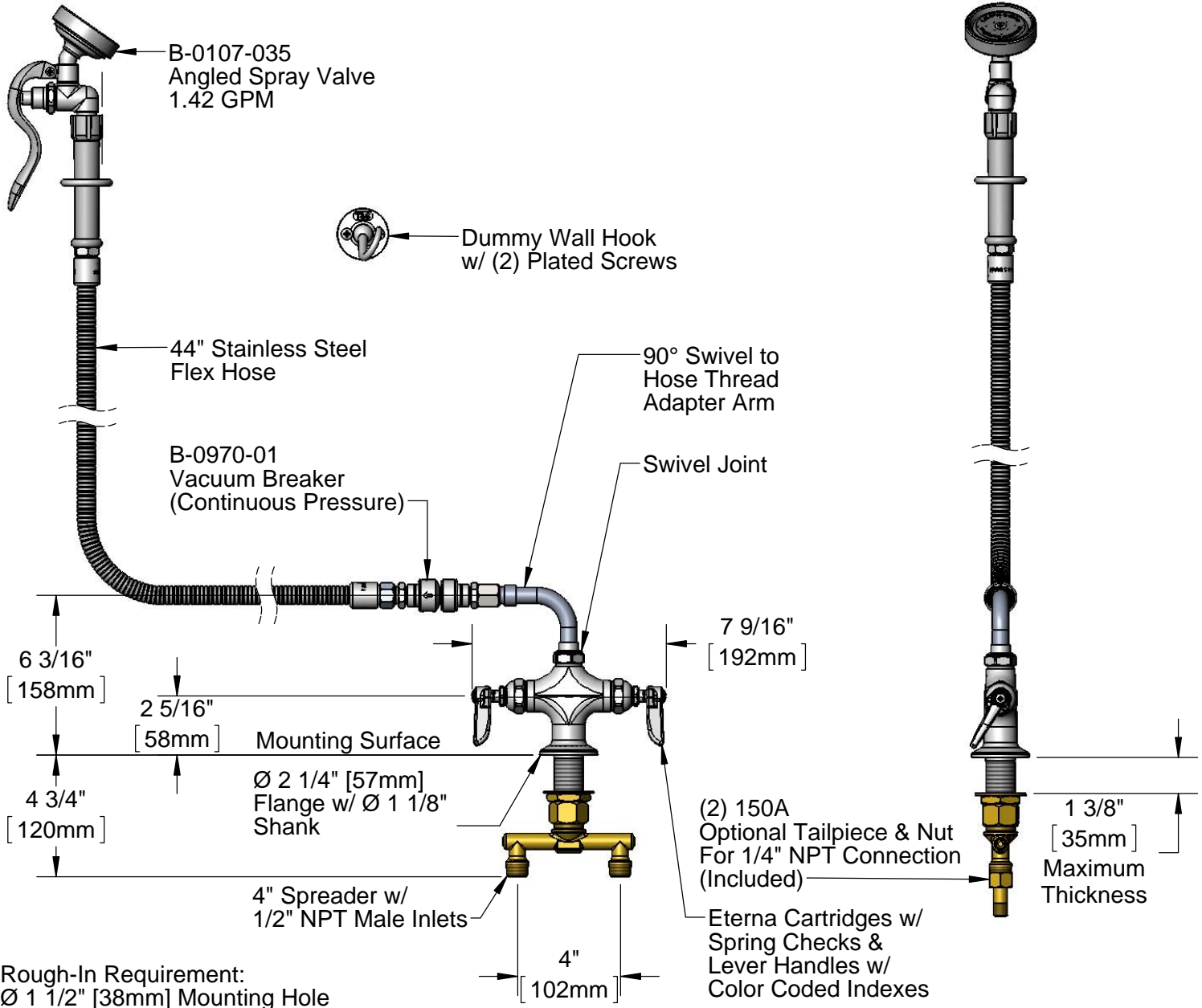
Travelers Rest, SC: 800-476-4103 • Simi Valley, CA: 800-423-0150 • Fax: 864-834-3518 • www.tsbrass.com

EPAAct2005 Compliant



This Space for Architect/Engineer Approval

Job Name _____ Date _____
 Model Specified _____ Quantity _____
 Customer/Wholesaler _____
 Contractor _____
 Architect/Engineer _____



Product Specifications:
 Single Hole Deck Mount Mixing Faucet, Eterna Cartridges
 w/ Spring Checks, 90° Swivel Adapter, 44" Stainless Steel
 Flex Hose, Angled 1.42 GPM Spray Valve, Vacuum Breaker,
 Dummy Wall Hook & 4" Spreader w/ 1/2" NPT Male Inlets

Drawn DHL	Checked KJG	Approved JHB
Scale: 1:6		Date: 03/01/13

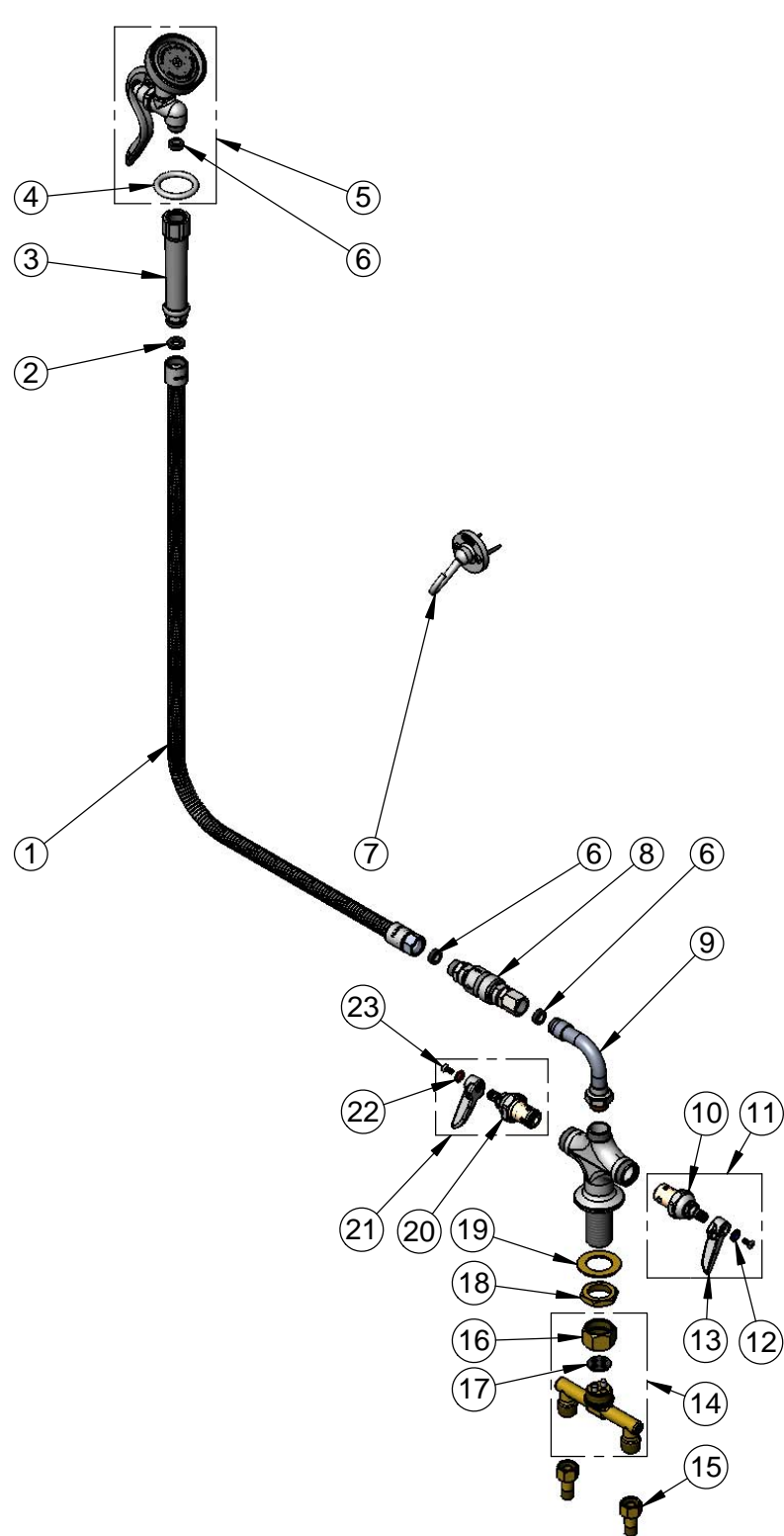


T&S BRASS AND BRONZE WORKS, INC.
 2 Saddleback Cove / P.O. Box 1088
 Travelers Rest, SC 29690

Model No.
B-0200-44H-VB

Item No.

Travelers Rest, SC: 800-476-4103 • Simi Valley, CA: 800-423-0150 • Fax: 864-834-3518 • www.tsbrass.com



ITEM NO.	SALES NO.	DESCRIPTION
1	B-0044-H2A	44" Stainless Steel Flex Hose, Less Handle
2	001014-45	Washer, B-0100 Hose Barrel
3	002987-40	Gray Grip Handle
4	000907-45	Spray Valve Hold Down Ring
5	B-0107-035	Angled Spray Valve 1.42 GPM
6	010476-45	#27 Washer
7	B-0104-D	Dummy Wall Hook
8	B-0970-01	Vacuum Breaker
9	034A	Swivel Adapter Arm
10	012442-40	Eterna Cartridge, LTC w/ Spring Check
11	002711-40	Eterna Cartridge, LTC w/ Spring Check, Lever Handle, Index & Screw
12	001660-45	Blue Index-CW
13	001638-45	Lever Handle
14	002898-40	4" Spreader Unit
15	150A	Bag of (1) Tailpiece & (1) Nut
16	000736-20	Spreader Coupler Nut
17	001041-45	Spreader Washer
18	000965-45	Lock Nut
19	002290-45	Lock Washer
20	012443-40	Eterna Cartridge, RTC w/ Spring Check
21	002712-40	Eterna Cartridge, RTC w/ Spring Check, Lever Handle, Index & Screw
22	001661-45	Red Index-HW
23	000922-45	Lever Handle Screw

Product Specifications:

Single Hole Deck Mount Mixing Faucet, Eterna Cartridges w/ Spring Checks, 90° Swivel Adapter, 44" Stainless Steel Flex Hose, Angled 1.42 GPM Spray Valve, Vacuum Breaker, Dummy Wall Hook & 4" Spreader w/ 1/2" NPT Male Inlets

Drawn DHL	Checked KJG	Approved JHB
Scale: NTS		Date: 03/01/13