



T&S BRASS AND BRONZE WORKS, INC.
 2 Saddleback Cove / P.O. Box 1088
 Travelers Rest, SC 29690

Model No.
B-0207-CR

Item No.

Travelers Rest, SC: 800-476-4103 • Simi Valley, CA: 800-423-0150 • Fax: 864-834-3518 • www.tsbrass.com

This Space for Architect/Engineer Approval

Job Name _____ Date _____

Model Specified _____ Quantity _____

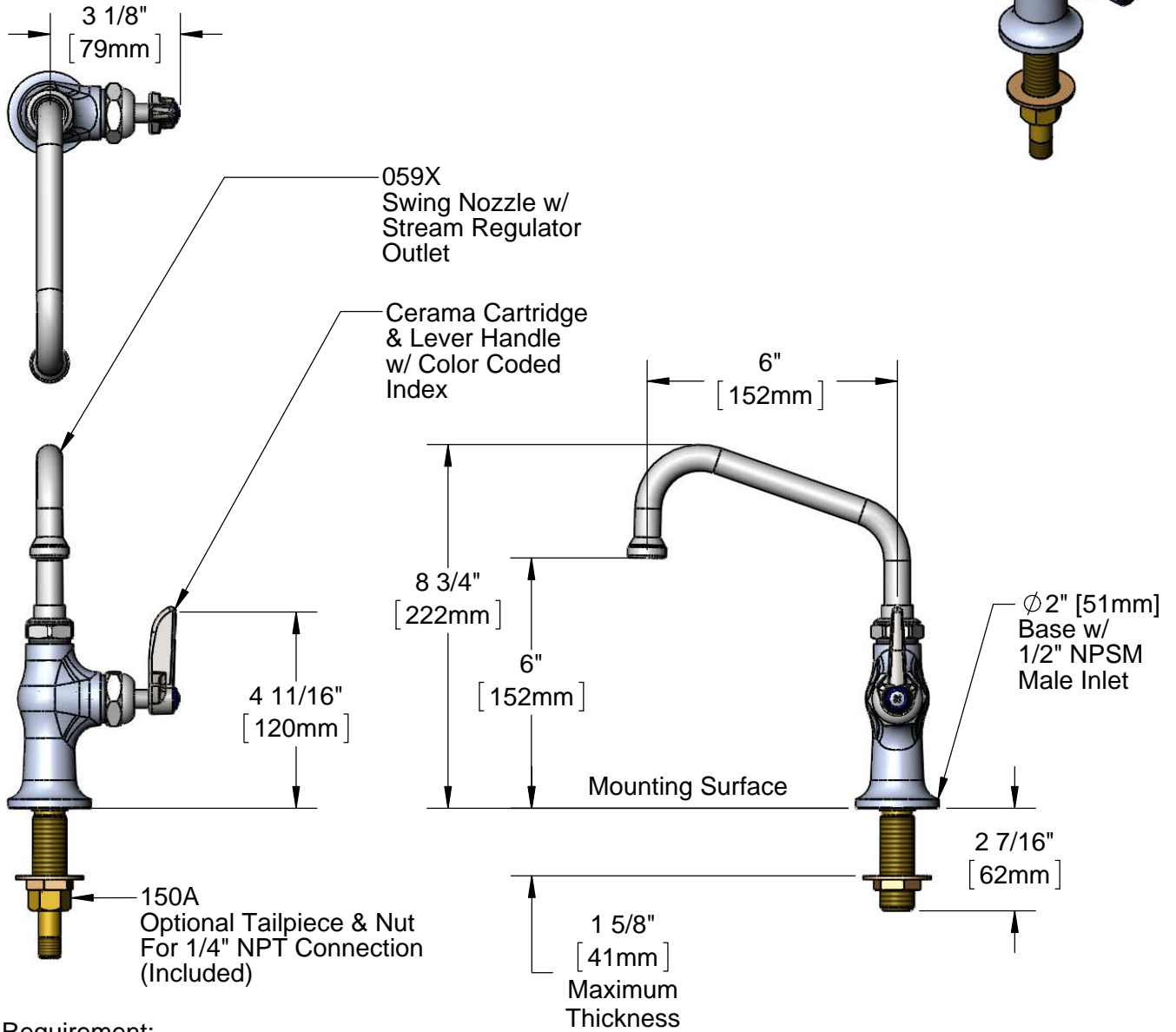
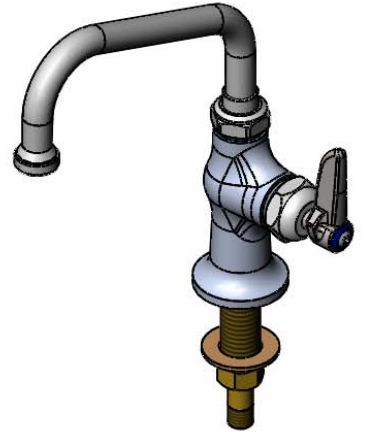
Customer/Wholesaler _____

Contractor _____

Architect/Engineer _____



ADA Compliant



Rough-In Requirement:
 Ø1" [Ø 25mm] Mounting Hole

Product Specifications:
 Single Pantry Faucet w/ Cerama Cartridge, Lever Handle,
 6" Swing Nozzle w/ Stream Regulator Outlet & 1/2" NPSM Male Inlet

Drawn DHL	Checked DMH	Approved JHB
Scale: 1:4		Date: 05/22/13

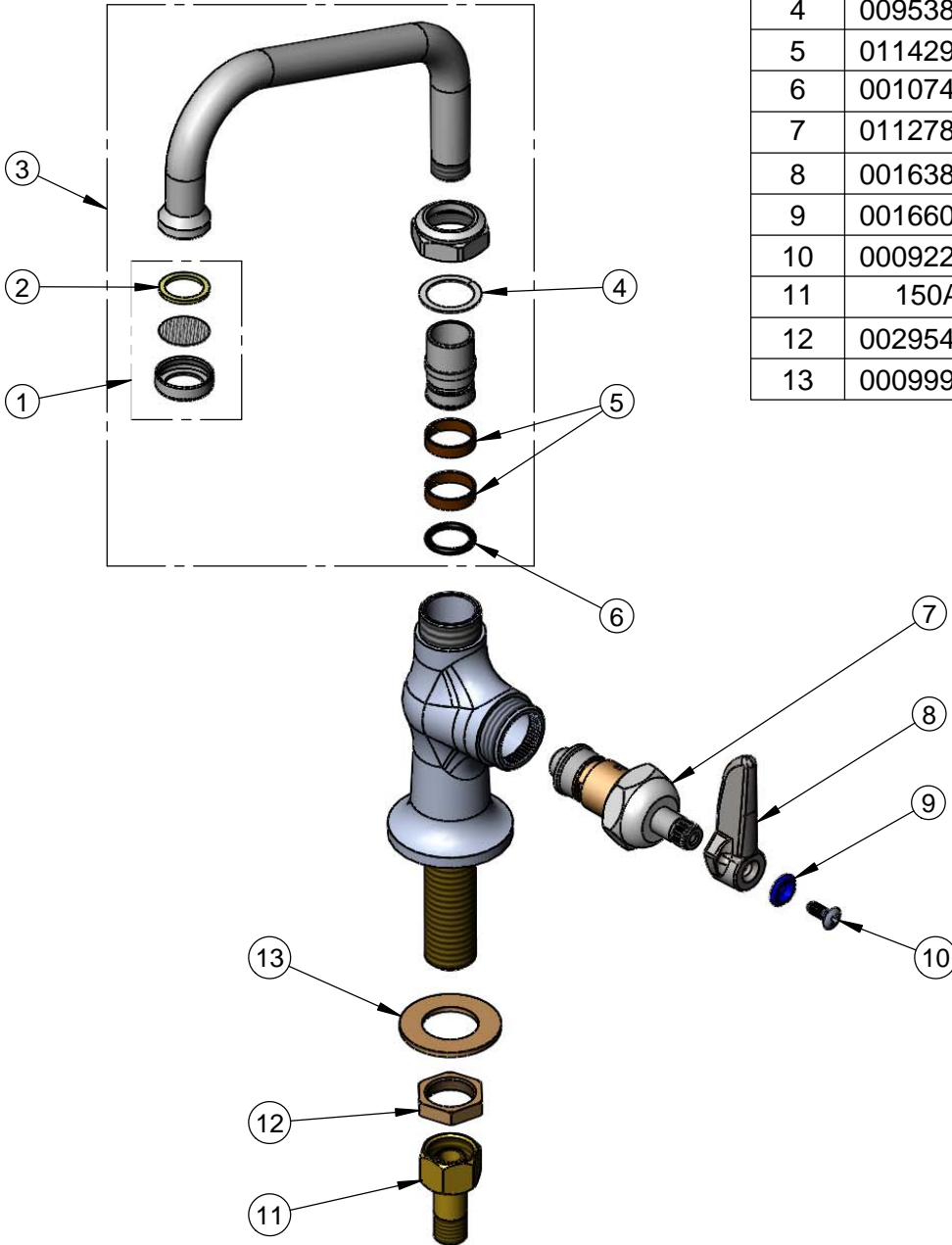


T&S BRASS AND BRONZE WORKS, INC.
 2 Saddleback Cove / P.O. Box 1088
 Travelers Rest, SC 29690

Model No.
B-0207-CR
 Item No.

Travelers Rest, SC: 800-476-4103 • Simi Valley, CA: 800-423-0150 • Fax: 864-834-3518 • www.tsbrass.com

ITEM NO.	SALES NO.	DESCRIPTION
1	B-PT	Stream Regulator Outlet
2	001048-45	Nozzle Tip Washer
3	059X	6" Swing Nozzle
4	009538-45	Swivel Washer
5	011429-45	Swivel Sleeves (2)
6	001074-45	O-Ring
7	011278-25	Cerama Cartridge, RTC
8	001638-45	Lever Handle
9	001660-45	Blue Index-CW
10	000922-45	Lever Handle Screw
11	150A	Bag of (1) Nut & (1) Tailpiece
12	002954-45	Shank Lock Nut
13	000999-45	Brass Lock Washer



Product Specifications:
 Single Pantry Faucet w/ Cerama Cartridge, Lever Handle,
 6" Swing Nozzle w/ Stream Regulator Outlet & 1/2" NPSM Male Inlet

Drawn DHL	Checked DMH	Approved JHB
Scale: NTS		Date: 05/22/13