



T&S BRASS AND BRONZE WORKS, INC.

2 Saddleback Cove / P.O. Box 1088
Travelers Rest, SC 29690



REG. #A2601
ISO #9001

Model No.

B-0232

Item No.

Travelers Rest, SC: 800-476-4103 • Simi Valley, CA: 800-423-0150 • Fax: 864-834-3518 • www.tsbrass.com

This Space for Architect/Engineer Approval

Job Name _____ Date _____

Model Specified _____ Quantity _____

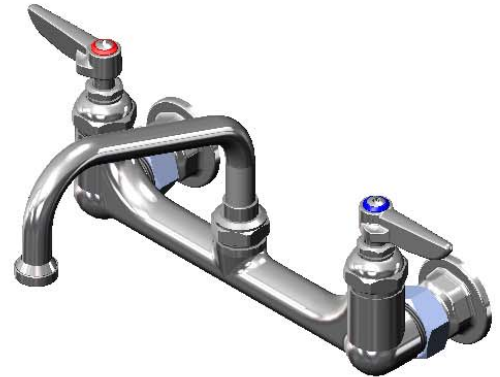
Customer/Wholesaler _____

Contractor _____

Architect/Engineer _____

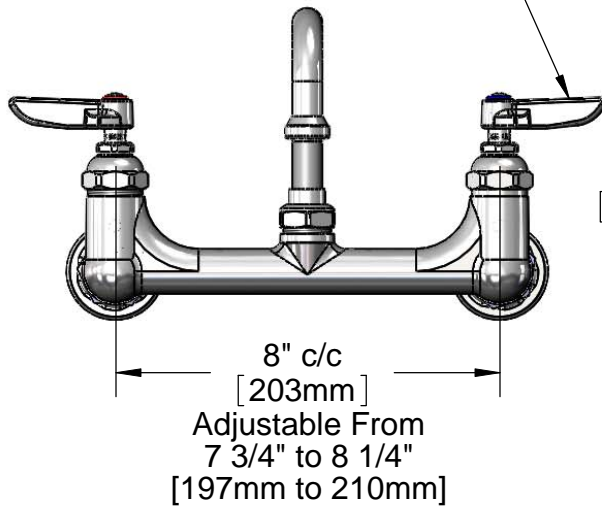


ADA Compliant

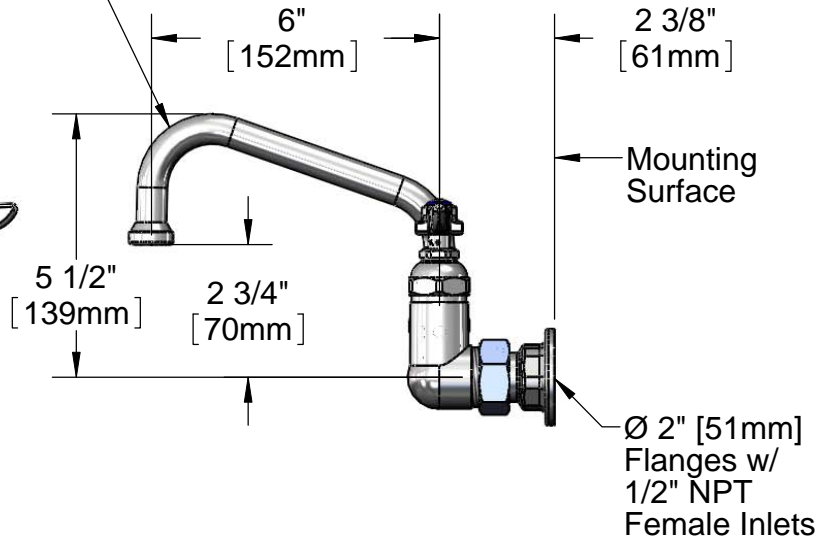


059X
6" Swing Nozzle w/
B-PT
Stream Regulator Outlet

Eterna Cartridges &
Lever Handles w/
Color Coded Indexes



8" c/c
[203mm]
Adjustable From
7 3/4" to 8 1/4"
[197mm to 210mm]



5 1/2"
[139mm]

2 3/4"
[70mm]

6"
[152mm]

2 3/8"
[61mm]

Mounting
Surface

Ø 2" [51mm]
Flanges w/
1/2" NPT
Female Inlets

Note: Rough-In Requirement
(2) Ø 1" [25mm] Mounting Holes

Product Specifications:
Sink Mixing Faucet w/ Eterna Cartridges, 6" Swing Nozzle
w/ B-PT Stream Regulator Outlet, Lever Handles & 1/2"
Female Inlets

Drawn
DHL

Checked
KJG

Approved
JHB

Scale:
1:4

Date:
04/11/11



T&S BRASS AND BRONZE WORKS, INC.

2 Saddleback Cove / P.O. Box 1088
Travelers Rest, SC 29690



REG. #A2601
ISO #9001

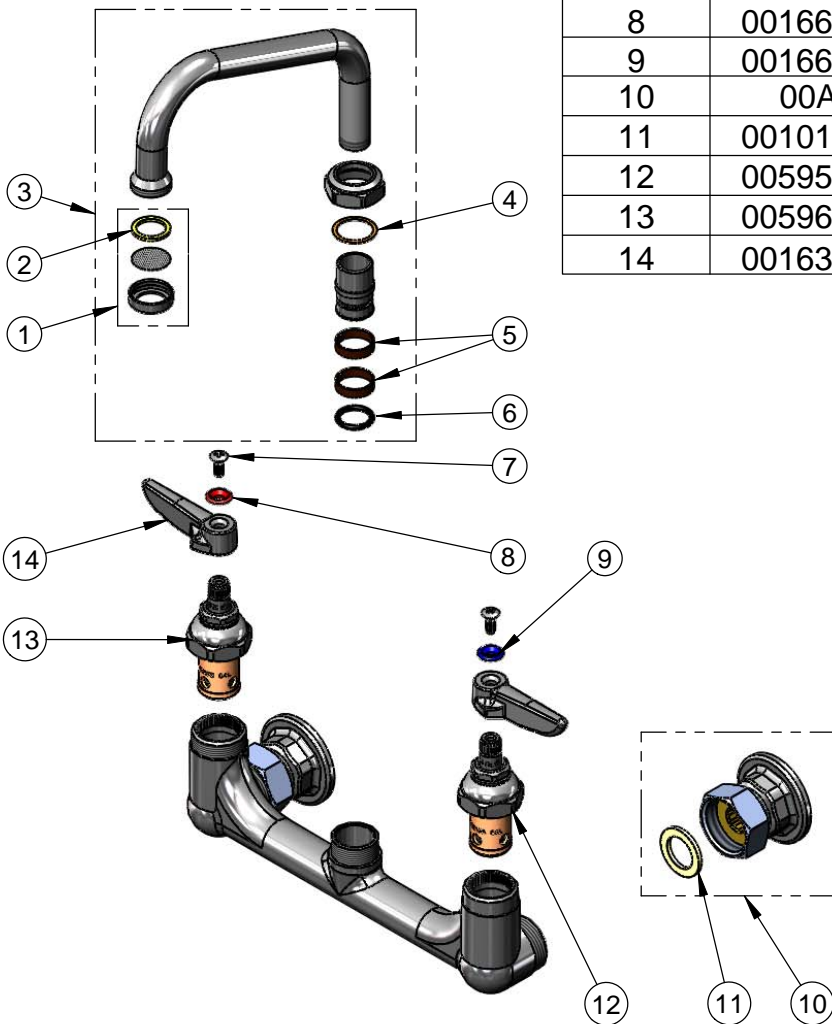
Model No.

B-0232

Item No.

Travelers Rest, SC: 800-476-4103 Simi Valley, CA: 800-423-0150 Fax: 864-834-3518 www.tsbrass.com

ITEM NO.	SALES NO.	DESCRIPTION
1	B-PT	Stream Regulator
2	001048-45	Nozzle Tip Washer
3	059X	6" Swivel Nozzle Assembly
4	009538-45	Swivel Washer
5	011429-45	Swivel Sleeves (2)
6	001074-45	O-Ring
7	000922-45	Lever Handle Screw
8	001661-45	Red Index-HW
9	001660-45	Blue Index-CW
10	00AA	1/2" NPT Female Inlet Assembly
11	001019-45	Coupling Nut Washer
12	005959-40	Eterna Cartridge - LTC
13	005960-40	Eterna Cartridge - RTC
14	001638-45	Lever Handle



Product Specifications:

Sink Mixing Faucet w/ Eterna Cartridges, 6" Swing Nozzle w/ B-PT Stream Regulator Outlet, Lever Handles & 1/2" Female Inlets

Drawn DHL	Checked KJG	Approved JHB
Scale: NTS		Date: 04/11/11