

T&S BRASS AND BRONZE WORKS, INC.
 2 SADDLEBACK COVE / P.O. BOX 1088 / TRAVELERS REST, SC 29690
 (803) 834-4102 TELEX 57-0311 FAX (803) 834-3518

Model No.
B-0233-04
Item No.:

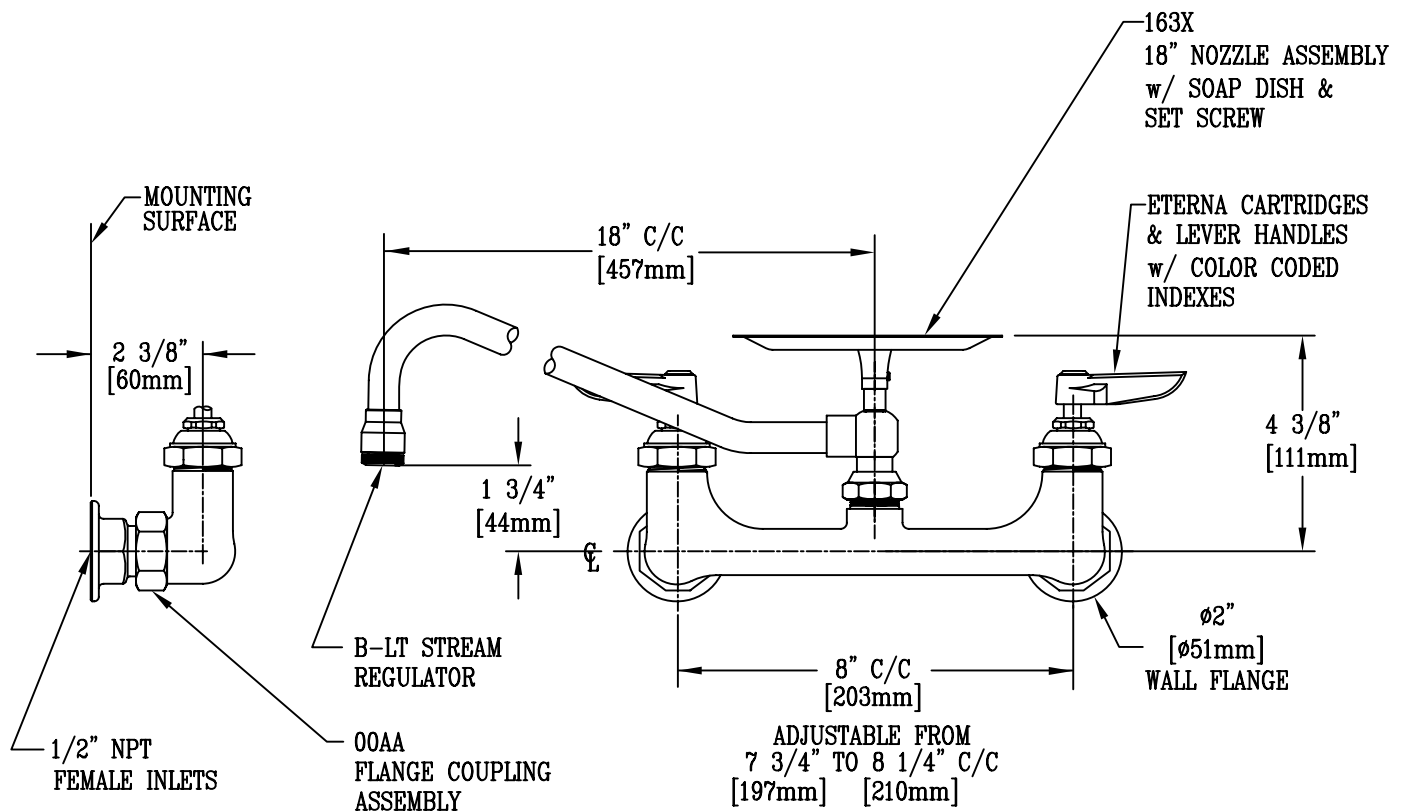
Job Name:

Architect/Engineer Approval:

Notes:



ADA COMPLIANT



NOTES:

1. SOAP DISH TURNS WITH NOZZLE.

Product Description: 8" c/c WALL MOUNT MIXING FAUCET, LEVER HANDLES, 18" NOZZLE ASSEMBLY w/ SOAP DISH ATTACHMENT, B-LT STREAM REGULATOR & 1/2" NPT FEMALE INLETS	Drawn:	Checked:	Scale:
	KJG	DHL	1:4
	Approved:	Date:	
	JHB	10/05/09	