



T&S BRASS AND BRONZE WORKS, INC.

2 Saddleback Cove / P.O. Box 1088
Travelers Rest, SC 29690



REG. #A2601
ISO #9001

Model No.
B-0236

Item No.

Travelers Rest, SC: 800-476-4103 Simi Valley, CA: 800-423-0150 Fax: 864-834-3518 www.tsbrass.com

This Space for Architect/Engineer Approval

Job Name _____ Date _____

Model Specified _____ Quantity _____

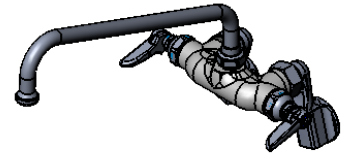
Customer/Wholesaler _____

Contractor _____

Architect/Engineer _____



ADA Compliant



Notes:

1. Nozzle Swings 360°
2. Also Available with B-0199-01 Non-splash Aerator

062X
12" Swing Nozzle
w/ Stream Regulator

Wall or Sink Back

3 1/16"
[78mm]

4 13/16"
[122mm]

12"
[305mm]

Ø 2"
[51mm]

Inlets Adjustable from
2 1/4" to 8 1/4" c/c
[57mm] [210mm]
Below or Above Centerline

1/2" NPT Female Inlet

Lever Handles w/
Color Coded Indexes

9"
[228mm]

Product Specifications:

Combination Sink Polish Chrome Faucet with 12" Swing Nozzle & Adjustable Inlet Arms

Drawn
ARH

Checked
DHL

Approved
JHB

Scale:

1:4

Date:

12/20/07



T&S BRASS AND BRONZE WORKS, INC.

2 Saddleback Cove / P.O. Box 1088
Travelers Rest, SC 29690



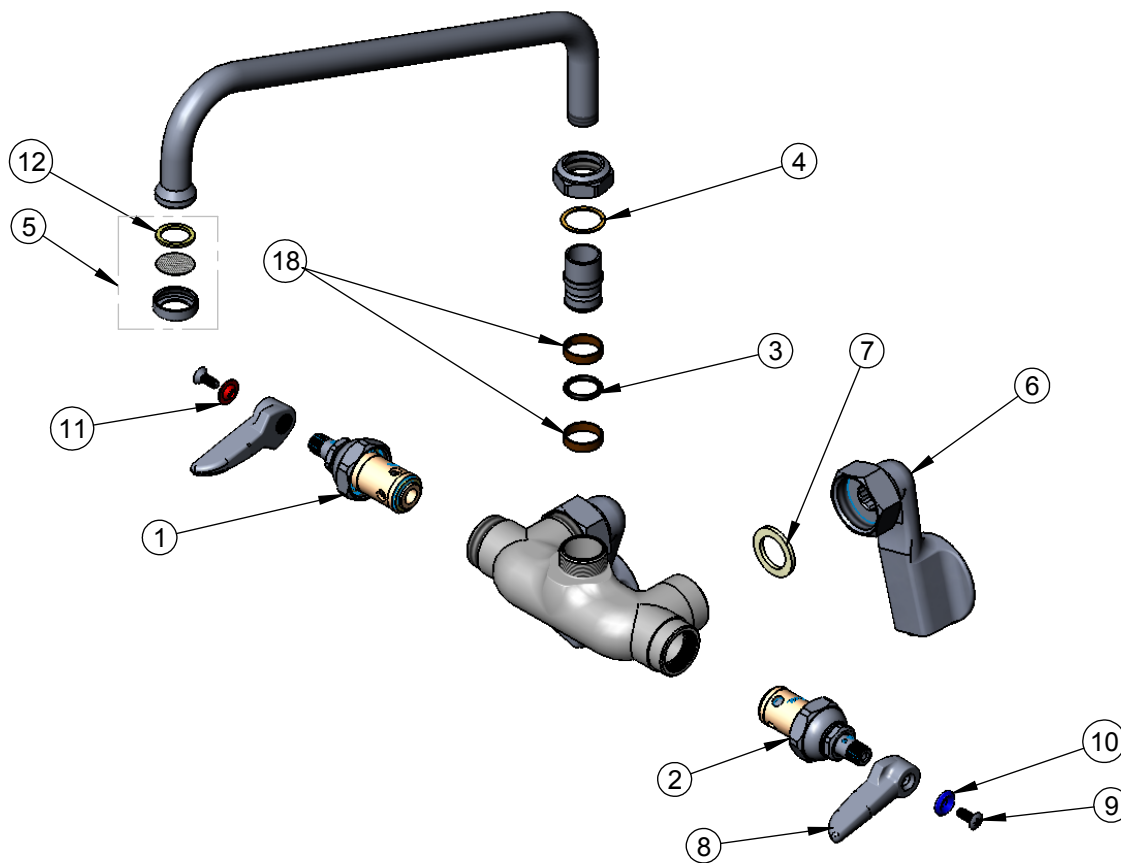
REG. #A2601
ISO #9001

Model No.
B-0236

Item No.

Travelers Rest, SC: 800-476-4103 Simi Valley, CA: 800-423-0150 Fax: 864-834-3518 www.tsbrass.com

ITEM NO.	SALES NO.	DESCRIPTION
1	005960-40	Spindle Asm, Eterna "Hot"
2	005959-40	Spindle Asm. Eterna "Cold"
3	001074-45	O-Ring
4	009538-45	Swivel Washer
5	B-PT	Stream Regulator
6	00GG	Flange Assembly, 1/2" NPT, Adjustable
7	001019-45	Washer, Coupling Nut
8	001638-45	Lever Handle
9	000922-45	Lever Handle Screw
10	001660-45	Blue Index-CW
11	001661-45	Red Index-HW
12	009638-45	Washer
18	011429-45	Swivel Sleeves (2)



Product Specifications:

Combination Sink Polish Chrome Faucet with 12" Swing
Nozzle & Adjustable Inlet Arms

Drawn ARH	Checked DHL	Approved JHB
Scale: 1:8		Date: 12/20/07