



T&S BRASS AND BRONZE WORKS, INC.

2 Saddleback Cove / P.O. Box 1088
Travelers Rest, SC 29690



REG. #A2601
ISO #9001

Model No.

B-0290-01

Item No.

Travelers Rest, SC: 800-476-4103 Simi Valley, CA: 800-423-0150

www.tsbrass.com

This Space for Architect/Engineer Approval

Job Name _____ Date _____

Model Specified _____ Quantity _____

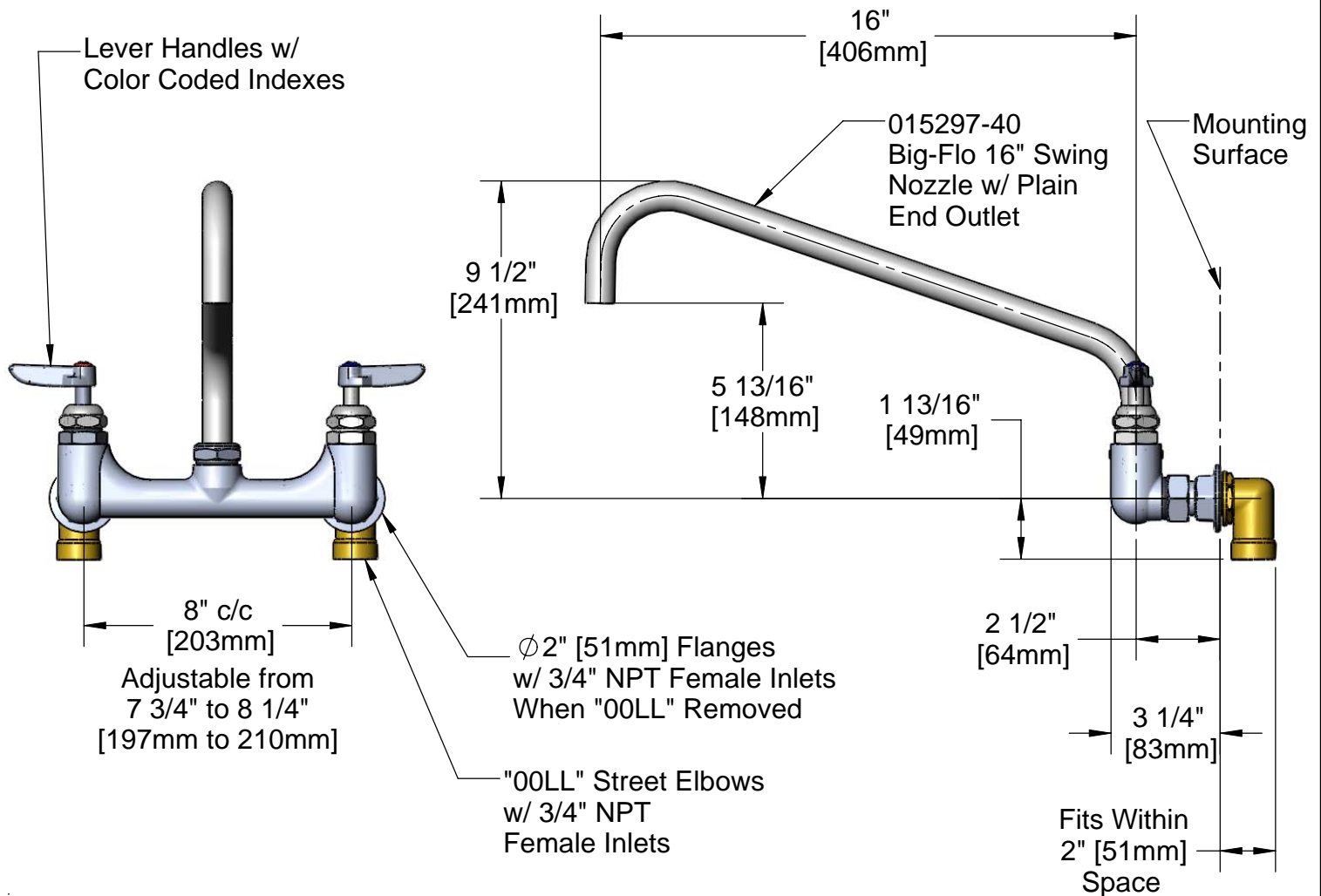
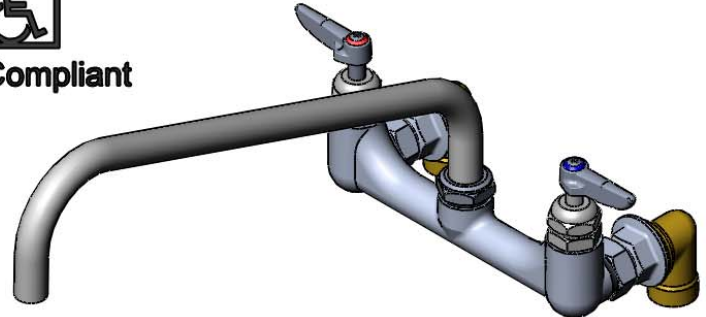
Customer/Wholesaler _____

Contractor _____

Architect/Engineer _____



ADA Compliant



Rough-In Requirements Ø 1 1/4" Holes in Mounting Surface.

Product Specifications:

Kettle & Pot Sink Mixing Faucet w/ Big-Flo 16" Swing Nozzle, Lever Handles, Color Coded Indexes & "00LL" Street Elbows

Drawn

DMH

Checked

ARH

Approved

JHB

Scale:

NTS

Date:

04/21/09

Sheet: 1 of 2



T&S BRASS AND BRONZE WORKS, INC.

2 Saddleback Cove / P.O. Box 1088
Travelers Rest, SC 29690



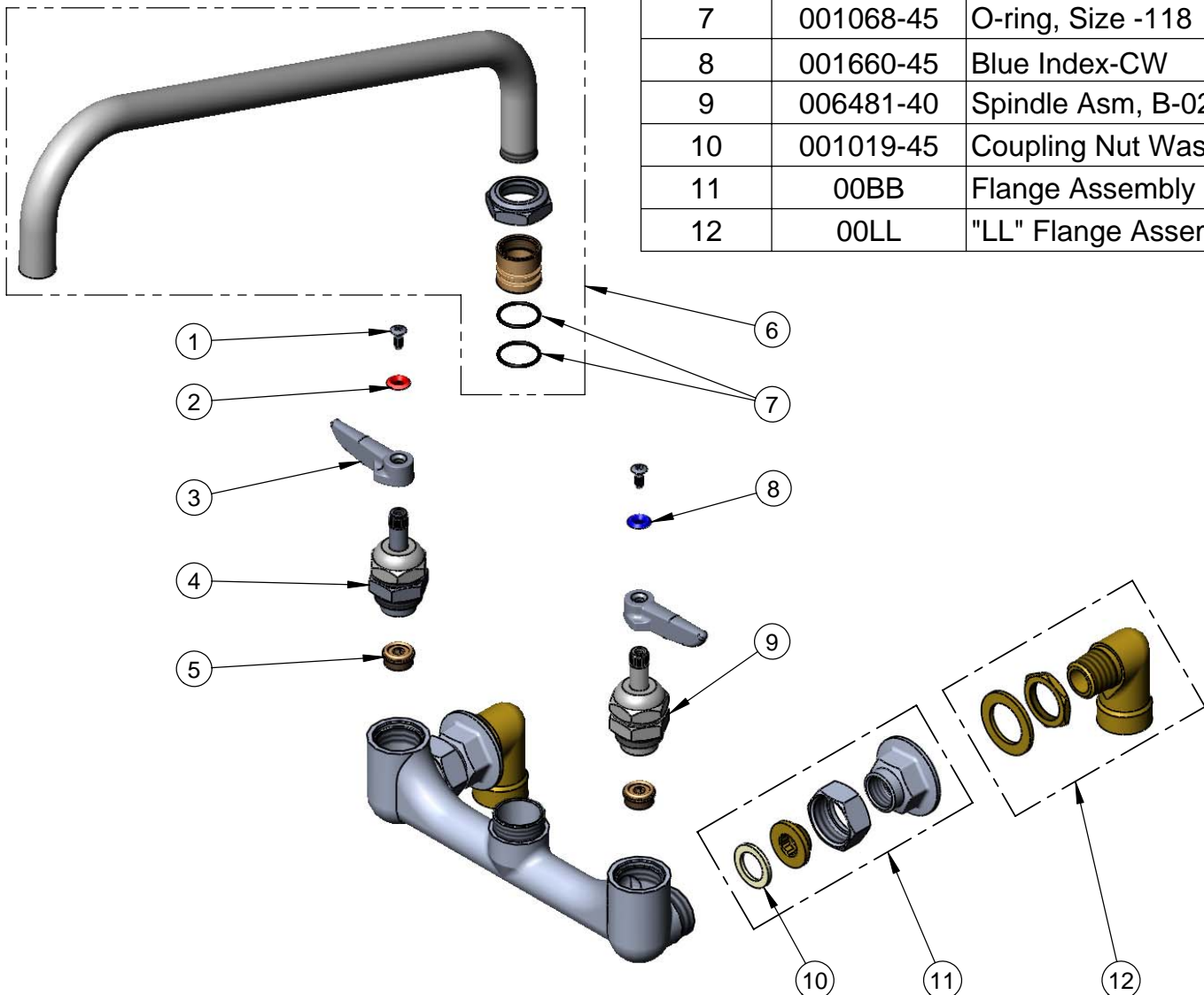
Model No.

B-0290-01

Item No.

Travelers Rest, SC: 800-476-4103 Simi Valley, CA: 800-423-0150 Fax: 864-834-3518 www.tsbrass.com

ITEM NO.	SALES NO.	DESCRIPTION
1	000922-45	Lever Handle Screw
2	001661-45	Red Index-HW
3	001638-45	Lever Handle
4	006482-40	Spindle Asm, B-0290 (RH)
5	000764-20	Seat, B-290 RM
6	015297-40	16" Big Flo Swing Nozzle
7	001068-45	O-ring, Size -118
8	001660-45	Blue Index-CW
9	006481-40	Spindle Asm, B-0290 (LH)
10	001019-45	Coupling Nut Washer
11	00BB	Flange Assembly
12	00LL	"LL" Flange Assembly



Product Specifications:

Kettle & Pot Sink Mixing Faucet w/ Big-Flo 16" Swing Nozzle,
Lever Handles, Color Coded Indexes & "00LL" Street Elbows

Drawn DMH	Checked ARH	Approved JHB
Scale: 1:4	Date: 04/21/09	