



T&S BRASS AND BRONZE WORKS, INC.

2 Saddleback Cove / P.O. Box 1088
Travelers Rest, SC 29690



REG. #A2601
ISO #9001

Model No.

B-0290-0427

Item No.

Travelers Rest, SC: 800-476-4103 Simi Valley, CA: 800-423-0150

www.tsbrass.com

This Space for Architect/Engineer Approval

Job Name _____ Date _____

Model Specified _____ Quantity _____

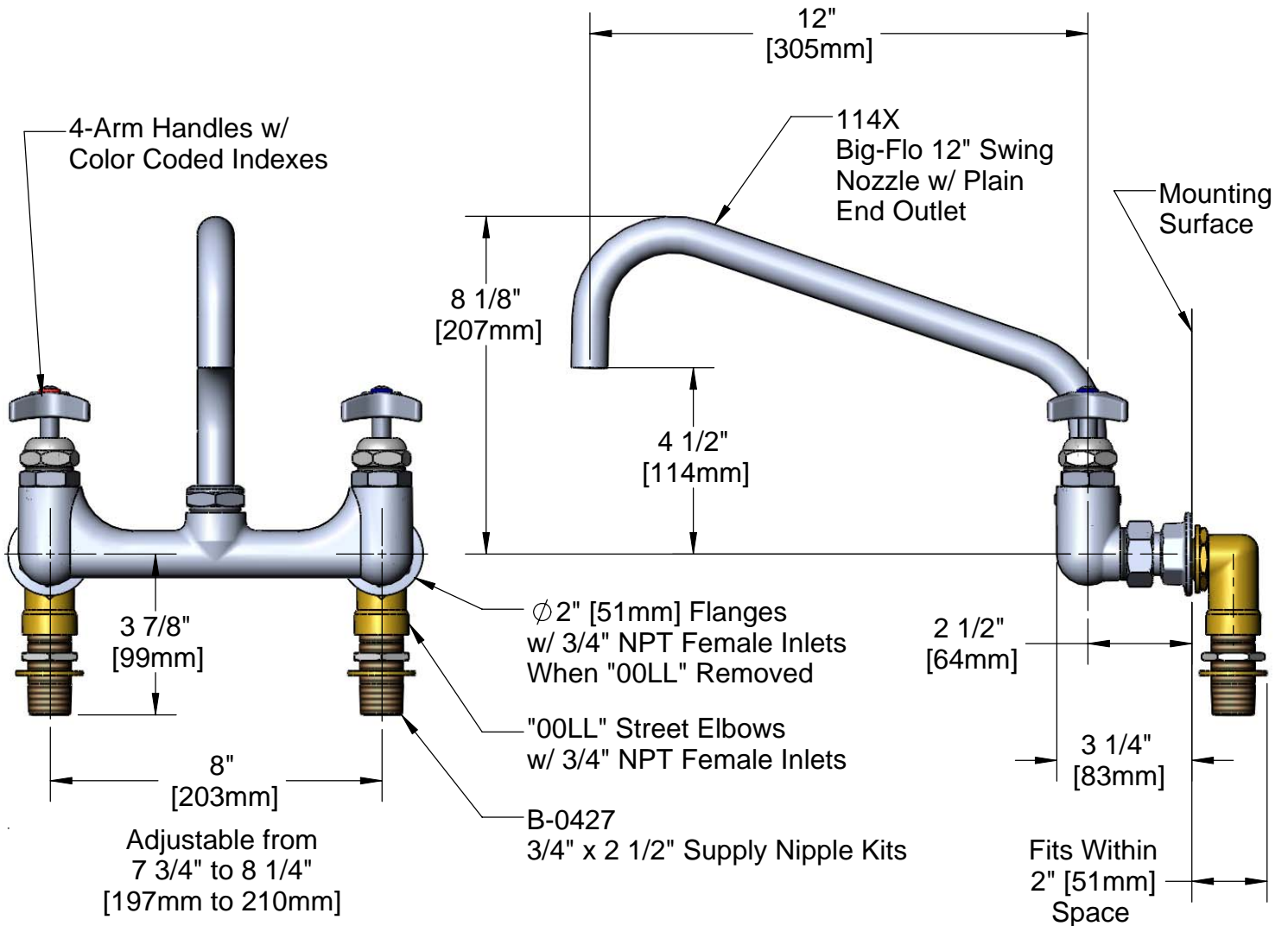
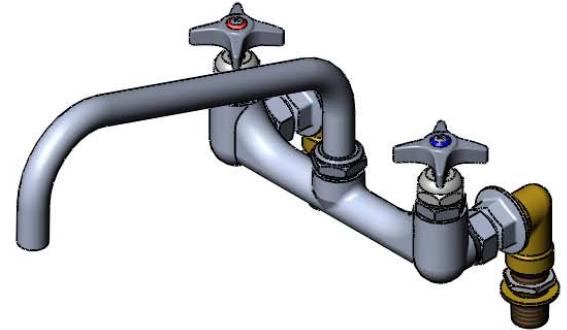
Customer/Wholesaler _____

Contractor _____

Architect/Engineer _____



ADA Compliant



Rough-In: ϕ 1 1/4" [32mm] Holes in Mounting Surface.

Product Specifications:

Kettle & Pot Sink Mixing Faucet w/ Big-Flo 12" Swing Nozzle, 4-Arm Kitchen Handles, Color Coded Indexes, "00LL" Street Elbows & B-0427 Supply Nipple Kits

Drawn DMH	Checked DHL	Approved JHB
Scale: 1:4		Date: 04/02/09



T&S BRASS AND BRONZE WORKS, INC.

2 Saddleback Cove / P.O. Box 1088
Travelers Rest, SC 29690



REG. #A2601
ISO #9001

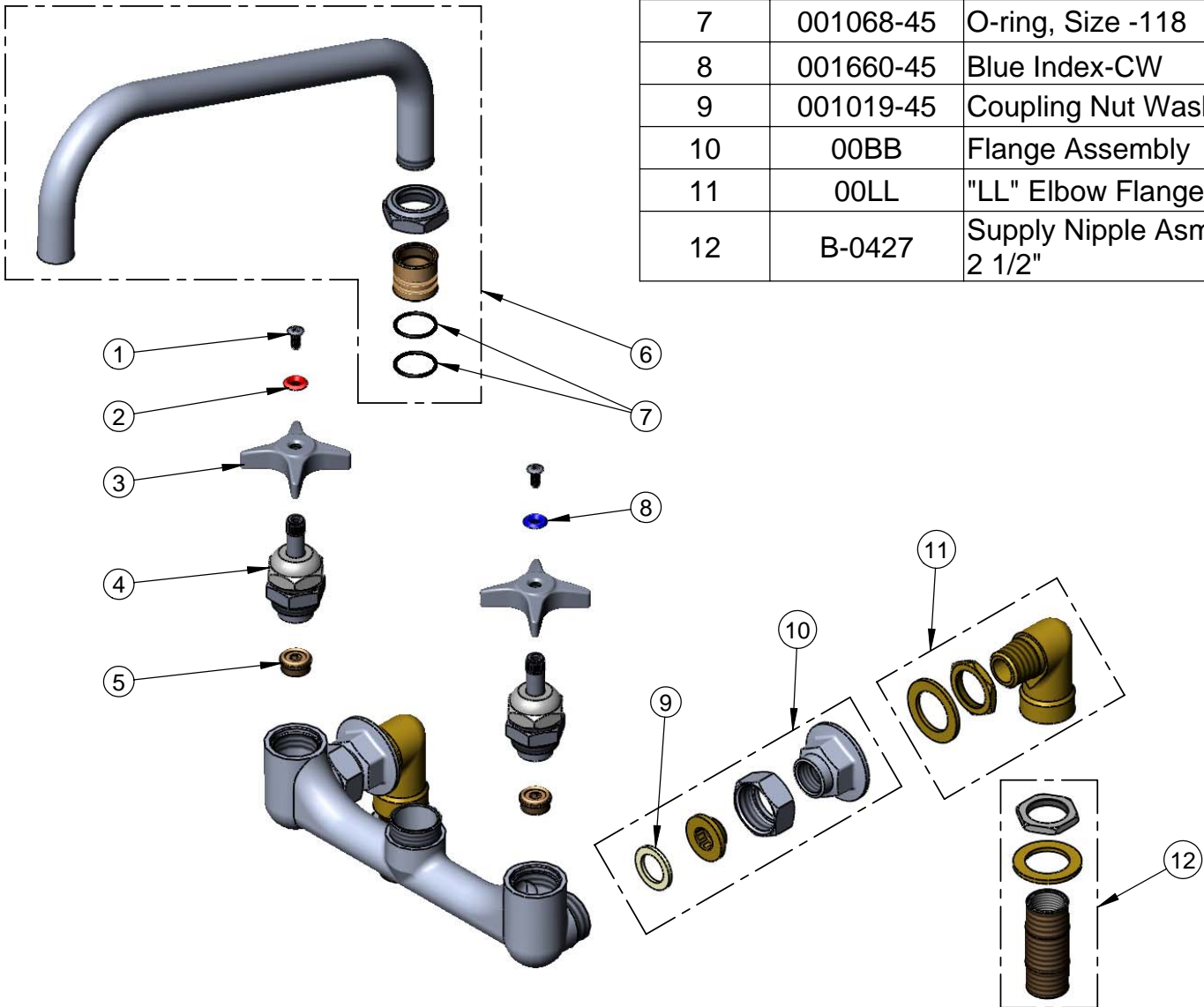
Model No.

B-0290-0427

Item No.

Travelers Rest, SC: 800-476-4103 Simi Valley, CA: 800-423-0150 Fax: 864-834-3518 www.tsbrass.com

ITEM NO.	SALES NO.	DESCRIPTION
1	000922-45	Lever Handle Screw
2	001661-45	Red Index-HW
3	002521-45	4-Arm Handle
4	006482-40	Spindle Asm, B-0290 (RH)
5	000764-20	Seat, B-290 RM
6	114X	12" Big-Flo Swing Nozzle
7	001068-45	O-ring, Size -118
8	001660-45	Blue Index-CW
9	001019-45	Coupling Nut Washer
10	00BB	Flange Assembly
11	00LL	"LL" Elbow Flange Asm
12	B-0427	Supply Nipple Asm, 3/4" x 2 1/2"



Product Specifications:

Kettle & Pot Sink Mixing Faucet w/ Big-Flo 12" Swing Nozzle, 4-Arm Kitchen Handles, Color Coded Indexes, "00LL" Street Elbows & B-0427 Supply Nipple Kits

Drawn DMH	Checked DHL	Approved JHB
Scale: 1:4		Date: 04/02/09