



**T&S BRASS AND BRONZE WORKS, INC.**

2 Saddleback Cove / P.O. Box 1088  
Travelers Rest, SC 29690



REG. #A2601  
ISO #9001

Model No.

**B-0290-14**

Item No.

Travelers Rest, SC: 800-476-4103 • Simi Valley, CA: 800-423-0150 • Fax: 864-834-3518 • www.tsbrass.com

This Space for Architect/Engineer Approval

Job Name \_\_\_\_\_ Date \_\_\_\_\_

Model Specified \_\_\_\_\_ Quantity \_\_\_\_\_

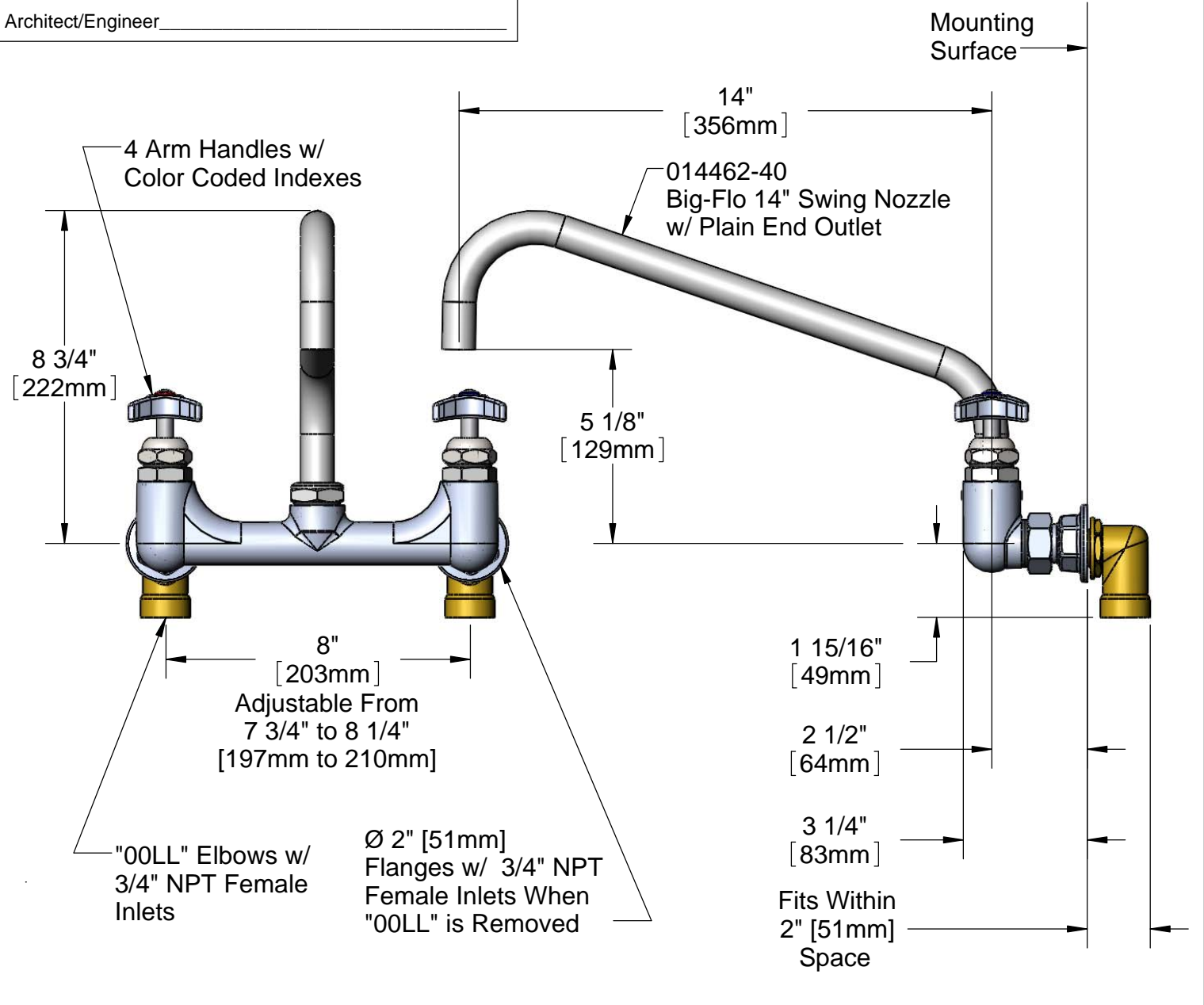
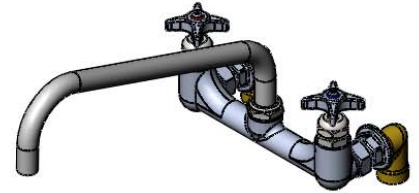
Customer/Wholesaler \_\_\_\_\_

Contractor \_\_\_\_\_

Architect/Engineer \_\_\_\_\_



**ADA Compliant**



Product Specifications:  
**8" c/c Wall Mount Mixing Faucet w/ 3/4" NPT Female Inlet Elbows & Big-Flo 14" Swivel Nozzle**

Drawn <b>DHL</b>	Checked <b>JRM</b>	Approved <b>JHB</b>
Scale: <b>1:4</b>		Date: <b>05/31/11</b>



**T&S BRASS AND BRONZE WORKS, INC.**

2 Saddleback Cove / P.O. Box 1088  
 Travelers Rest, SC 29690



REG. #A2601  
 ISO #9001

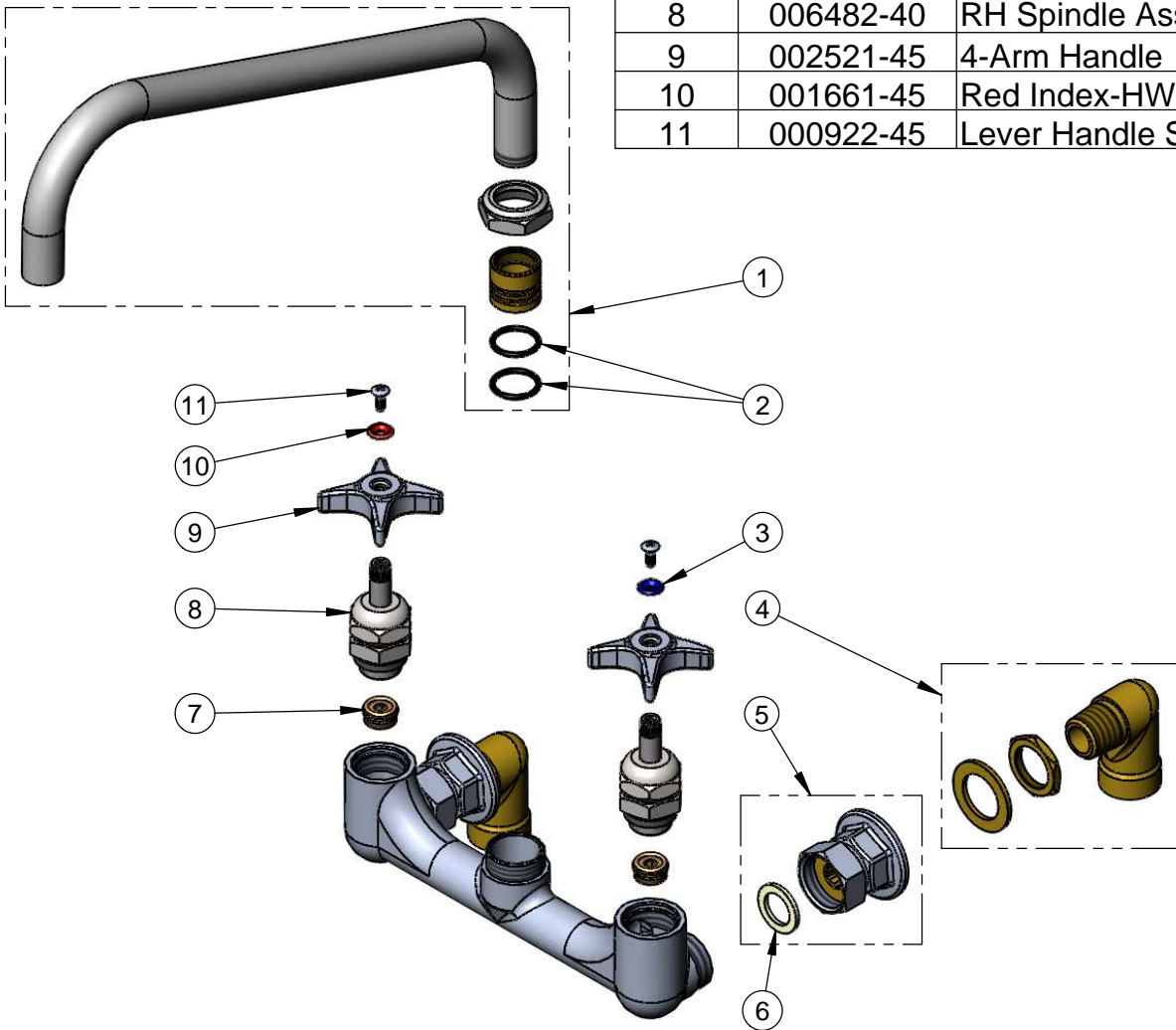
Model No.

**B-0290-14**

Item No.

Travelers Rest, SC: 800-476-4103 • Simi Valley, CA: 800-423-0150 • Fax: 864-834-3518 • www.tsbrass.com

ITEM NO.	SALES NO.	DESCRIPTION
1	014462-40	14" Big-Flo Swivel Nozzle
2	001068-45	O-ring, Size -118
3	001660-45	Blue Index-CW
4	00LL	Elbow Flange Inlet
5	00BB	3/4" NPT Inlet Flange
6	001019-45	Coupling Nut Washer
7	000764-20	Seat, B-290 RM
8	006482-40	RH Spindle Assembly
9	002521-45	4-Arm Handle
10	001661-45	Red Index-HW
11	000922-45	Lever Handle Screw



Product Specifications:

8" c/c Wall Mount Mixing Faucet w/ 3/4" NPT Female Inlet Elbows & Big-Flo 14" Swivel Nozzle

Drawn

DHL

Checked

JRM

Approved

JHB

Scale:

NTS

Date:

05/31/11