



T&S BRASS AND BRONZE WORKS, INC.

2 Saddleback Cove / P.O. Box 1088
Travelers Rest, SC 29690

Model No.

B-0290-CVH

Item No.

Travelers Rest, SC: 800-476-4103 • Simi Valley, CA: 800-423-0150 • Fax: 864-834-3518 • www.tsbrass.com

This Space for Architect/Engineer Approval

Job Name _____ Date _____

Model Specified _____ Quantity _____

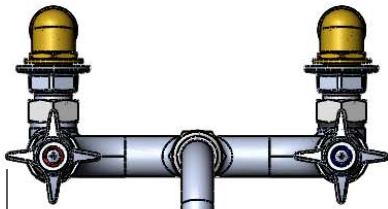
Customer/Wholesaler _____

Contractor _____

Architect/Engineer _____

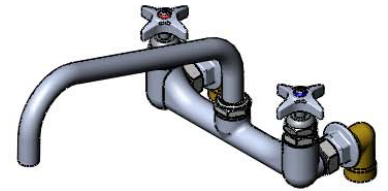


ADA Compliant



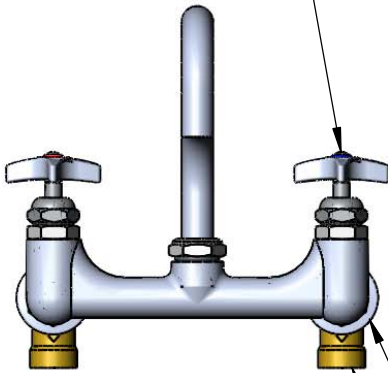
10 5/8"
[270mm]

114X
Big-Flo 12" Swing Nozzle
w/ Plain End Outlet



4-Arm Handles w/
Color Coded Indexes

12"
[305mm]



8 1/8"
[206mm]

4 7/16"
[113mm]

1 15/16"
[49mm]

Mounting
Surface

8"
[203mm]

Adjustable from
7 3/4" to 8 1/4"
[197mm to 210mm]

Ø 2" [51mm] Flanges
w/ 3/4" NPT Female Inlets
When "00LL" Removed

"00LL" Street Elbows
w/ 3/4" NPT Female Inlets

2 1/2"
[64mm]

3 1/4"
[83mm]

Fits Within
2" [51mm]
Space



(2) B-CVH3-4
3/4" NPT Female
Check Valves
Included

Product Specifications:

Kettle & Pot Sink Mixing Faucet w/ Big-Flo 12" Swing Nozzle, 4-Arm Kitchen Handles, Color Coded Indexes, Check Valves & "00LL" Street Elbows (3/4")

Drawn

KJG

Checked

DMH

Approved

JHB

Scale:

3:16

Date:

04/13/12



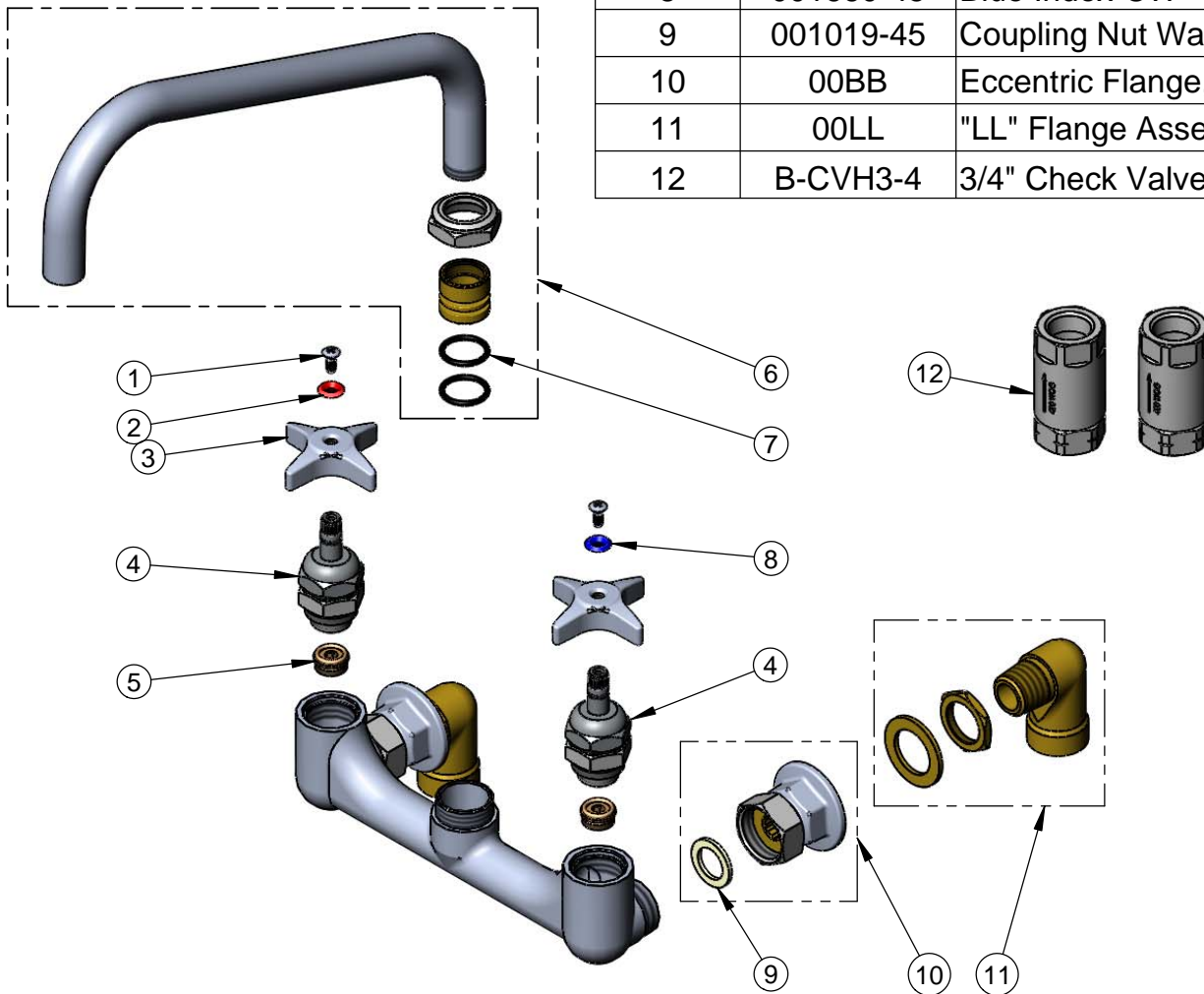
T&S BRASS AND BRONZE WORKS, INC.
 2 Saddleback Cove / P.O. Box 1088
 Travelers Rest, SC 29690

Model No.
B-0290-CVH

Item No.

Travelers Rest, SC: 800-476-4103 • Simi Valley, CA: 800-423-0150 • Fax: 864-834-3518 • www.tsbrass.com

| ITEM NO. | SALES NO. | DESCRIPTION |
|----------|-----------|-------------------------------|
| 1 | 000922-45 | Lever Handle Screw |
| 2 | 001661-45 | Red Index-HW |
| 3 | 002521-45 | 4-Arm Handle |
| 4 | 006482-40 | B-0290 Big-Flo Cartridge, RTC |
| 5 | 000764-20 | Seat, B-290 RM |
| 6 | 114X | 12" Big-Flo Swing Nozzle |
| 7 | 001068-45 | O-ring, Size -118 |
| 8 | 001660-45 | Blue Index-CW |
| 9 | 001019-45 | Coupling Nut Washer |
| 10 | 00BB | Eccentric Flange, 3/4" |
| 11 | 00LL | "LL" Flange Assembly |
| 12 | B-CVH3-4 | 3/4" Check Valve |



Product Specifications:
 Kettle & Pot Sink Mixing Faucet w/ Big-Flo 12" Swing Nozzle,
 4-Arm Kitchen Handles, Color Coded Indexes, Check Valves
 & "00LL" Street Elbows (3/4")

| | | |
|----------------------|-----------------------|--------------------------|
| Drawn KJG | Checked DMH | Approved JHB |
| Scale: NTS | | Date: 04/13/12 |