



**T&S BRASS AND BRONZE WORKS, INC.**

2 Saddleback Cove / P.O. Box 1088  
Travelers Rest, SC 29690

Model No.

**B-0300-102A-CR**

Item No.

Travelers Rest, SC: 800-476-4103 • Simi Valley, CA: 800-423-0150 • Fax: 864-834-3518 • www.tsbrass.com

This Space for Architect/Engineer Approval

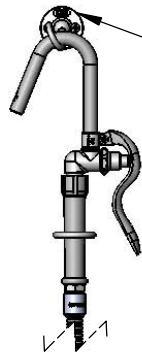
Job Name \_\_\_\_\_ Date \_\_\_\_\_

Model Specified \_\_\_\_\_ Quantity \_\_\_\_\_

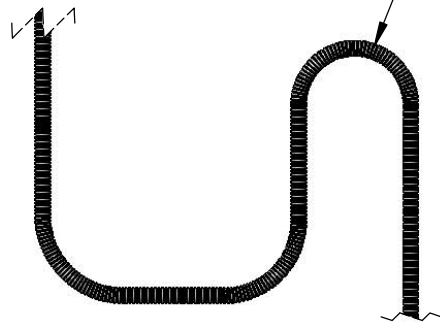
Customer/Wholesaler \_\_\_\_\_

Contractor \_\_\_\_\_

Architect/Engineer \_\_\_\_\_



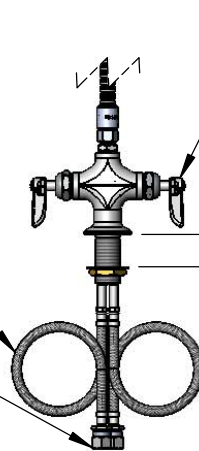
B-0104-D Hose Hanger



B-0102-A  
68" SS Flex Hose  
w/ Hook Nozzle  
Spray Valve  
Connects to Base  
Faucet w/ 053A  
Adapter

18" Long Flexible  
Stainless Steel  
Supply Hose

Compression Fittings  
for 5/8" O.D. Copper Tubing  
(Remove Compression Nut  
for 1/2" NPSM Male)



Cerama Cartridges w/  
Check Valves  
& Lever Handles w/  
Color Coded Indexes

Mounting  
Surface

1 1/4"  
[32mm]  
Max Thickness

Rough-In Requirement:  
Ø 1 1/2" [38mm] Mounting Hole

Product Specifications:

Single Hole Deck Mount Mixing Faucet w/ Flexible Hose  
Connectors, Lever Handles, Cerama Cartridges w/ Check  
Valves & B-0102-A Spray Valve & 68" SS Flex Hose

Drawn

JRM

Checked

GEF

Approved

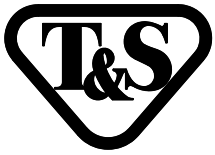
JHB

Scale:

1:9

Date:

05/02/12



# T&S BRASS AND BRONZE WORKS, INC.

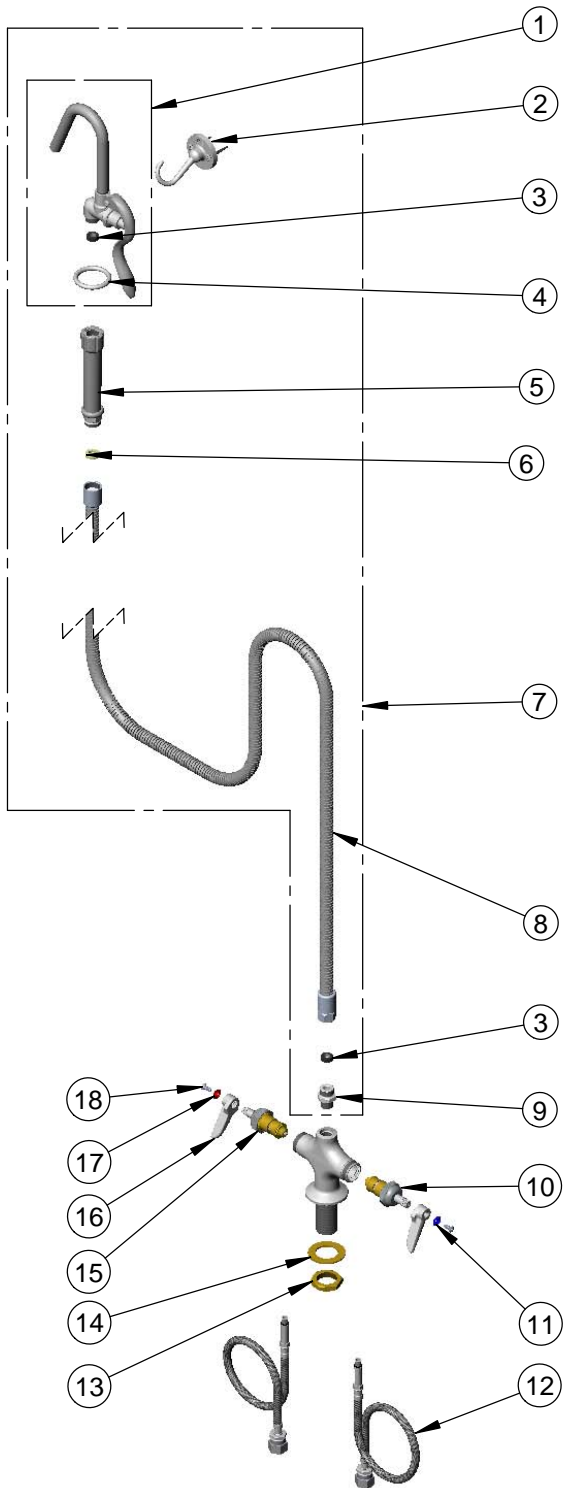
2 Saddleback Cove / P.O. Box 1088  
Travelers Rest, SC 29690

Model No.

**B-0300-102A-CR**

Item No.

Travelers Rest, SC: 800-476-4103 • Simi Valley, CA: 800-423-0150 • Fax: 864-834-3518 • www.tsbrass.com



ITEM NO.	SALES NO.	DESCRIPTION
1	002851-40	B-0187 Spray Valve & Hook Nozzle Assembly
2	B-0104-D	Wall Bracket Flange Body
3	010476-45	#27 Washer
4	000907-45	Spray Valve Hold Down Ring
5	002987-40	Grey Handle Assembly
6	01014-45	Washer, B-0100 Hose Barrel
7	B-0102A	68" SS Flex Hose w/ Hook Nozzle Spray Valve
8	B-0068-H2A	68" SS Flex Hose w/o Handle
9	053A	Adapter, 3/8" NPT x 3/4"-14 UNS
10	011311-25	Cerama Cartridge LTC w/ Check Valve
11	001660-45	Blue Index-CW
12	012534-45	Flexible Connector Hose (2)
13	000965-45	Lock Nut
14	002290-45	Lock Washer
15	011312-25	Cerama Cartridge RTC w/ Check Valve
16	001638-45	Lever Handle
17	001661-45	Red Index-HW
18	000922-45	Lever Handle Screw

**Product Specifications:**

Single Hole Deck Mount Mixing Faucet w/ Flexible Hose Connectors, Lever Handles, Cerama Cartridges w/ Check Valves & B-0102-A Spray Valve & 68" SS Flex Hose

Drawn

JRM

Checked

GEF

Approved

JHB

Scale:

NTS

Date:

05/02/12