



T&S BRASS AND BRONZE WORKS, INC.

2 Saddleback Cove / P.O. Box 1088
Travelers Rest, SC 29690



REG. #A2601
ISO #9001

Model No.

B-0300-CR

Item No.

Travelers Rest, SC: 800-476-4103 • Simi Valley, CA: 800-423-0150 • Fax: 864-834-3518 • www.tsbrass.com

This Space for Architect/Engineer Approval

Job Name _____ Date _____

Model Specified _____ Quantity _____

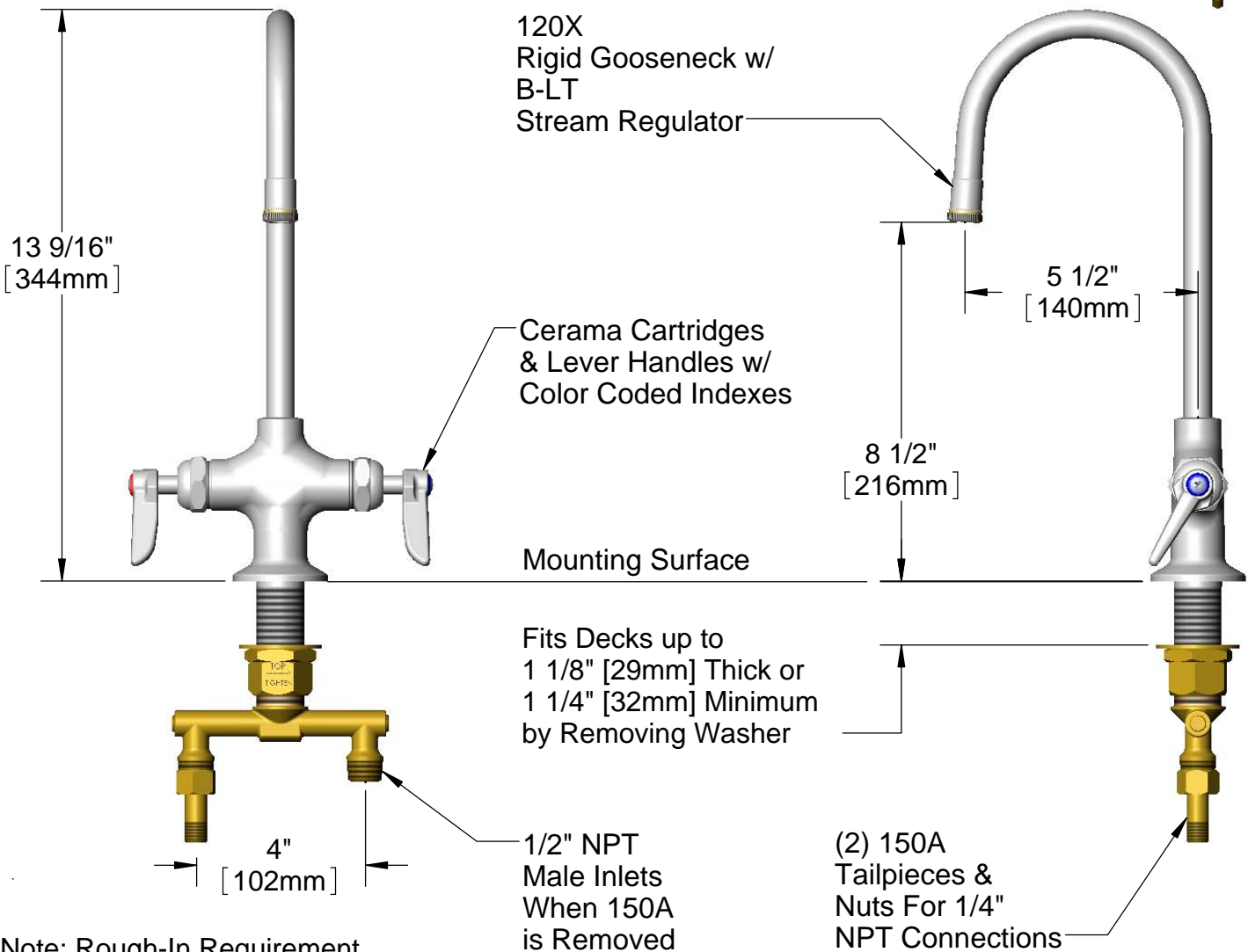
Customer/Wholesaler _____

Contractor _____

Architect/Engineer _____



ADA Compliant



Note: Rough-In Requirement
Ø 1 1/2" [38mm] Holes
Ø 1 1/4" [32mm] Minimum

Product Specifications:

Single Hole Deck Mount Mixing Faucet w/ Undercounter Spreader Assembly, Lever Handles & Rigid Gooseneck w/ Stream Regulator Outlet

Drawn

DHL

Checked

JRM

Approved

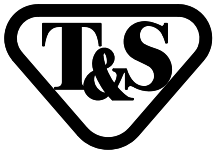
JHB

Scale:

1:4

Date:

05/31/11



T&S BRASS AND BRONZE WORKS, INC.

2 Saddleback Cove / P.O. Box 1088
Travelers Rest, SC 29690



REG. #A2601
ISO #9001

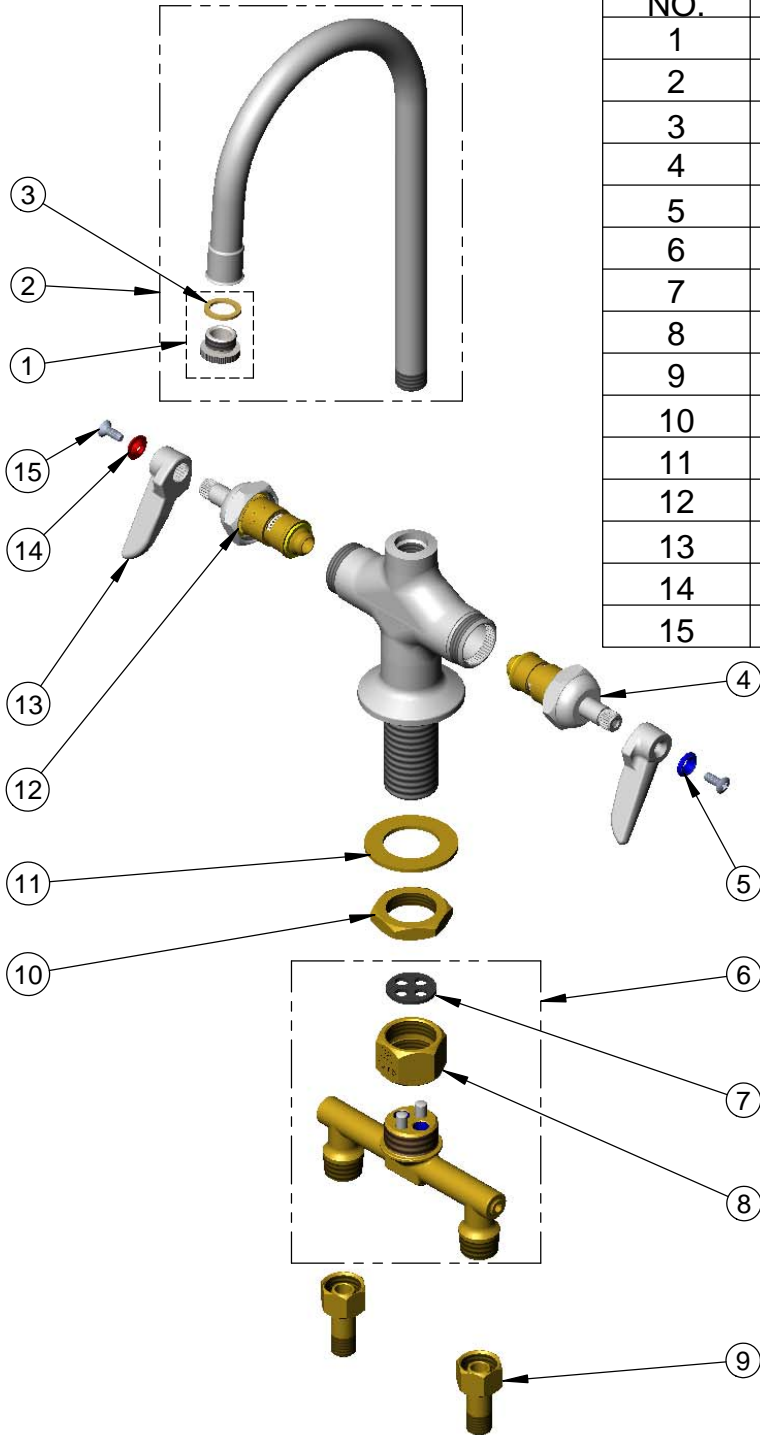
Model No.

B-0300-CR

Item No.

Travelers Rest, SC: 800-476-4103 • Simi Valley, CA: 800-423-0150 • Fax: 864-834-3518 • www.tsbrass.com

ITEM NO.	SALES NO.	DESCRIPTION
1	B-LT	Stream Regulator Outlet
2	120X	Rigid Gooseneck, 5 1/2" Spread
3	001043-45	Washer
4	011279-25	Cerama Cartridge - LTC
5	001660-45	Blue Index-CW
6	002898-40	4" Spreader Unit
7	001041-45	Spreader Washer
8	000736-20	Spreader Coupler Nut
9	150A	Bag of (1) Nut & (1) Tailpiece
10	000965-45	Lock Nut
11	002290-45	Lock Washer
12	011278-25	Cerama Cartridge - RTC
13	001638-45	Lever Handle
14	001661-45	Red Index-HW
15	000922-45	Lever Handle Screw



Product Specifications:

Single Hole Deck Mount Mixing Faucet w/ Undercounter Spreader Assembly, Lever Handles & Rigid Gooseneck w/ Stream Regulator Outlet

Drawn

DHL

Checked

JRM

Approved

JHB

Scale:

NTS

Date:

05/31/11