



T&S BRASS AND BRONZE WORKS, INC.

2 Saddleback Cove / P.O. Box 1088
Travelers Rest, SC 29690



REG. #A2601
ISO #9001

Model No.
B-0300

Item No.

Travelers Rest, SC: 800-476-4103 Simi Valley, CA: 800-423-0150 Fax: 864-834-3518 www.tsbrass.com

This Space for Architect/Engineer Approval

Job Name _____ Date _____

Model Specified _____ Quantity _____

Customer/Wholesaler _____

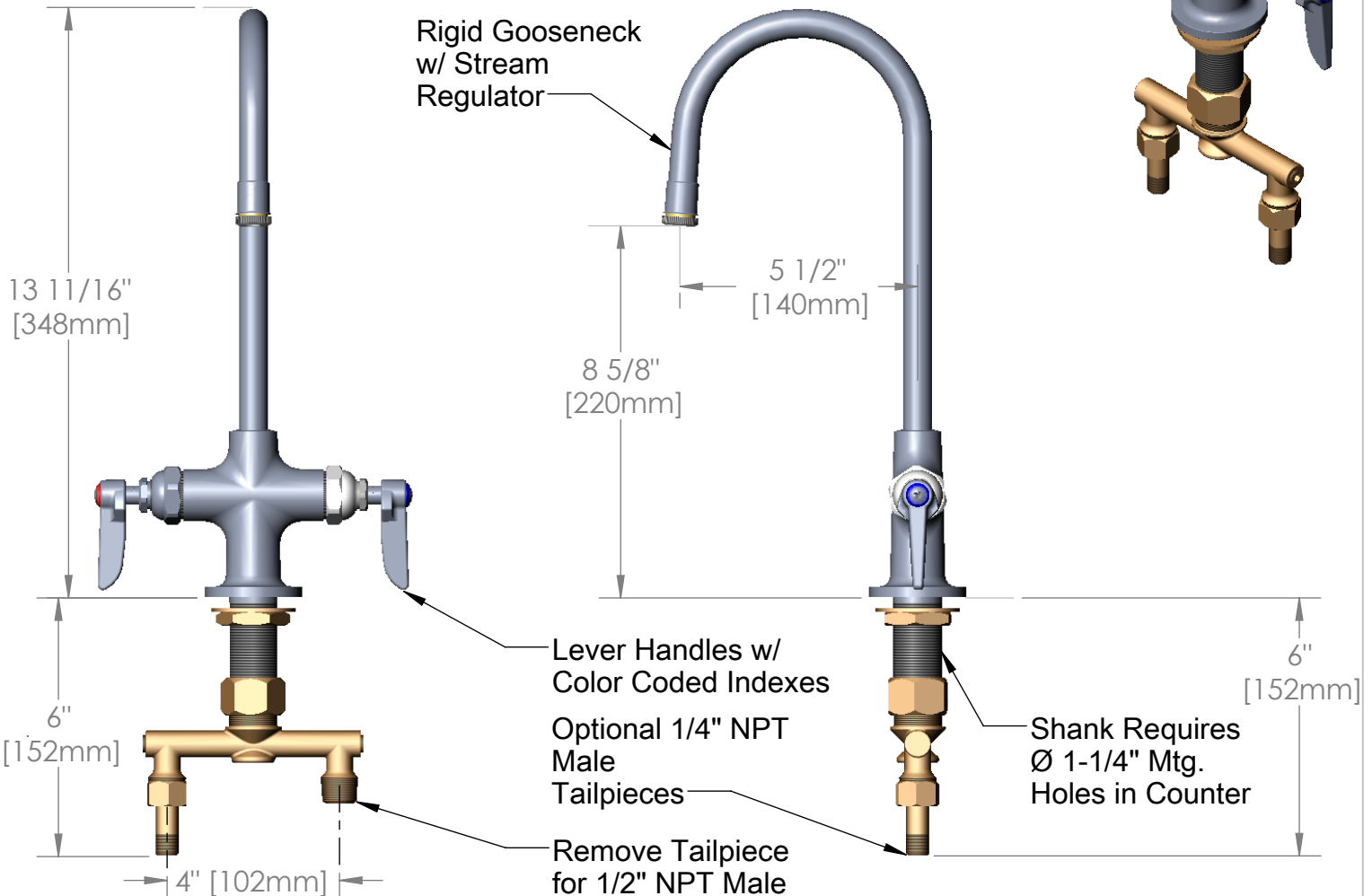
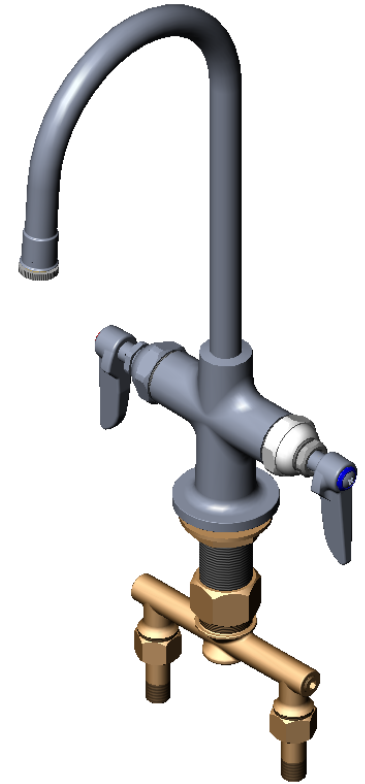
Contractor _____

Architect/Engineer _____



Variations or Applicable Options:

- WH6 6" Wrist Action Handles
- WH4 4" Wrist Action Handles
- 175F 4-Arm Kitchen Handles



Product Specifications:
Single Hole Deck Mount Mixing Faucet w/
Undercounter Spreader Assembly, Lever Handles,
and Rigid Gooseneck w/ Stream Regulator

Drawn WJS	Checked DHL	Approved JHB
Scale: 1:4	Date: 01/19/07	



T&S BRASS AND BRONZE WORKS, INC.

2 Saddleback Cove / P.O. Box 1088
Travelers Rest, SC 29690



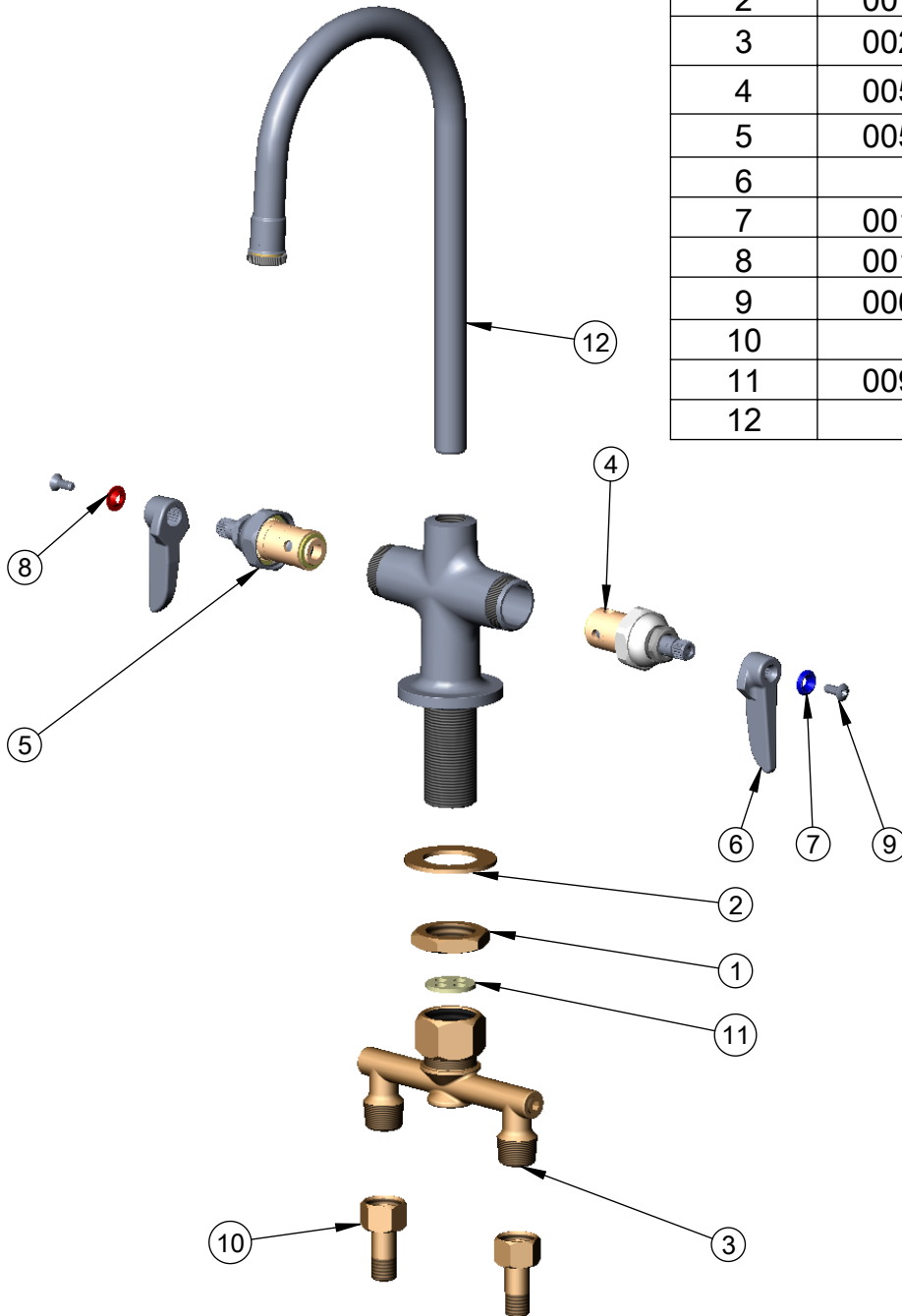
REG. #A2601
ISO #9001

Model No.
B-0300

Item No.

Travelers Rest, SC: 800-476-4103 Simi Valley, CA: 800-423-0150 Fax: 864-834-3518 www.tsbrass.com

ITEM	Sales No.	Description
1	000965-45	Lock Nut
2	007365-45	Lock Washer
3	002898-40	Spreader Assembly
4	005959-40	Eterna Spindle Asm, Cold
5	005960-40	Eterna Spindle Asm, Hot
6	177F	Lever Handle
7	001660-45	Blue Index-CW
8	001661-45	Red Index-HW
9	000922-45	Lever Handle Screw
10	150A	Nut & Tailpiece
11	009634-45	Spreader Washer
12	120X	Rigid GN w/ B-LT



Product Specifications:

Single Hole Deck Mount Mixing Faucet w/
Undercounter Spreader Assembly, Lever Handles,
and Rigid Gooseneck w/ Stream Regulator

Drawn WJS	Checked DHL	Approved JHB
Scale: 1:4		Date: 01/19/07