



T&S BRASS AND BRONZE WORKS, INC.

2 Saddleback Cove / P.O. Box 1088
Travelers Rest, SC 29690



REG. #A2601
ISO #9001

Model No.

B-0300

Item No.

Travelers Rest, SC: 800-476-4103 • Simi Valley, CA: 800-423-0150 • Fax: 864-834-3518 • www.tsbrass.com

This Space for Architect/Engineer Approval

Job Name _____ Date _____

Model Specified _____ Quantity _____

Customer/Wholesaler _____

Contractor _____

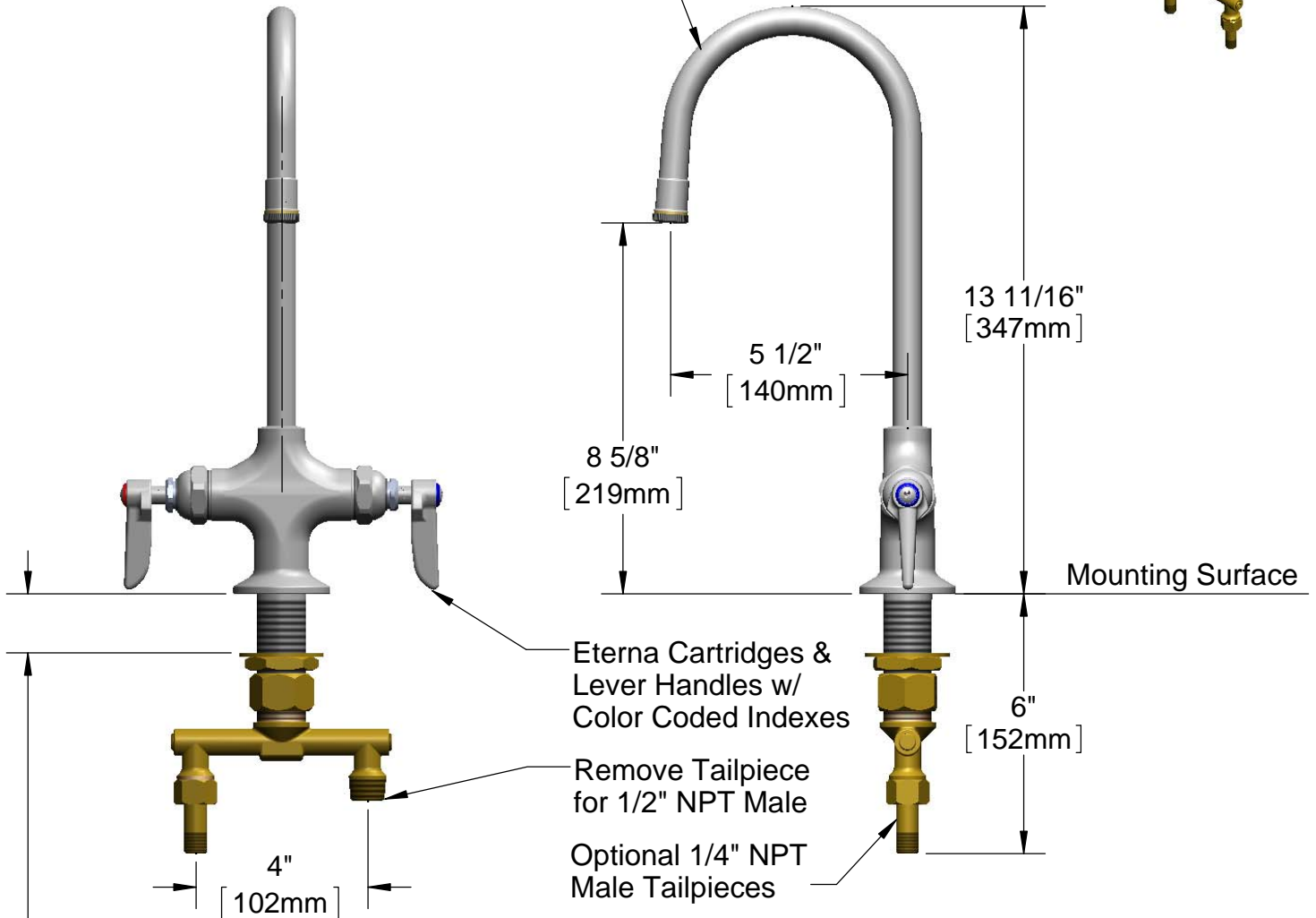
Architect/Engineer _____



ADA Compliant



Rigid Gooseneck
w/ Stream Regulator



Note: Rough-In Requirement
 $\varnothing 1\text{-}1\frac{1}{4}$ " [$\varnothing 32\text{mm}$] Hole

Product Specifications:

Single Hole Deck Mount Mixing Faucet w/
Undercounter Spreader Assembly, Lever Handles,
and Rigid Gooseneck w/ Stream Regulator

Drawn

DHL

Checked

JRM

Approved

JHB

Scale:

1:4

Date:

08-23-11



T&S BRASS AND BRONZE WORKS, INC.

2 Saddleback Cove / P.O. Box 1088
 Travelers Rest, SC 29690



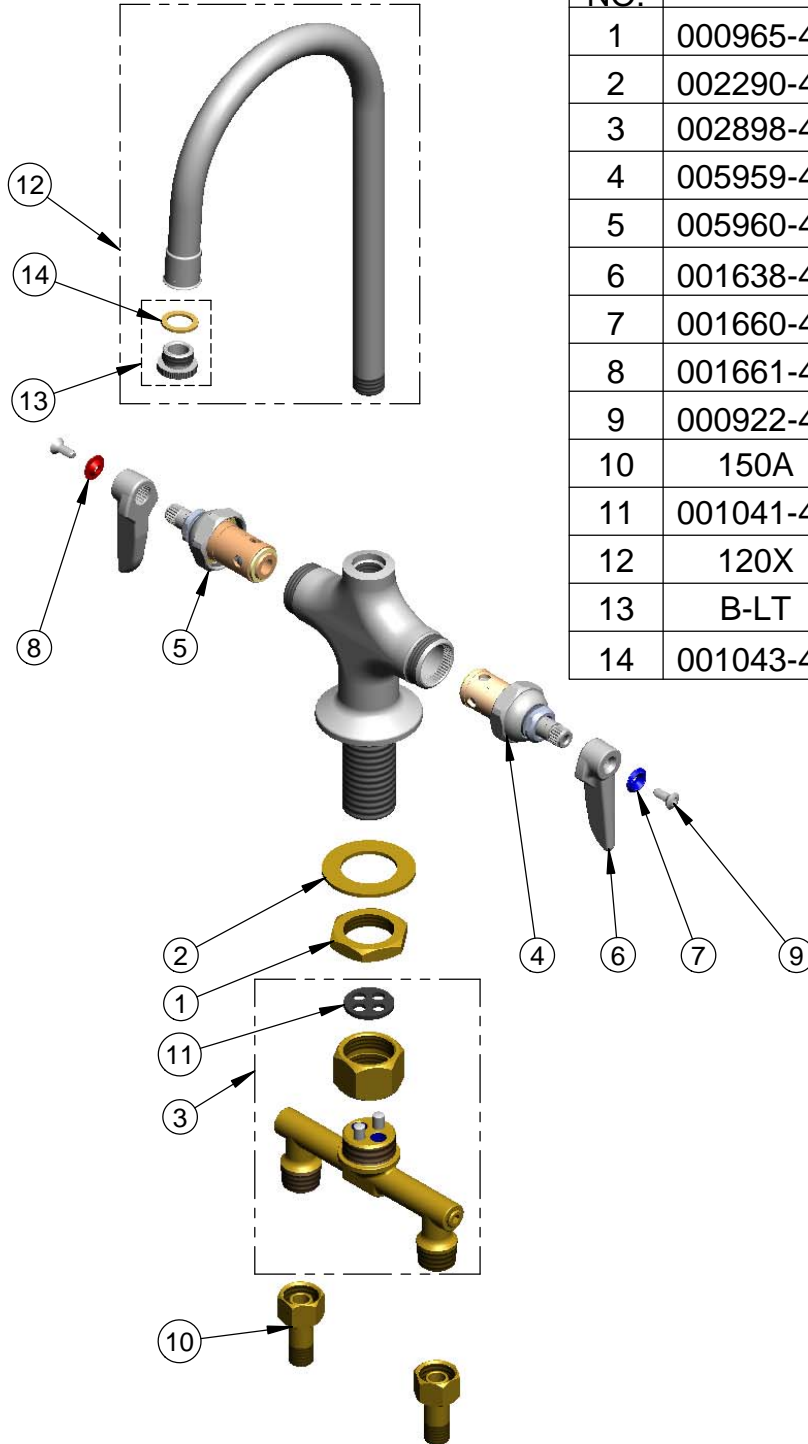
REG. #A2601
 ISO #9001

Model No.

B-0300

Item No.

Travelers Rest, SC: 800-476-4103 • Simi Valley, CA: 800-423-0150 • Fax: 864-834-3518 • www.tsbrass.com



ITEM NO.	SALES NO.	DESCRIPTION
1	000965-45	Lock Nut
2	002290-45	Lock Washer
3	002898-40	Spreader Assembly
4	005959-40	Eterna Cartridge - LTC
5	005960-40	Eterna Cartridge - RTC
6	001638-45	Lever Handle
7	001660-45	Blue Index-CW
8	001661-45	Red Index-HW
9	000922-45	Lever Handle Screw
10	150A	Bag of (1) Nut & Tailpiece
11	001041-45	Spreader Washer
12	120X	Rigid Gooseneck w/ B-LT
13	B-LT	Stream Regulator Outlet
14	001043-45	Washer

Product Specifications:
 Single Hole Deck Mount Mixing Faucet w/
 Undercounter Spreader Assembly, Lever Handles,
 and Rigid Gooseneck w/ Stream Regulator

Drawn DHL	Checked JRM	Approved JHB
Scale: NTS		Date: 08-23-11