

T&S BRASS AND BRONZE WORKS, INC.

2 Saddleback Cove / P.O. Box 1088
Travelers Rest, SC 29690

Model No.

B-0301

Item No.

Travelers Rest, SC: 800-476-4103 • Simi Valley, CA: 800-423-0150 • Fax: 864-834-3518 • www.tsbrass.com

This Space for Architect/Engineer Approval

Job Name _____ Date _____

Model Specified _____ Quantity _____

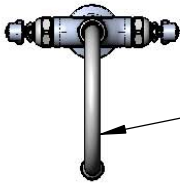
Customer/Wholesaler _____

Contractor _____

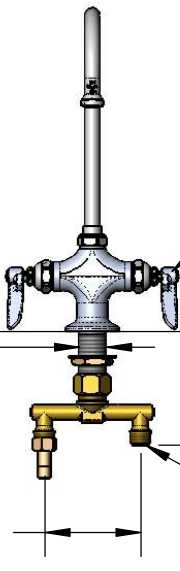
Architect/Engineer _____



ADA Compliant



133X
Swivel Gooseneck w/
B-PT Stream Regulator



Eterna Cartridges &
Lever Handles w/
Color Coded Indexes

Ø 1 1/8"
[29mm]

4 3/4"
[121mm]

Mounting Surface

Fits Decks up to
1 1/8" [29mm] Thick or
1 1/4" [32mm] Thick
By Removing Washer

1/2" NPT Male Inlets

150A
Tailpiece and Nut
Furnished for Optional
1/4" NPT Connection

9 3/8"
[238mm]

5 11/16"
[145mm]

13 1/2"
[343mm]

Ø 2 1/4"
[57mm]
Base

Note: Rough-In Requirement
Ø 1 1/2" [38mm] Mounting Hole
(Ø 1-1/4" [Ø 32mm] Minimum)

Product Specifications:
Single Hole Deck Mount Mixing Faucet w/ Eterna Cartridges,
Swivel Gooseneck w/ Stream Regulator, Lever Handles,
and Undercounter Spreader Assembly

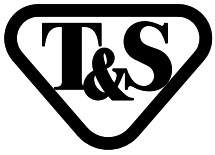
Drawn
KJG

Checked
DHL

Approved
JHB

Scale:
1:4

Date:
03/02/12



T&S BRASS AND BRONZE WORKS, INC.

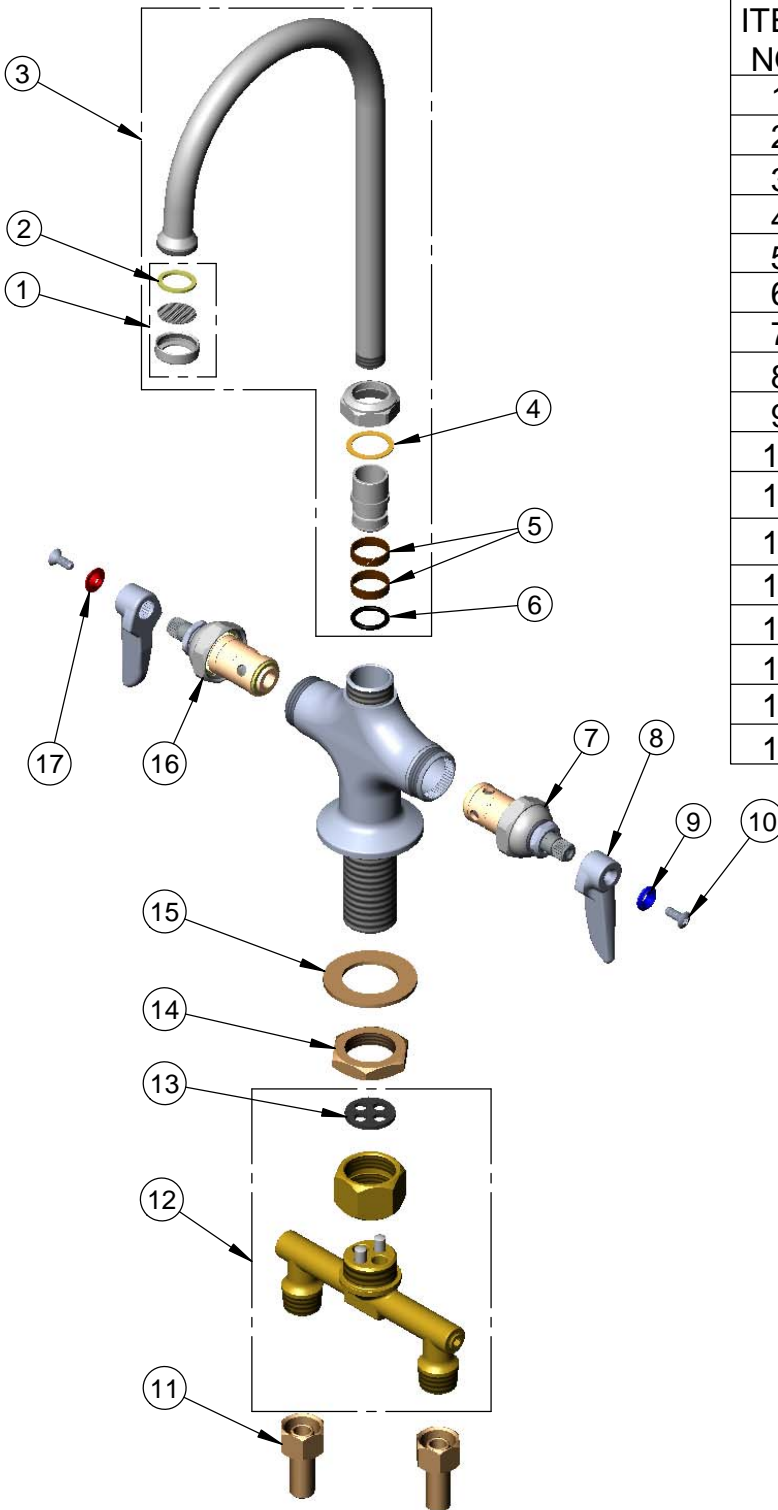
2 Saddleback Cove / P.O. Box 1088
Travelers Rest, SC 29690

Model No.

B-0301

Item No.

Travelers Rest, SC: 800-476-4103 • Simi Valley, CA: 800-423-0150 • Fax: 864-834-3518 • www.tsbrass.com



ITEM NO.	SALES NO.	DESCRIPTION
1	B-PT	Stream Regulator Outlet
2	001048-45	Nozzle Tip Washer
3	133X	Swivel Gooseneck
4	009538-45	Swivel Washer
5	011429-45	Swivel Sleeves (2)
6	001074-45	O-Ring
7	005959-40	Eterna Cartridge - LTC
8	001638-45	Lever Handle
9	001660-45	Blue Index-CW
10	000922-45	Lever Handle Screw
11	150A	Bag of (1) Nut & (1) Tailpiece
12	002898-40	Spreader Assembly
13	001041-45	Spreader Washer
14	000965-45	Lock Nut
15	002290-45	Lock Washer
16	005960-40	Eterna Cartridge - RTC
17	001661-45	Red Index-HW

Product Specifications:
Single Hole Deck Mount Mixing Faucet w/ Eterna Cartridges,
Swivel Gooseneck w/ Stream Regulator, Lever Handles,
and Undercounter Spreader Assembly

Drawn

KJG

Checked

DHL

Approved

JHB

Scale:

NTS

Date:

03/02/12