



# T&S BRASS AND BRONZE WORKS, INC.

2 SADDLEBACK COVE / P.O. BOX 1088 / TRAVELERS REST, SC 29690

PHONE 800-476-4103

FAX 864- 834-3518



REG.#A2601  
ISO #9002

Model No.

B-0331-BST

Item No.:

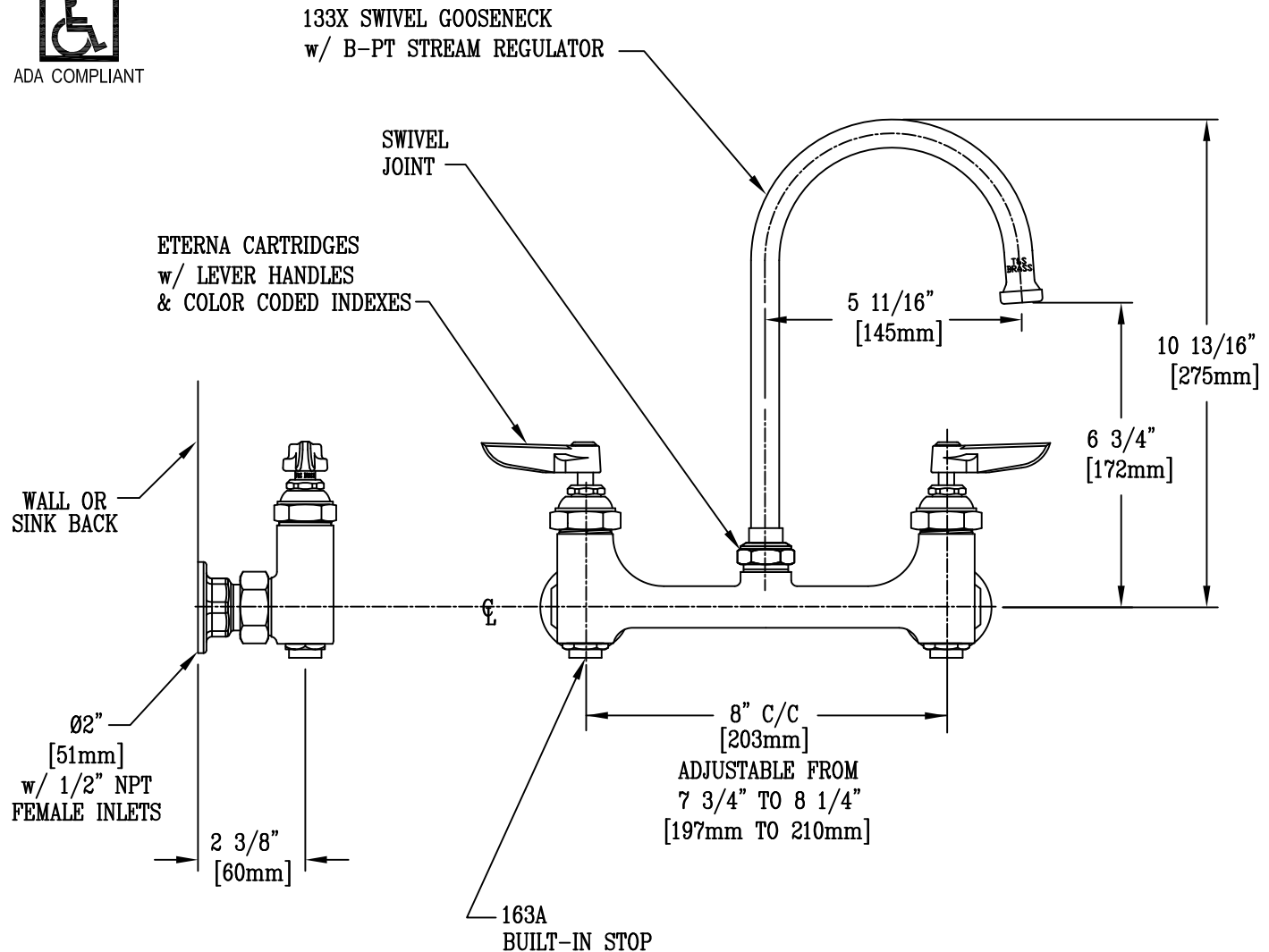
Job Name:

Architect/Engineer Approval:

Notes:



ADA COMPLIANT



## NOTES :

1. ALSO AVAILABLE WITH B-WH4" OR B-WH6"  
WRIST ACTION BLADE HANDLES.
2. ALSO AVAILABLE WITH MODEL #B-SD SOAP DISH
3. NOZZLE SWINGS 360°
4. ALSO AVAILABLE WITH B-0199-01 NON-SPLASH AERATOR.
5. BST PROVIDES INDIVIDUAL SHUT-OFF OF EACH  
VALVE WHEN MAINTENANCE IS REQUIRED.

Product Description:

8" c/c SWIVEL WALL MOUNT FAUCET, 133X GOOSENECK w/  
STREAM REGULATOR, Ø2" WALL FLANGES w/  
1/2" NPT ADJUSTABLE FEMALE INLETS & BUILT-IN STOPS

Drawn:

DHL

Approved

JHB

Checked

KJG

Scale:

1:4

Date:

07/01/10