



T&S BRASS AND BRONZE WORKS, INC.

2 Saddleback Cove / P.O. Box 1088
Travelers Rest, SC 29690

Model No.

B-0504-01

Item No.

Travelers Rest, SC: 800-476-4103 • Simi Valley, CA: 800-423-0150 • Fax: 864-834-3518 • www.tsbrass.com

This Space for Architect/Engineer Approval

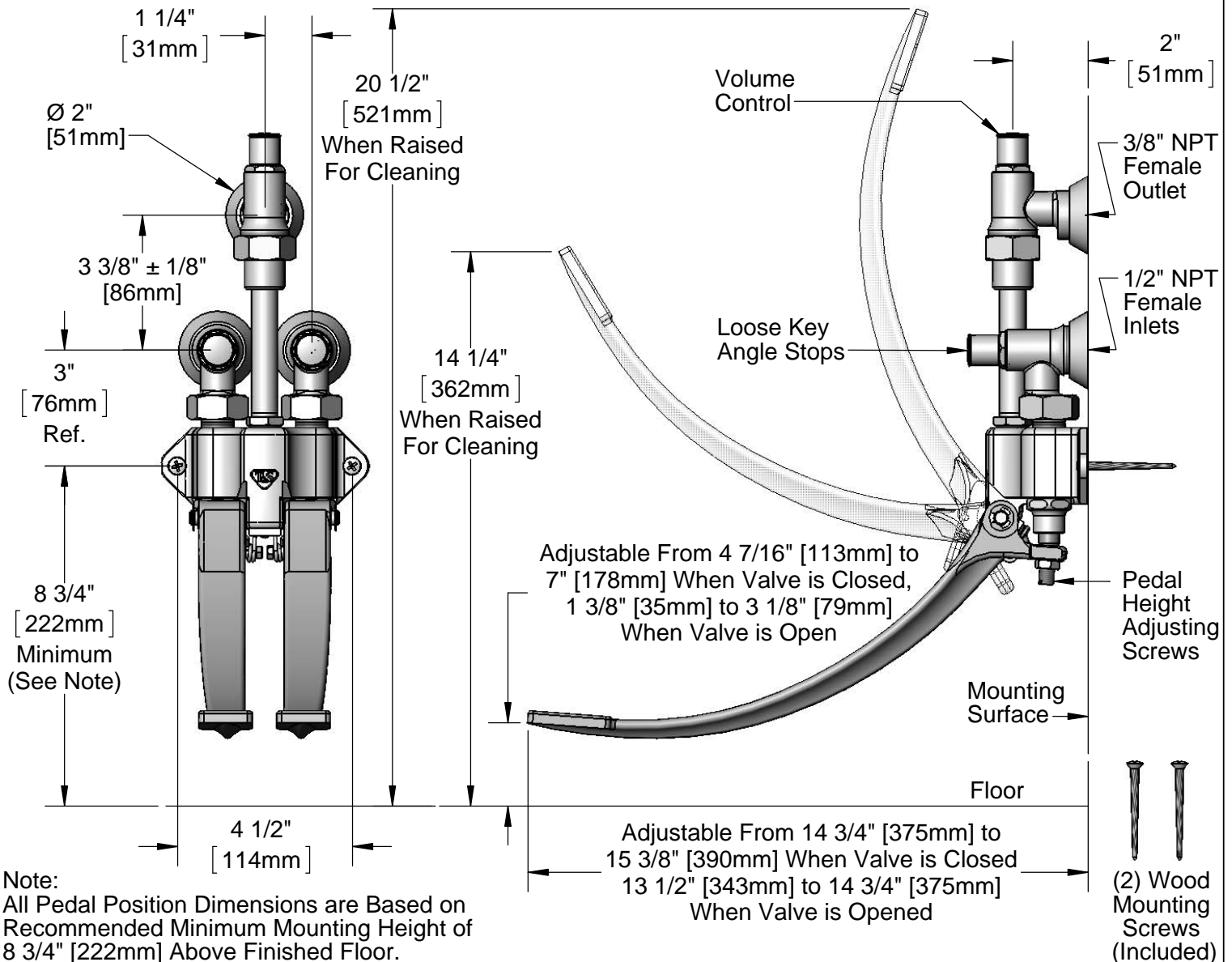
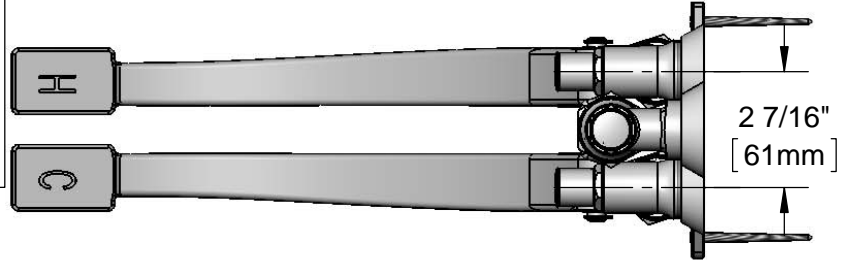
Job Name _____ Date _____

Model Specified _____ Quantity _____

Customer/Wholesaler _____

Contractor _____

Architect/Engineer _____



Product Specifications:
Double Pedal Valve w/ Vertical Loose Key Angle Stops
& Angle Volume Control

Drawn DHL	Checked DMH	Approved JHB
Scale: 1:4	Date: 08/29/12	



T&S BRASS AND BRONZE WORKS, INC.

2 Saddleback Cove / P.O. Box 1088
Travelers Rest, SC 29690

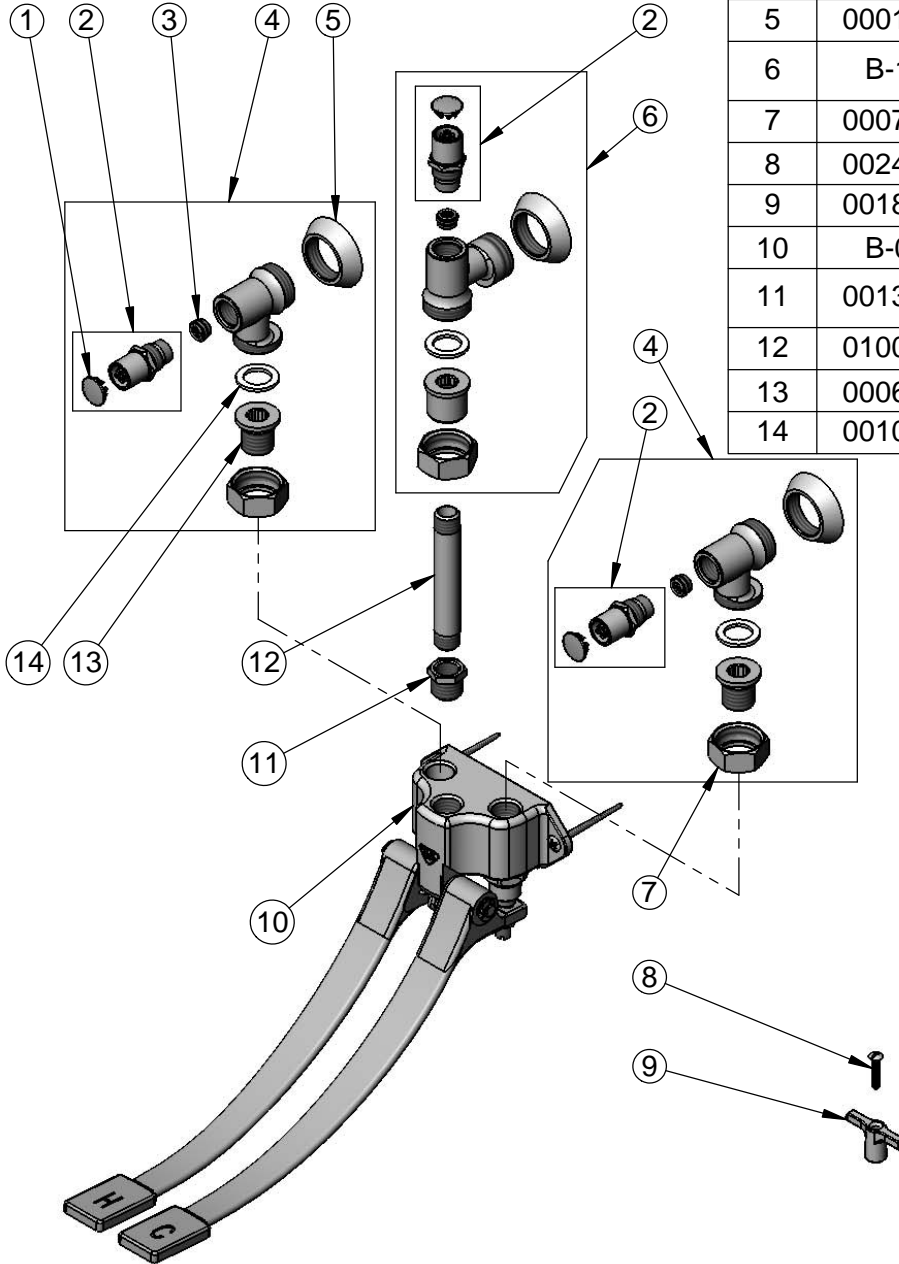
Model No.

B-0504-01

Item No.

Travelers Rest, SC: 800-476-4103 • Simi Valley, CA: 800-423-0150 • Fax: 864-834-3518 • www.tsbrass.com

ITEM NO.	SALES NO.	DESCRIPTION
1	001605-45	Cap
2	166A	Service Stop w/ Cap, T-Handle & Screw
3	000763-20	Seat
4	B-1350	Loose Key Angle Stop 1/2" NPT Male Union Coupling Outlet
5	000101-40	Flange
6	B-1355	Loose Key Angle Stop 3/8" NPT Female Union Coupling Inlet,
7	000721-25	Flange Coupling Nut
8	002432-45	Screw, Tee Handle
9	001802-45	Handle, Supply Stop "T"
10	B-0504	Double Pedal Valve, Wall Mount
11	001359-40	Hex Bushing, 1/2" Male x 3/8" Female
12	010092-40	Nipple, 3/8" NPT x 4 1/4" Long
13	000688-25	Insert, 1/2 NPT Male Union
14	001019-45	Coupling Nut Washer



Product Specifications:
Double Pedal Valve w/ Vertical Loose Key Angle Stops
& Angle Volume Control

Drawn DHL	Checked DMH	Approved JHB
Scale: NTS		Date: 08/29/12