

# T&S BRASS AND BRONZE WORKS, INC.

2 SADDLEBACK COVE / P.O. BOX 1088 / TRAVELERS REST, SC 29690

PHONE 800-476-4103

FAX 864-834-3518



REG.#A2601  
ISO #9002

Model No.

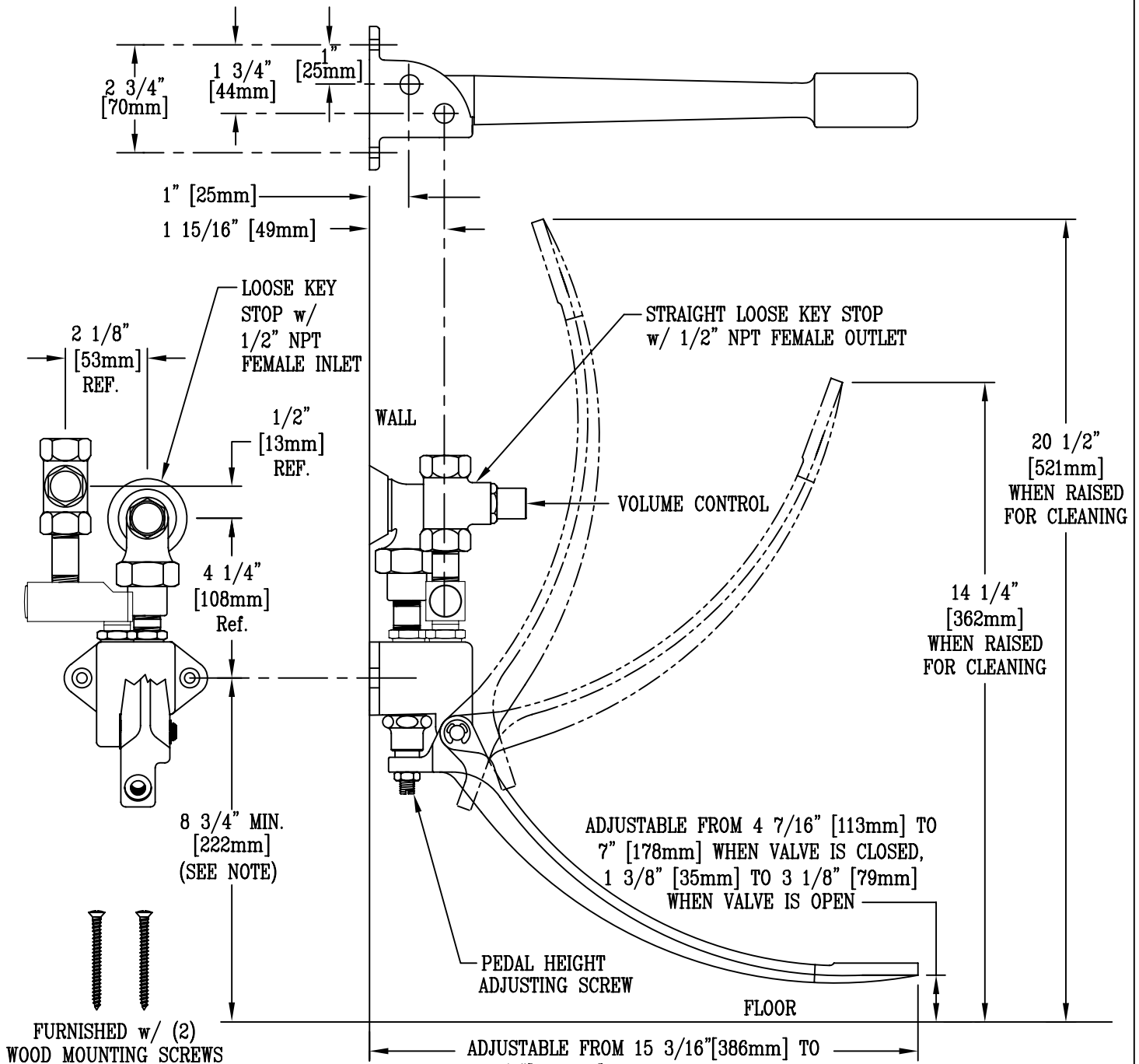
B-0508-02

Item No.:

Job Name:

Architect/Engineer Approval:

Notes:



NOTE: ALL PEDAL POSITION DIMENSIONS ARE BASED ON MINIMUM RECOMMENDED MOUNTING HEIGHT OF 8 3/4" [222mm] ABOVE FINISHED FLOOR.

Product Description:  SINGLE PEDAL VALVE WITH STRAIGHT STOP & VOLUME CONTROL	Drawn:	Checked:	Scale:
	DMH	GEF	1:4
	Approved:	Date:	
JHB	10/16/09		