



**T&S BRASS AND BRONZE WORKS, INC.**

2 Saddleback Cove / P.O. Box 1088  
 Travelers Rest, SC 29690

Model No.

**B-0590**

Item No.

Travelers Rest, SC: 800-476-4103 • Simi Valley, CA: 800-423-0150 • Fax: 864-834-3518 • www.tsbrass.com

This Space for Architect/Engineer Approval

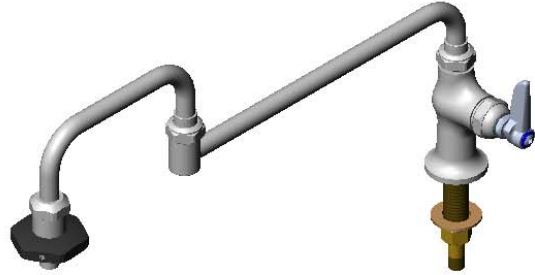
Job Name \_\_\_\_\_ Date \_\_\_\_\_

Model Specified \_\_\_\_\_ Quantity \_\_\_\_\_

Customer/Wholesaler \_\_\_\_\_

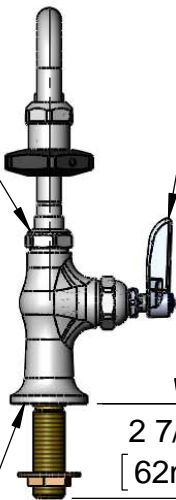
Contractor \_\_\_\_\_

Architect/Engineer \_\_\_\_\_



Eterna Cartridge & Lever Handle w/ Color Coded (CW) Index

Swivel Joint



Ø 2" [51mm]  
 Flange w/  
 1/2" NPSM  
 Male Shank  
 Inlet

10 5/16"  
 [262mm]

5 1/4"  
 [134mm]

Swivel Joint

Heat Resistant  
 "On-Off" Handle

Mounting Surface

18"  
 [456mm]

12"  
 [304mm]

6 3/4"  
 [171mm]

Fits Decks 1 1/8" [29mm] Thick  
 or 1 1/4" [32mm] Maximum by  
 Removing Washer

150A  
 Tailpiece & Nut for  
 1/4" NPT Connection

Note: Rough-In Requirement  
 Ø 1" [25mm] Mounting Hole

Product Specifications:  
 Single Hole Pot Filler Faucet w/ 18" Double Joint Swing Nozzle,  
 Heat Resistant Handle, Eterna Cartridge, Lever Handle, &  
 1/2" NPT Male Shank Inlet

Drawn

**DHL**

Checked

**DMH**

Approved

**JHB**

Scale:

**1:5**

Date:

**01/05/12**

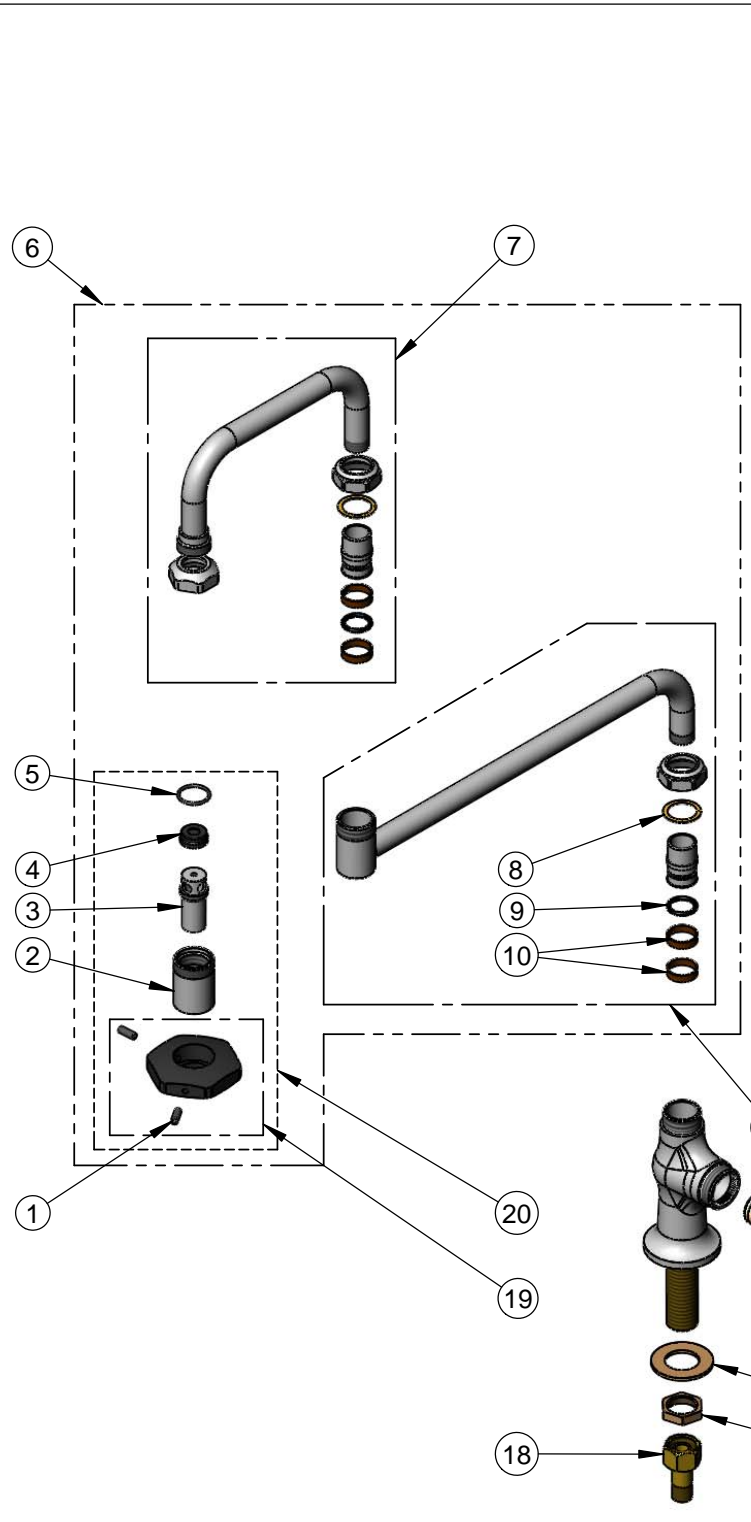


**T&S BRASS AND BRONZE WORKS, INC.**  
 2 Saddleback Cove / P.O. Box 1088  
 Travelers Rest, SC 29690

Model No.  
**B-0590**

Item No.

Travelers Rest, SC: 800-476-4103 • Simi Valley, CA: 800-423-0150 • Fax: 864-834-3518 • www.tsbrass.com



ITEM NO.	SALES NO.	DESCRIPTION
1	000936-45	Handle Set Screw
2	000587-25	Spout Body
3	001498-25	Spout
4	001089-45	Seal
5	003426-45	O-Ring
6	002848-40	Double Joint Nozzle Asm 18"
7	002870-40	6" Front Section Asm
8	009538-45	Swivel Washer
9	001074-45	O-Ring
10	011429-45	Swivel Sleeves (2)
11	002871-40	12" Back Section Asm
12	005960-40	Eterna Cartridge, RTC
13	001638-45	Lever Handle
14	001660-45	Blue Index-CW
15	000922-45	Lever Handle Screw
16	000999-45	Brass Lock Washer
17	002954-45	Shank Lock Nut
18	150A	Bag of (1) Tailpiece & (1) Nut
19	001126-20	Handle w/ (2) Set Screws
20	035A	Outlet Asm

Product Specifications:  
 Single Hole Pot Filler Faucet w/ 18" Double Joint Swing Nozzle,  
 Heat Resistant Handle, Eterna Cartridge, Lever Handle, &  
 1/2" NPT Male Shank Inlet

Drawn <b>DHL</b>	Checked <b>DMH</b>	Approved <b>JHB</b>
Scale: <b>NTS</b>		Date: <b>01/05/12</b>