



T&S BRASS AND BRONZE WORKS, INC.

2 Saddleback Cove / P.O. Box 1088
Travelers Rest, SC 29690



REG. #A2601
ISO #9001

Model No.

B-0651-06

Item No.

Travelers Rest, SC: 800-476-4103 Simi Valley, CA: 800-423-0150 Fax: 864-834-3518 www.tsbrass.com

This Space for Architect/Engineer Approval

Job Name _____ Date _____

Model Specified _____ Quantity _____

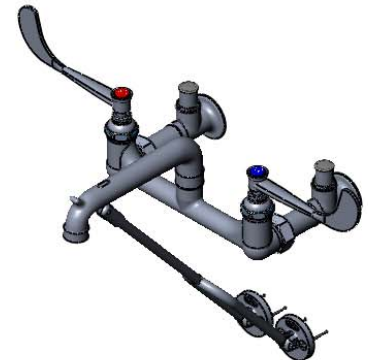
Customer/Wholesaler _____

Contractor _____

Architect/Engineer _____



ADA Compliant



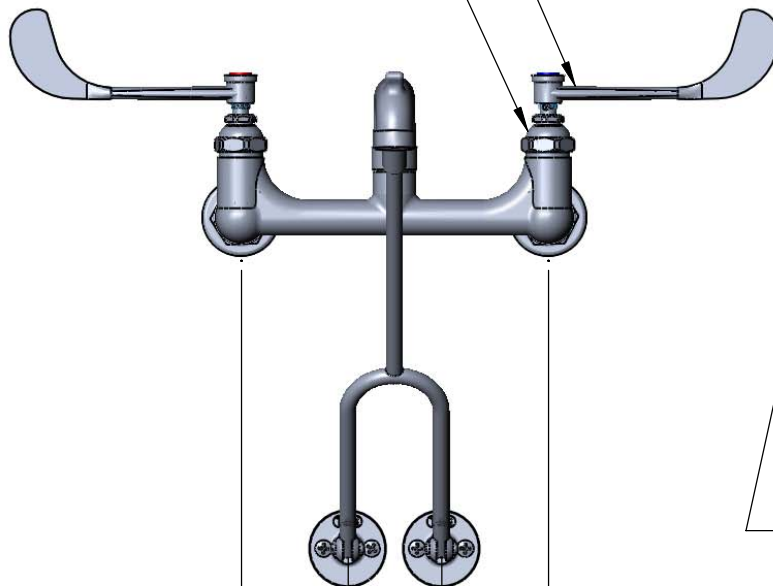
Hot & Cold Eterna
Cartridges w/
Spring Checks

B-WH6
6" Wrist Action Handles
w/ Color Coded Indexes

00JJ-XT
Integral
Supply Stops

000611-40
Extension

Ø2"
[51mm]
Flange w/
1/2" NPT
Female
Thread
Inlets



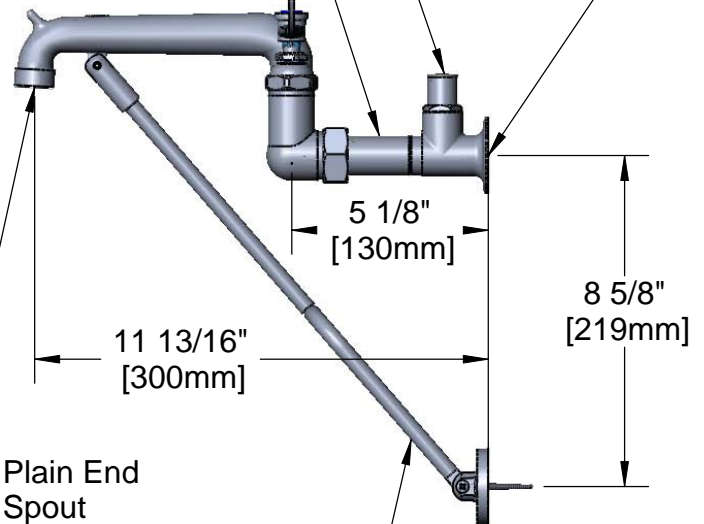
2 7/16"
[62mm]

8"

[203mm]

Adjustable from
7 3/4" to 8 1/4"

[197mm to 210mm]



Plain End
Spout

Lower Wall Support
Assembly Furnished
w/ Wall Bracket &
Mounting Screws

Mounting
Surface

Product Specifications:

8" Wall Support Service Sink, Polish Chrome Finish, 6" Wrist Action Handles, Lower Support Rod, 1/2" NPT Extended Inlets w/ Integral Stops, & Garden Hose Outlet

Drawn
DHL

Checked
KJG

Approved
JHB

Scale:

NTS

Date:

02/10/09

Sheet: 1 of 2



T&S BRASS AND BRONZE WORKS, INC.

2 Saddleback Cove / P.O. Box 1088
Travelers Rest, SC 29690



REG. #A2601
ISO #9001

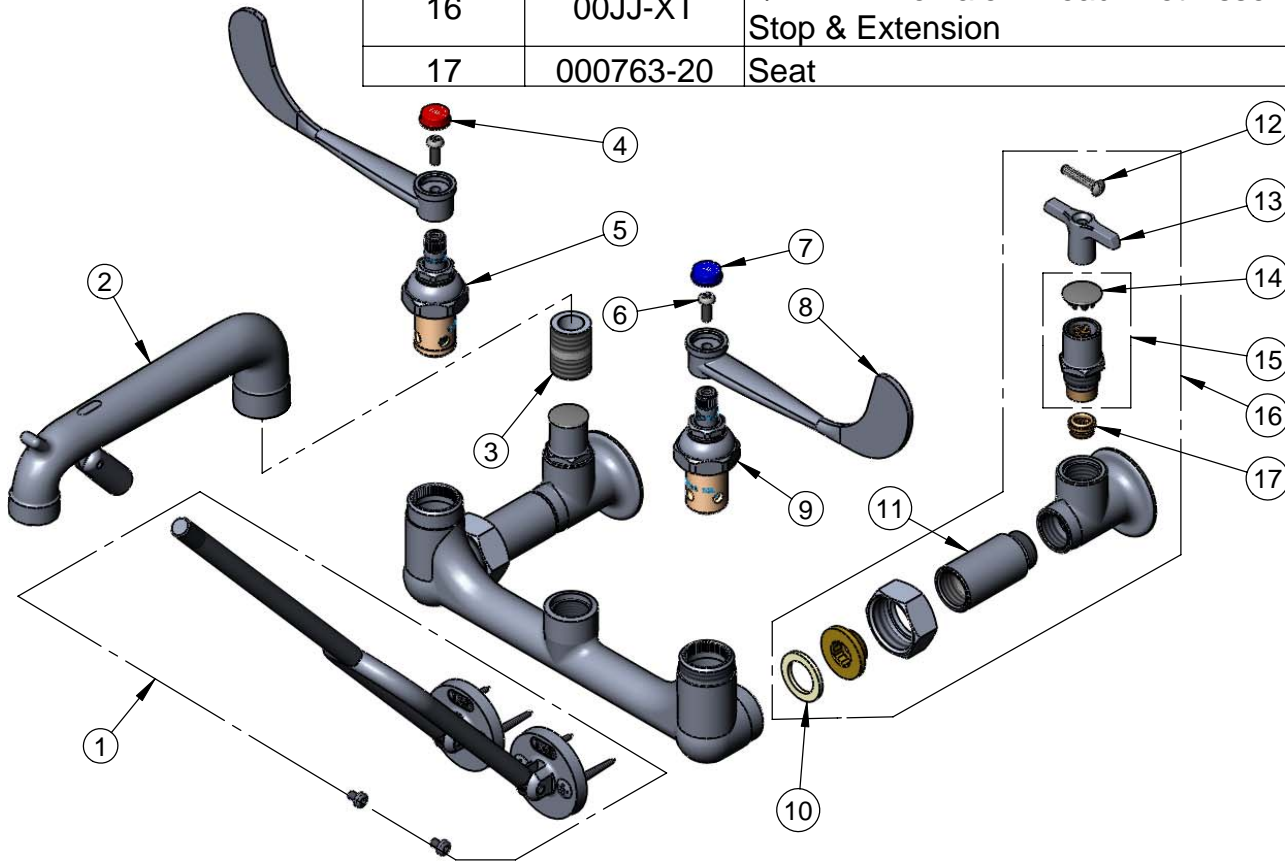
Model No.

B-0651-06

Item No.

Travelers Rest, SC: 800-476-4103 Simi Valley, CA: 800-423-0150 Fax: 864-834-3518 www.tsbrass.com

ITEM NO.	SALES NO.	DESCRIPTION
1	009616-40	Lower Support Rod Assembly w/ Mounting Screws
2	016844-40	Spout, B-0650 Chrome Polished
3	002534-25	Close Nipple, 1/2" x 1 5/32" Lg Rough Chrome
4	001194-45	Red HW Index
5	012443-40	Hot Eterna Spindle Assembly w/ Spring Check
6	000925-45	Lab Handle Screw
7	001686-45	Blue CW Index
8	B-WH6	6" Wrist Action Handle
9	012442-40	Cold Eterna Spindle Assembly w/ Spring Check
10	001019-45	Coupling Nut Washer
11	000611-25	Extension, 1 3/4" Long
12	002432-45	Loose Key Handle Screw
13	001802-45	Handle, Supply Stop "T"
14	001605-45	Cap
15	002892-40	Spindle Assembly w/ Cap
16	00JJ-XT	1/2" NPT Female Thread Inlet Assembly w/ Integral Stop & Extension
17	000763-20	Seat



Product Specifications:

8" Wall Support Service Sink, Polish Chrome Finish, 6" Wrist Action Handles, Lower Support Rod, 1/2" NPT Extended Inlets w/ Integral Stops, & Garden Hose Outlet

Drawn
DHL

Checked
KJG

Approved
JHB

Scale:

NTS

Date:

02/10/09