



T&S BRASS AND BRONZE WORKS, INC.
 2 SADDLEBACK COVE / P.O. BOX 1088 / TRAVELERS REST, SC 29690
 PHONE 800-476-4103 FAX 864- 834-3518



Model No.

B-0962

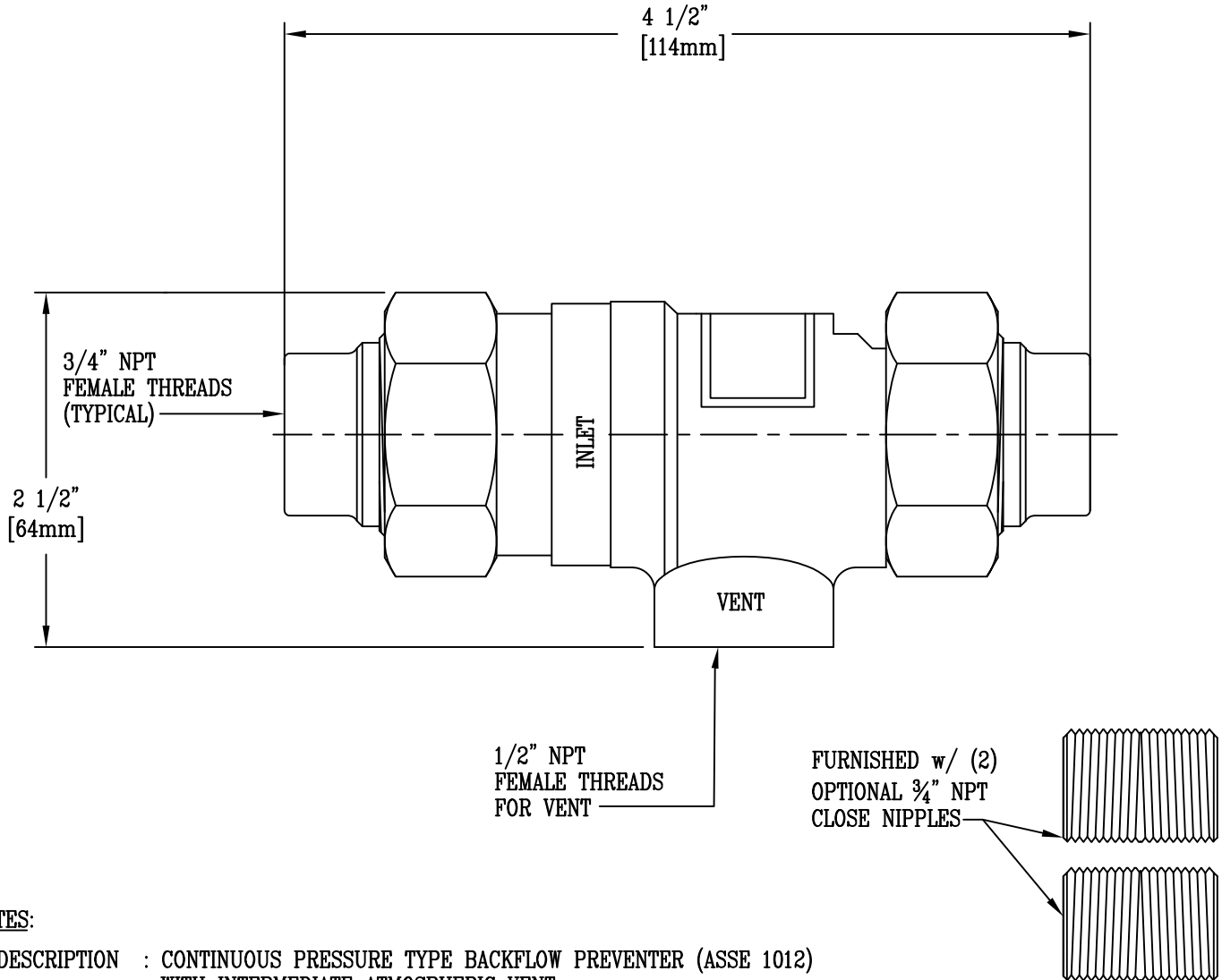
Item No.:

Job Name:

Architect/Engineer Approval:

Notes:

NOTE: THIS PRODUCT IS NOT DESIGNED &/OR RATED FOR POTABLE / DRINKING WATER APPLICATIONS



NOTES:

1. DESCRIPTION : CONTINUOUS PRESSURE TYPE BACKFLOW PREVENTER (ASSE 1012) WITH INTERMEDIATE ATMOSPHERIC VENT.
2. CONSTRUCTION : CHROME PLATED BRASS BODY WITH STAINLESS STEEL WORKING PARTS, INTEGRAL STRAINER, & DURABLE RUBBER DISCS. WEIGHT = 1.8 LBS.
3. RATING : MAX. WORKING PRESSURE 175 PSI, MIN. REQ'D PRESSURE: 25 PSI, TEMP. RANGE: 33°-250° F

Product Description:
 CONTINUOUS PRESSURE TYPE BACKFLOW PREVENTER WITH ATMOSPHERIC VENT, 3/4" NPT INLET & OUTLET (NON-POTABLE WATER APPLICATIONS)

Drawn:

JRM

Checked

GEF

Scale:

1 : 1

Approved

JHB

Date:

01/22/10