

# T&S BRASS AND BRONZE WORKS, INC.

2 Saddleback Cove / P.O. Box 1088  
Travelers Rest, SC 29690

Model No.

**B-1141-XS**

Item No.

Travelers Rest, SC: 800-476-4103 • Simi Valley, CA: 800-423-0150 • Fax: 864-834-3518 • www.tsbrass.com



**ADA Compliant**

This Space for Architect/Engineer Approval

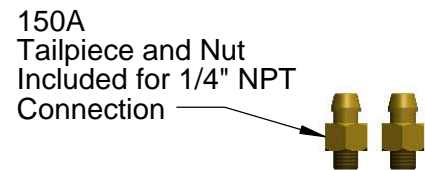
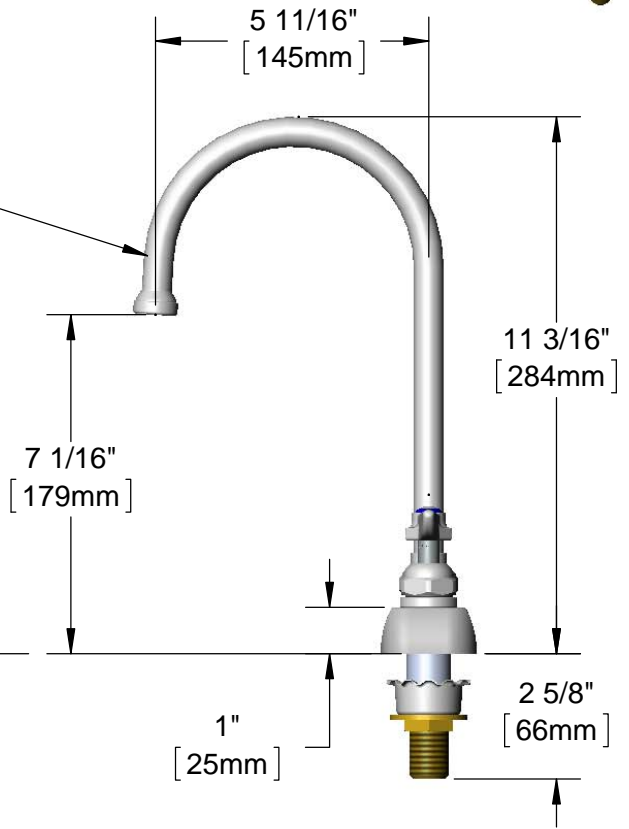
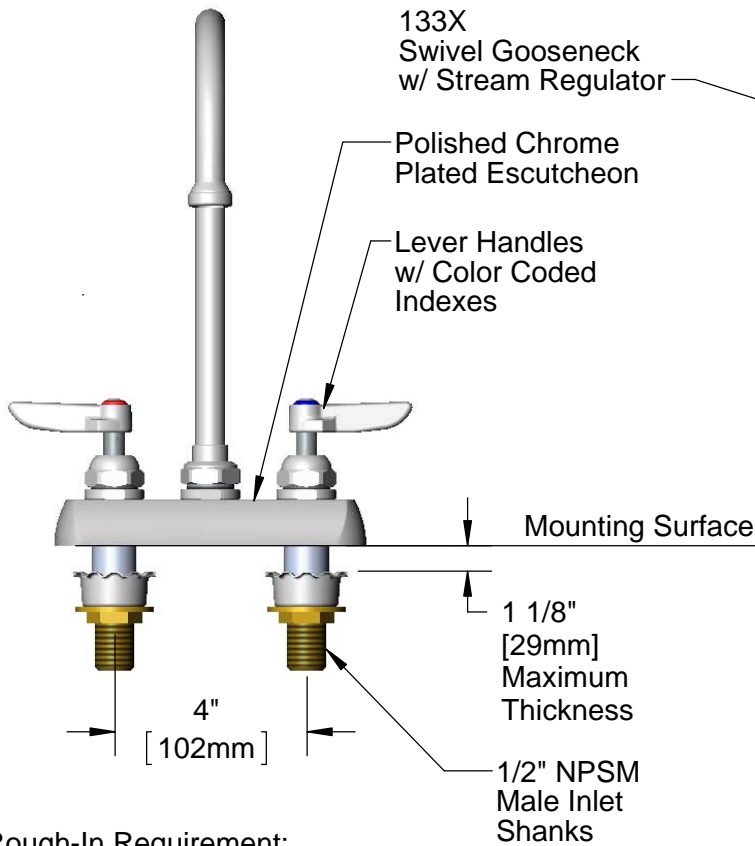
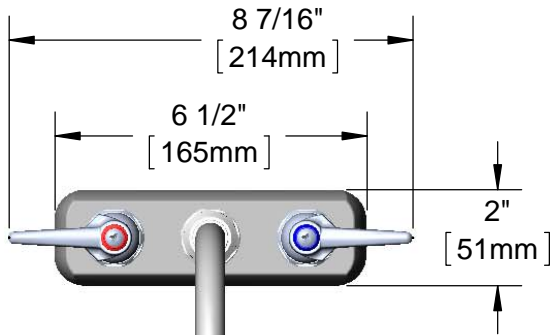
Job Name \_\_\_\_\_ Date \_\_\_\_\_

Model Specified \_\_\_\_\_ Quantity \_\_\_\_\_

Customer/Wholesaler \_\_\_\_\_

Contractor \_\_\_\_\_

Architect/Engineer \_\_\_\_\_



**Rough-In Requirement:**  
(2)  $\phi$  1" [25mm] Mounting Holes

**Product Specifications:**  
4" Deck Mount Workboard Mixing Faucet w/ Lever Handles, Swivel Gooseneck, Stream Regulator & 1/2" NPSM Male Extended Shanks

Drawn  
**KJG**

Checked  
**GEF**

Approved  
**JHB**

Scale:  
**1:4**

Date:  
**05/31/12**



# T&S BRASS AND BRONZE WORKS, INC.

2 Saddleback Cove / P.O. Box 1088

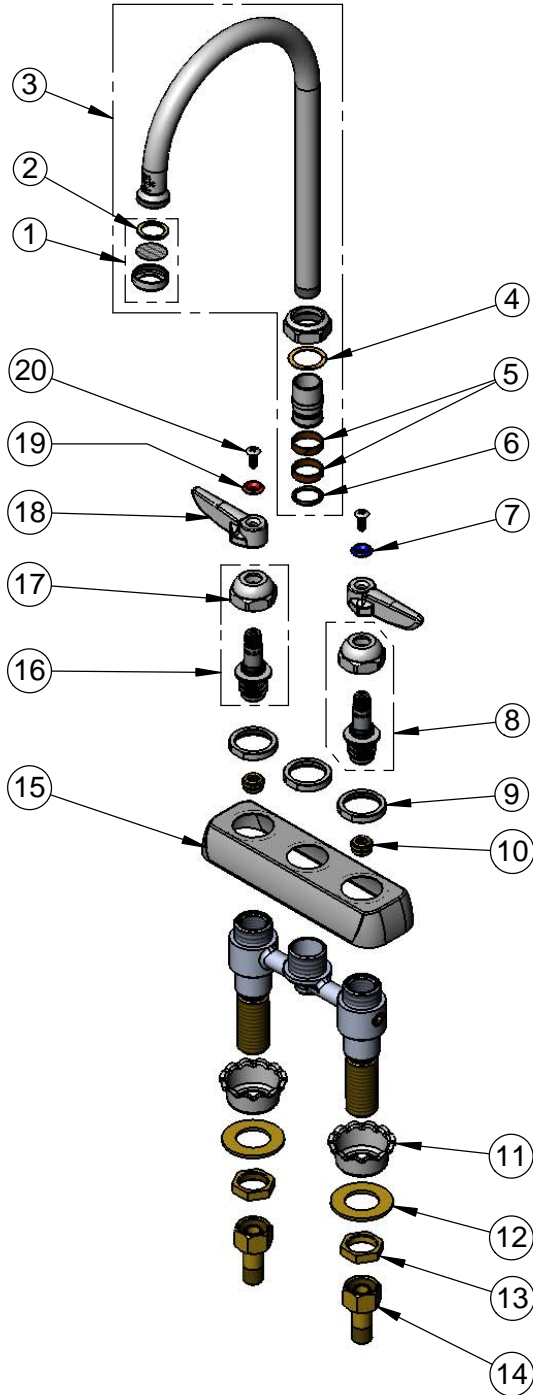
Travelers Rest, SC 29690

Model No.

**B-1141-XS**

Item No.

Travelers Rest, SC: 800-476-4103 • Simi Valley, CA: 800-423-0150 • Fax: 864-834-3518 • www.tsbrass.com



| ITEM NO. | SALES NO. | DESCRIPTION   |
|----------|-----------|---|
| 1        | B-PT      | Stream Regulator Outlet                             |
| 2        | 001048-45 | Nozzle Tip Washer                                   |
| 3        | 133X      | 6" Swivel Gooseneck w/ B-PT Stream Regulator Outlet |
| 4        | 009538-45 | Swivel Washer                                       |
| 5        | 011429-45 | Swivel Sleeves (2)                                  |
| 6        | 001074-45 | O-Ring  |
| 7        | 001660-45 | Blue Index-CW                                       |
| 8        | 009754-25 | B-1100 Spindle Assembly, LTC                        |
| 9        | 000712-25 | Escutcheon Lock Nut                                 |
| 10       | 000763-20 | Seat  |
| 11       | 001000-45 | Rosette Washer                                      |
| 12       | 000999-45 | Brass Lock Washer                                   |
| 13       | 002954-45 | Shank Lock Nut                                      |
| 14       | 150A      | Bag of (1) Nut & (1) Tailpiece                      |
| 15       | 001258-40 | Escutcheon  |
| 16       | 009753-25 | B-1100 Spindle Assembly, RTC                        |
| 17       | 009749-25 | Bonnet Nut  |
| 18       | 001638-45 | Lever Handle  |
| 19       | 001661-45 | Red Index-HW  |
| 20       | 000922-45 | Lever Handle Screw                                  |

**Product Specifications:**

4" Deck Mount Workboard Mixing Faucet w/ Lever Handles, Swivel Gooseneck, Stream Regulator & 1/2" NPSM Male Extended Shanks

Drawn

**KJG**

Checked

**GEF**

Approved

**JHB**

Scale:

**NTS**

Date:

**05/31/12**