



# T&S BRASS AND BRONZE WORKS, INC.

2 Saddleback Cove / P.O. Box 1088  
Travelers Rest, SC 29690



REG. #A2601  
ISO #9001

Model No.

**B-1142-04**

Item No.

Travelers Rest, SC: 800-476-4103 • Simi Valley, CA: 800-423-0150 • Fax: 864-834-3518 • www.tsbrass.com

This Space for Architect/Engineer Approval

Job Name \_\_\_\_\_ Date \_\_\_\_\_

Model Specified \_\_\_\_\_ Quantity \_\_\_\_\_

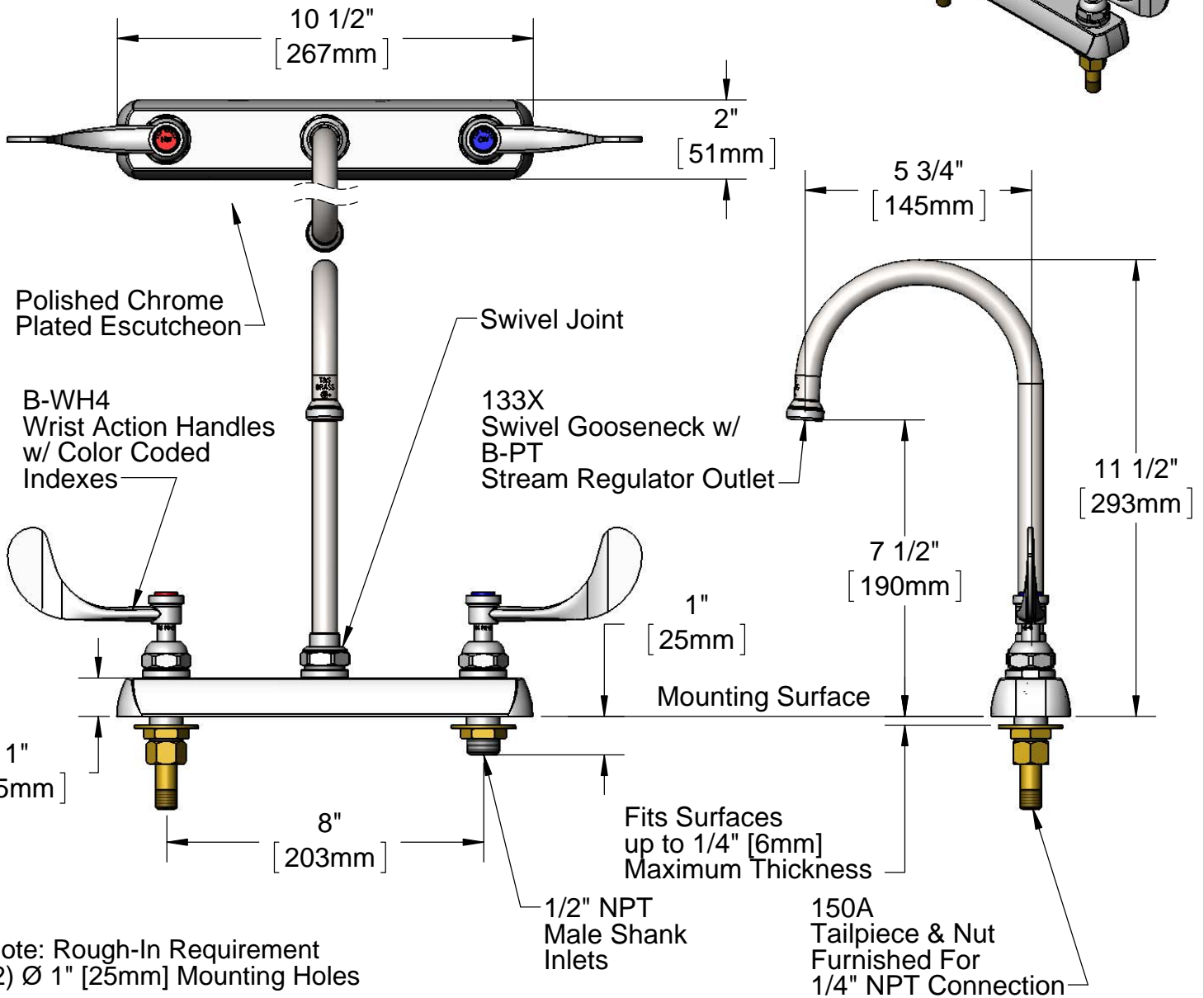
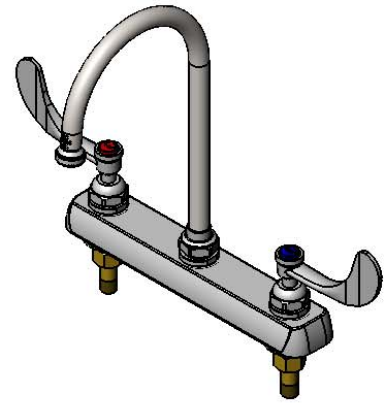
Customer/Wholesaler \_\_\_\_\_

Contractor \_\_\_\_\_

Architect/Engineer \_\_\_\_\_



**ADA Compliant**



Note: Rough-In Requirement  
(2) Ø 1" [25mm] Mounting Holes

Product Specifications:

8" Centers Workboard Faucet w/ 1/2" NPT Male Shank Inlets, Wrist Action Handles & 6" Swivel Gooseneck w/ B-PT Stream Regulator Outlet

Drawn

**DHL**

Checked

**KJG**

Approved

**JHB**

Scale:

**1:4**

Date:

**07/01/11**



**T&S BRASS AND BRONZE WORKS, INC.**

2 Saddleback Cove / P.O. Box 1088  
Travelers Rest, SC 29690



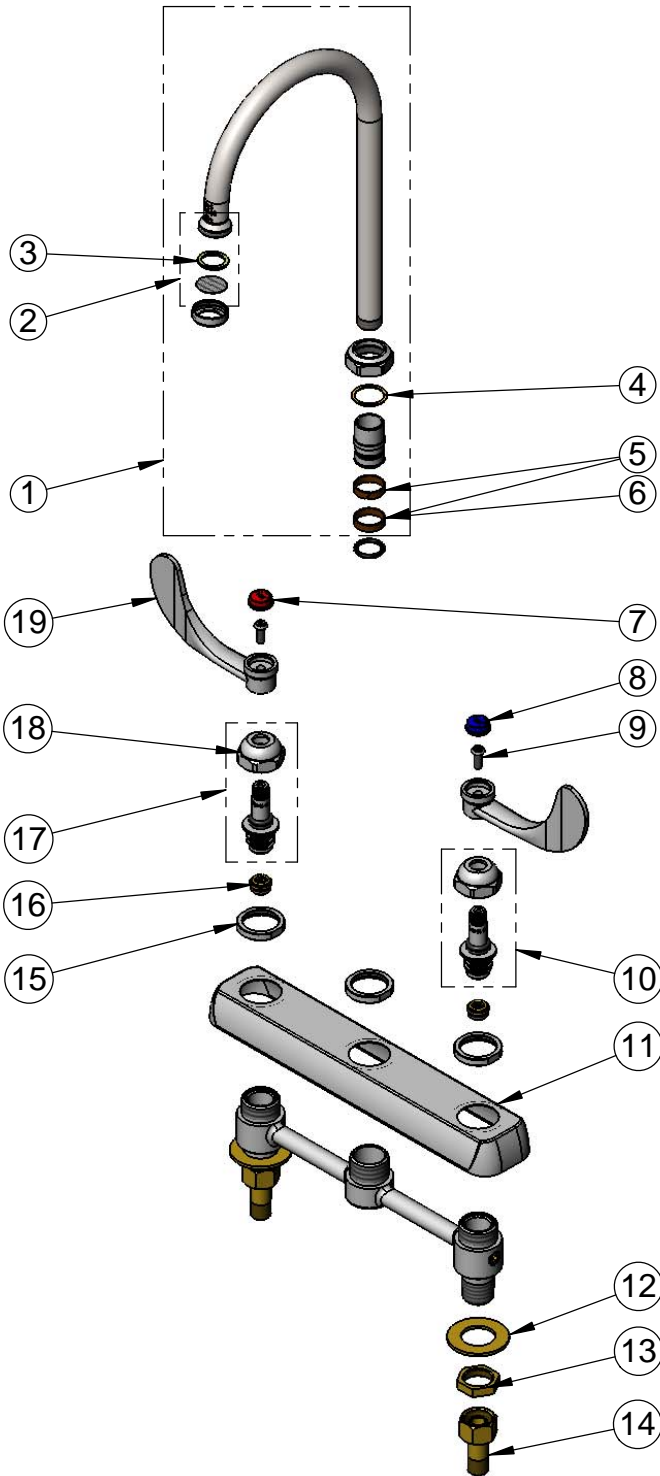
REG. #A2601  
ISO #9001

Model No.

**B-1142-04**

Item No.

Travelers Rest, SC: 800-476-4103 • Simi Valley, CA: 800-423-0150 • Fax: 864-834-3518 • www.tsbrass.com



ITEM NO.	SALES NO.	DESCRIPTION
1	133X	Swivel Gooseneck w/ B-PT Stream Regulator
2	B-PT	Stream Regulator
3	001048-45	Nozzle Tip Washer
4	009538-45	Swivel Washer
5	011429-45	Swivel Sleeves (2)
6	001074-45	O-Ring
7	001194-45	Red HW Index
8	001686-45	Blue CW Index
9	000925-45	Lab Handle Screw
10	009754-25	B-1100 LH Spindle Assembly
11	001259-40	Escutcheon
12	000999-45	Brass Lock Washer
13	002954-45	Shank Lock Nut
14	150A	Bag of (1) Nut & (1) Tailpiece
15	000712-25	Escutcheon Lock Nut
16	000763-20	Seat
17	009753-25	B-1100 RH Spindle Assembly
18	009749-25	Bonnet Nut
19	B-WH4	4" Wrist Action Handle

Product Specifications:

8" Centers Workboard Faucet w/ 1/2" NPT Male Shank Inlets, Wrist Action Handles & 6" Swivel Gooseneck w/ B-PT Stream Regulator Outlet

Drawn

**DHL**

Checked

**KJG**

Approved

**JHB**

Scale:

**NTS**

Date:

**07/01/11**