



T&S BRASS AND BRONZE WORKS, INC.

2 Saddleback Cove / P.O. Box 1088
Travelers Rest, SC 29690



REG. #A2601
ISO #9001

Model No.

B-1151

Item No.

Travelers Rest, SC: 800-476-4103 Simi Valley, CA: 800-423-0150 Fax: 864-834-3518 www.tsbrass.com

This Space for Architect/Engineer Approval

Job Name _____ Date _____

Model Specified _____ Quantity _____

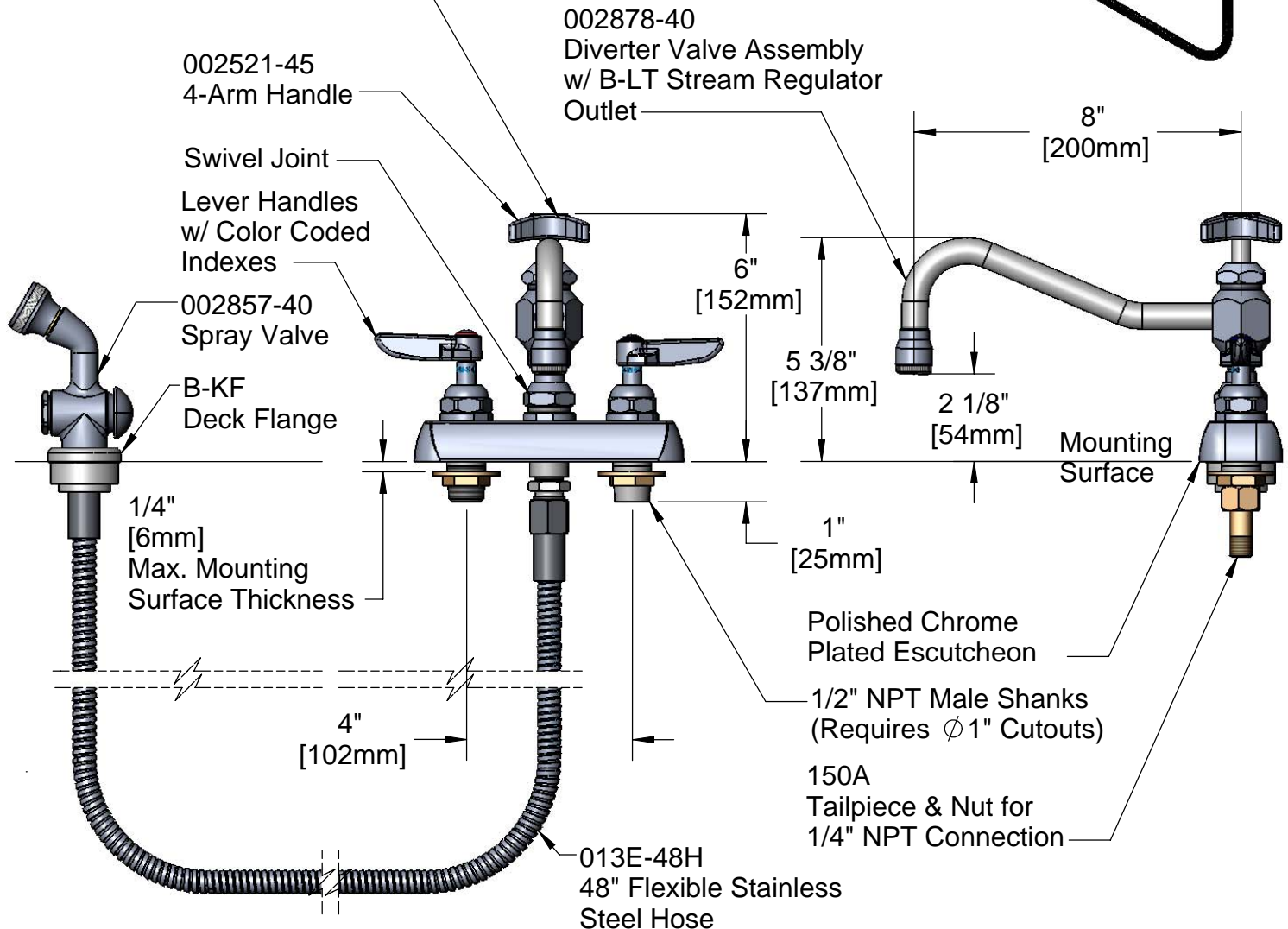
Customer/Wholesaler _____

Contractor _____

Architect/Engineer _____



Opening Faucet Pressurizes Hose. For Full Hose Pressure, Turn 4-Arm Handle Until It Pops-up, Stopping Water Flow Through Nozzle



Product Specifications:

Workboard Faucet w/ 1/2" NPT Male Shanks, 4" Inlet Centers, 8" Swing Nozzle, Spray Valve w/ 48" Flex Stainless Steel Hose & Lever Handles

Drawn DHL	Checked DMH	Approved JHB
Scale: 1:4		Date: 10/16/08



T&S BRASS AND BRONZE WORKS, INC.

2 Saddleback Cove / P.O. Box 1088
Travelers Rest, SC 29690



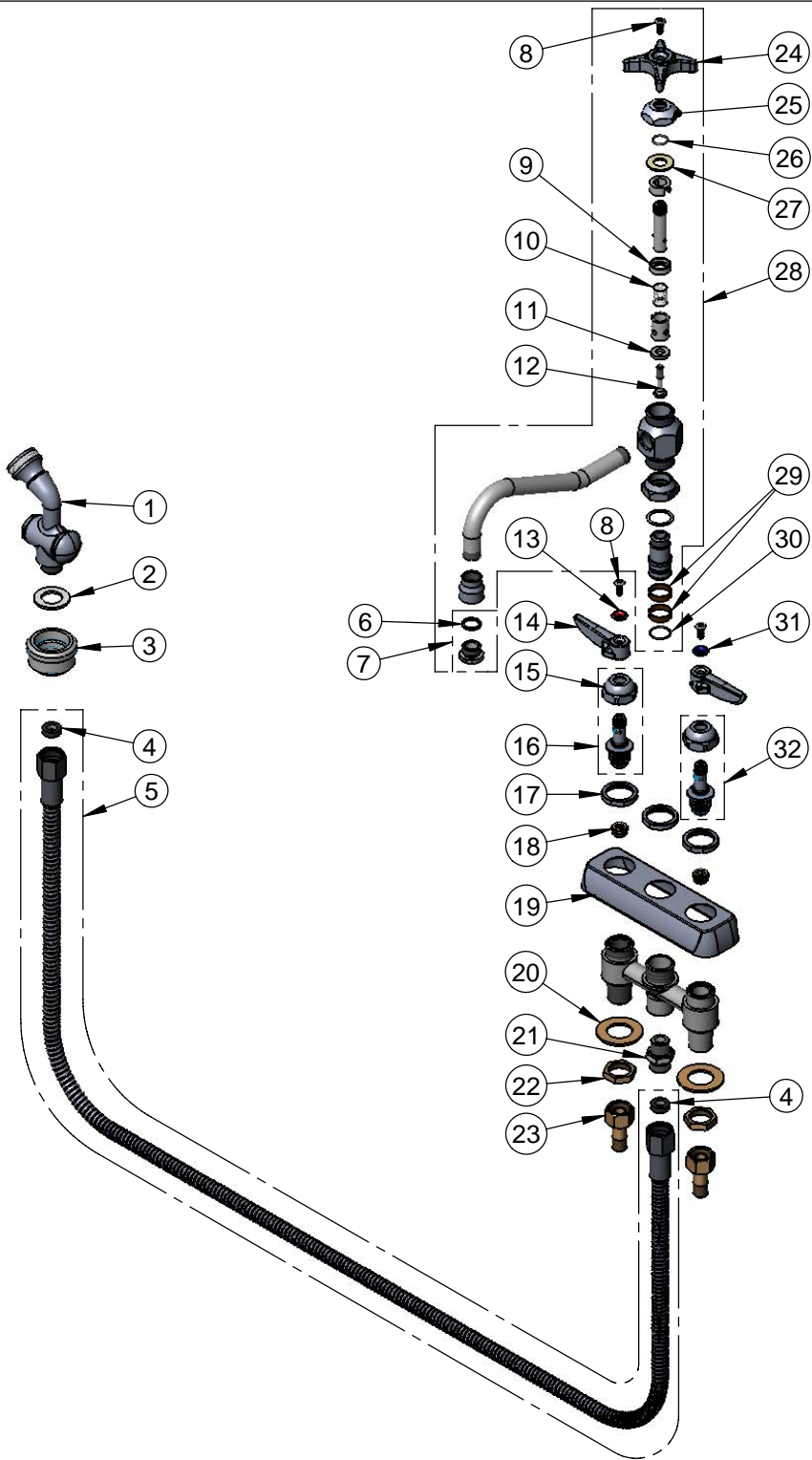
REG. #A2601
ISO #9001

Model No.

B-1151

Item No.

Travelers Rest, SC: 800-476-4103 Simi Valley, CA: 800-423-0150 Fax: 864-834-3518 www.tsbrass.com



ITEM NO.	SALES NO.	DESCRIPTION
1	002857-40	Spray Valve Assembly
2	001010-40	Washer, Stainless Steel
3	B-KF	Protective Flange
4	010476-45	#27 Washer
5	013E-48H	48" Flex Stainless Steel Hose Assembly
6	001043-45	Washer
7	B-LT	Stream Regulator Outlet
8	000922-45	Lever Handle Screw
9	000875-20	Washer
10	000893-45	Spring
11	001084-45	Seat Washer
12	000832-20	Stem Diverter Bottom
13	001661-45	Red Index-HW
14	001638-45	Lever Handle
15	009749-25	Bonnet Nut
16	009753-25	B-1100 RH Spindle Assembly
17	000712-25	Escutcheon Lock Nut
18	000763-20	Seat
19	001258-40	Escutcheon
20	000999-45	Brass Lock Washer
21	000545-25	Adapter, 3/8" NPT x 3/4"-14 UNS
22	002954-45	Shank Lock Nut
23	150A	Bag of (1) Nut & (1) Tailpiece
24	002521-45	4-Arm Handle
25	000881-40	Bonnet Nut
26	001075-45	O-ring, Nitrile -111
27	001047-45	Washer, Santoprene
28	002878-40	Diverter Valve Assembly
29	011429-45	Swivel Sleeve (2)
30	001074-45	O-Ring
31	001660-45	Blue Index-CW
32	009754-25	B-1100 LH Spindle Assembly

Product Specifications:

Workboard Faucet w/ 1/2" NPT Male Shanks,
4" Inlet Centers, 8" Swing Nozzle, Spray Valve
w/ 48" Flex Stainless Steel Hose & Lever Handles

Drawn DHL	Checked DMH	Approved JHB
Scale: NTS		Date: 10/16/08