



T&S BRASS AND BRONZE WORKS, INC.

2 Saddleback Cove / P.O. Box 1088
Travelers Rest, SC 29690

Model No.

B-1172-07-133X

Item No.

Travelers Rest, SC: 800-476-4103 • Simi Valley, CA: 800-423-0150 • Fax: 864-834-3518 • www.tsbrass.com

This Space for Architect/Engineer Approval

Job Name _____ Date _____

Model Specified _____ Quantity _____

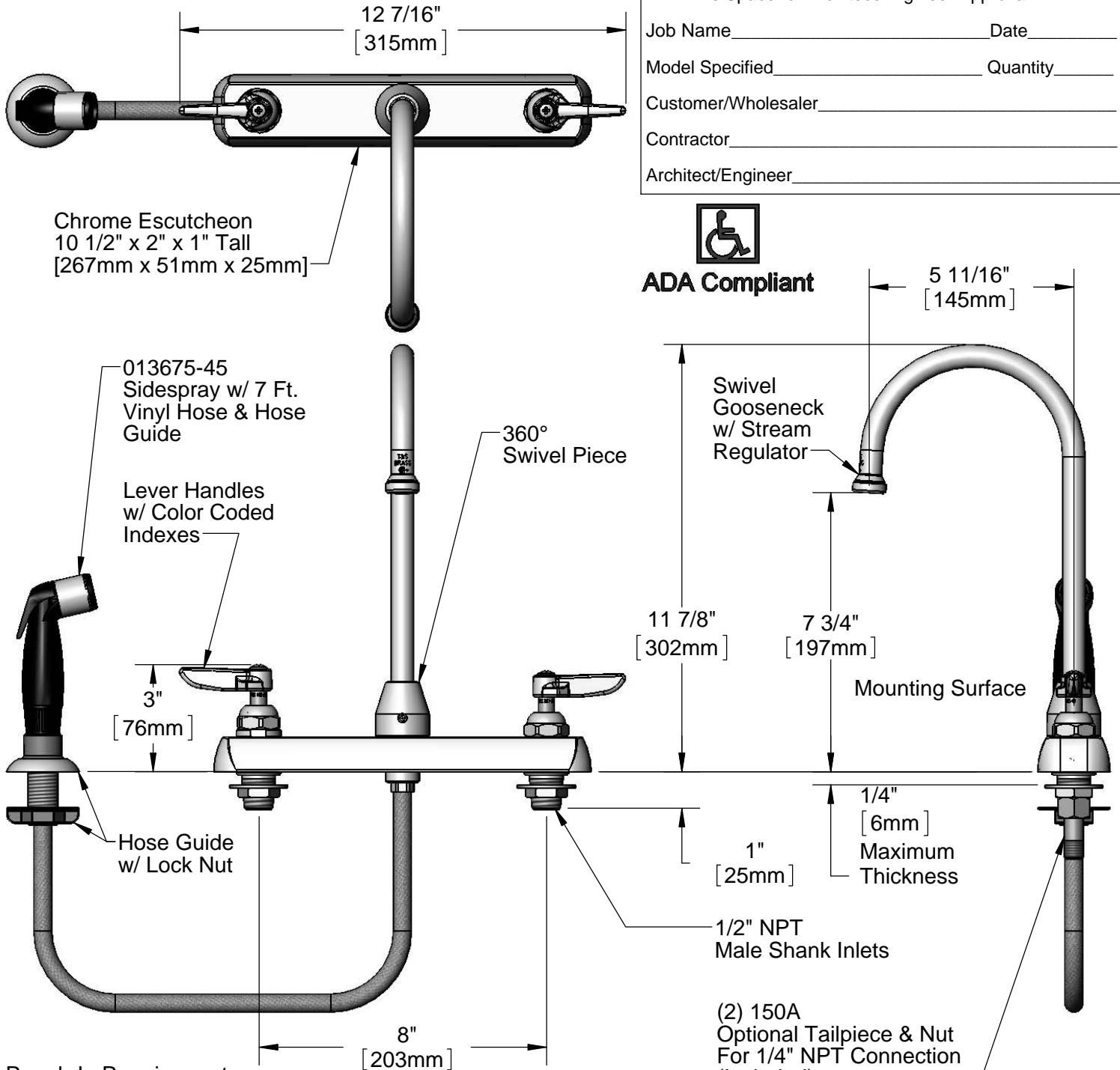
Customer/Wholesaler _____

Contractor _____

Architect/Engineer _____



ADA Compliant



Rough-In Requirement:
(3) Ø 1" [25mm] Mounting Holes

Product Specifications:

8" Deck Mount Workboard Faucet w/ Lever Handles, Swivel Gooseneck, w/ Stream Regulator, 7 Ft. Sidespray w/ Vinyl Hose & Hose Guide & 1/2" NPT Male Shank Inlets

Drawn

DHL

Checked

DMH

Approved

JHB

Scale:

1:4

Date:

11/02/12



T&S BRASS AND BRONZE WORKS, INC.

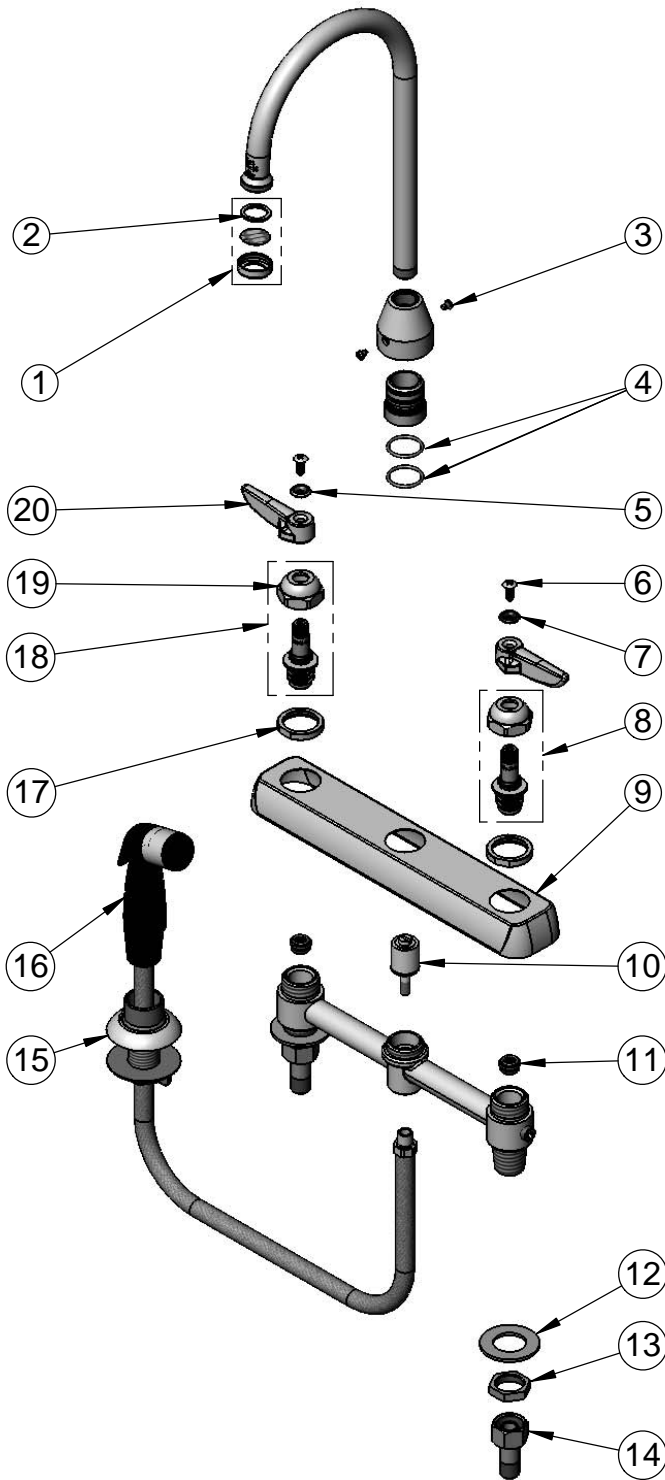
2 Saddleback Cove / P.O. Box 1088
Travelers Rest, SC 29690

Model No.

B-1172-07-133X

Item No.

Travelers Rest, SC: 800-476-4103 • Simi Valley, CA: 800-423-0150 • Fax: 864-834-3518 • www.tsbrass.com



ITEM NO.	SALES NO.	DESCRIPTION
1	B-PT	Stream Regulator
2	001048-45	Nozzle Tip Washer
3	001486-45	Diverter Cover Screw
4	001069-45	O-ring
5	001661-45	Red Index-HW
6	000922-45	Lever Handle Screw
7	001660-45	Blue Index-CW
8	009754-25	B-1100 Spindle Assembly, LTC
9	001259-40	Escutcheon
10	002338-45	Valve Diverter Piston
11	000763-20	Seat
12	000999-45	Brass Lock Washer
13	002954-45	Shank Lock Nut
14	150A	Bag of (1) Tailpiece & (1) Nut
15	001496-45	Hose Guide
16	013675-45	SideSpray w/ 7 FT.Vinyl Hose & Hose Guide
17	000712-25	Escutcheon Lock Nut
18	009753-25	B-1100 Spindle Assembly, RTC
19	009749-25	Bonnet Nut
20	001638-45	Lever Handle

Product Specifications:

8" Deck Mount Workboard Faucet w/ Lever Handles, Swivel Gooseneck, w/ Stream Regulator, 7 Ft. Sidespray w/ Vinyl Hose & Hose Guide & 1/2" NPT Male Shank Inlets

Drawn

DHL

Checked

DMH

Approved

JHB

Scale:

NTS

Date:

11/02/12