



T&S BRASS AND BRONZE WORKS, INC.

2 Saddleback Cove / P.O. Box 1088
Travelers Rest, SC 29690



Model No.

B-1432-01

Item No.

Travelers Rest, SC: 800-476-4103 Simi Valley, CA: 800-423-0150 Fax: 864-834-3518 www.tsbrass.com

This Space for Architect/Engineer Approval

Job Name _____ Date _____

Model Specified _____ Quantity _____

Customer/Wholesaler _____

Contractor _____

Architect/Engineer _____

EPA2005 Non-Compliant

B-0963 Continuous
Pressure Type Vacuum
Breaker w/ Integral
Check Valve

HW-4B-36 3/8" NPT x
36" Flexible Water
Connector To Hose Reel

B-7232-01 Open Coated
Hose Reel w/ 35 Ft. Hose

B-0109-07
Bracket

3/8" NPT x 22"
Riser

0RK2
Control Valve

3/8" NPT x 12"
Riser

B-0513
Mixing Faucet
3" c/c Mounting
Required
Lever Handles
w/ Color-Coded
Indexes

Ø 1/2"
[13mm]

6 7/16"
[164mm]

3/4"
[19mm]

5 1/2"
[139mm]

2 3/8"
[60mm]

5 1/4"
[133mm]

1/2" TYP
[13mm]

EB-0107
Blue Spray
Valve

26 11/16"
[679mm]

23 13/16"
[604mm]

13 9/16"
[344mm]

B-CVH1-2
1/2 NPT
Female
Check
Valves(2)

Product Specifications:

Open Coated Hose Reel w/ 35 Ft Hose, Blue Spray Valve,
Vacuum Breaker, 3/8" NPT Flex Water Connector Asm,
3" c/c Wall Mounted Faucet, & Control Valve In Riser

Drawn

JRM

Checked

DMH

Approved

4/19/10

Scale:

NTS

Date:

JHB



T&S BRASS AND BRONZE WORKS, INC.

2 Saddleback Cove / P.O. Box 1088
Travelers Rest, SC 29690



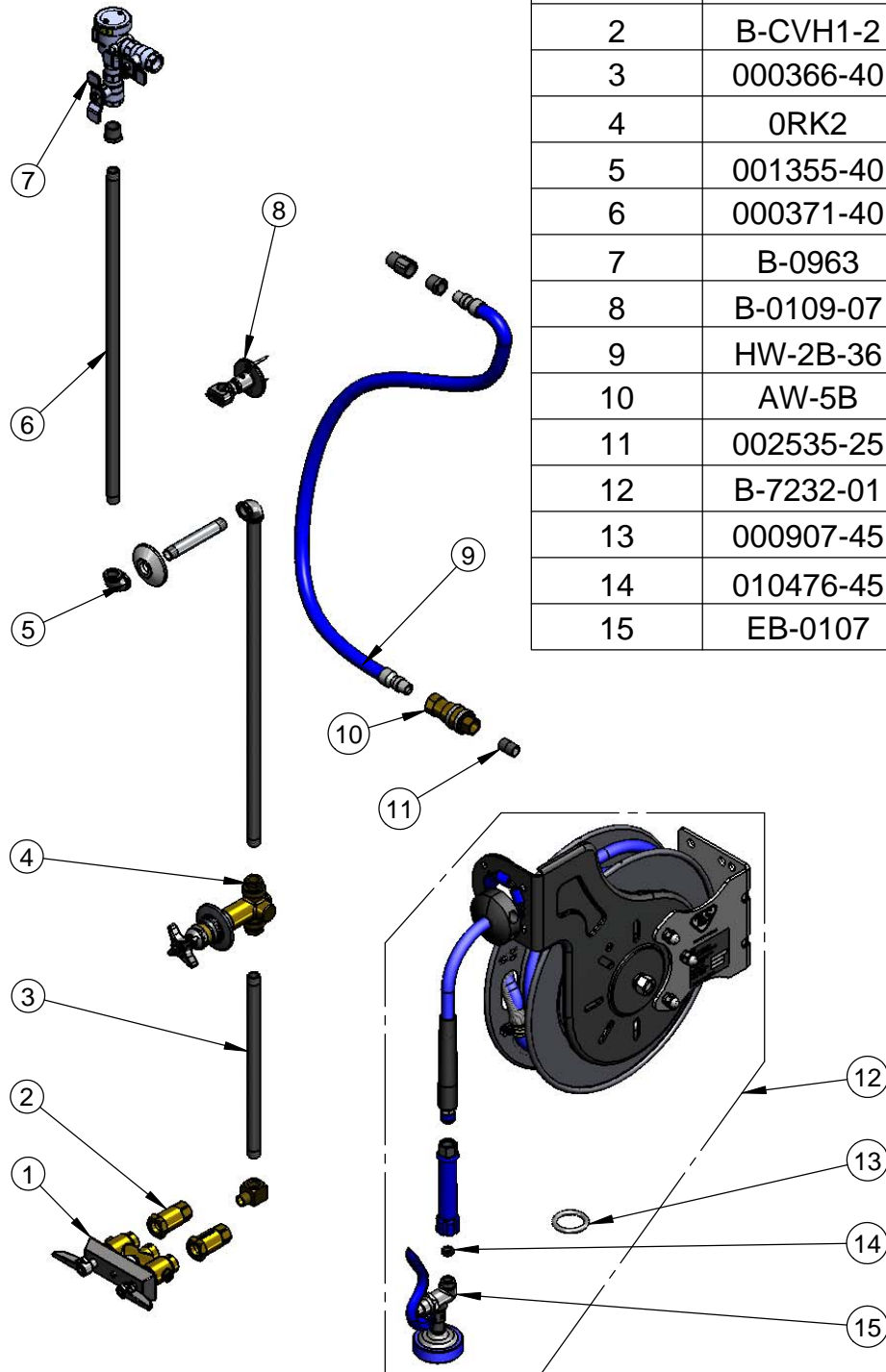
REG. #A2601
ISO #9001

Model No.

B-1432-01

Item No.

Travelers Rest, SC: 800-476-4103 Simi Valley, CA: 800-423-0150 Fax: 864-834-3518 www.tsbrass.com



ITEM NO.	SALES NO.	DESCRIPTION
1	B-0513	B-0513 Mixing Faucet
2	B-CVH1-2	1/2" Check Valve
3	000366-40	12" Nipple, 3/8" NPT
4	0RK2	Control Valve
5	001355-40	Elbow, 3/8 NPT
6	000371-40	Nipple, 3/8" x 22"
7	B-0963	B-0963 VB
8	B-0109-07	Wall Bracket
9	HW-2B-36	3/8 NPT x 36" Flex Water Hose
10	AW-5B	QD Water Socket/Plug 3/8" Brass
11	002535-25	3/8" Close Nipple
12	B-7232-01	Open Coated Reel 35' of 3/8" Hose
13	000907-45	Spray Valve Hold Down Ring
14	010476-45	#27 Washer
15	EB-0107	EB-0107 Spray Valve

Product Specifications:

Open Coated Hose Reel w/ 35 Ft Hose, Blue Spray Valve,
Vacuum Breaker, 3/8" NPT Flex Water Connector Asm,
3" c/c Wall Mounted Faucet, & Control Valve In Riser

Drawn

JRM

Checked

DMH

Approved

4/19/10

Scale:

NTS

Date:

JHB