



T&S BRASS AND BRONZE WORKS, INC.

2 Saddleback Cove / P.O. Box 1088
Travelers Rest, SC 29690



REG. #A2601
ISO #9001

Model No.

B-2701

Item No.

Travelers Rest, SC: 800-476-4103 • Simi Valley, CA: 800-423-0150 • Fax: 864-834-3518 • www.tsbrass.com

This Space for Architect/Engineer Approval

Job Name _____ Date _____

Model Specified _____ Quantity _____

Customer/Wholesaler _____

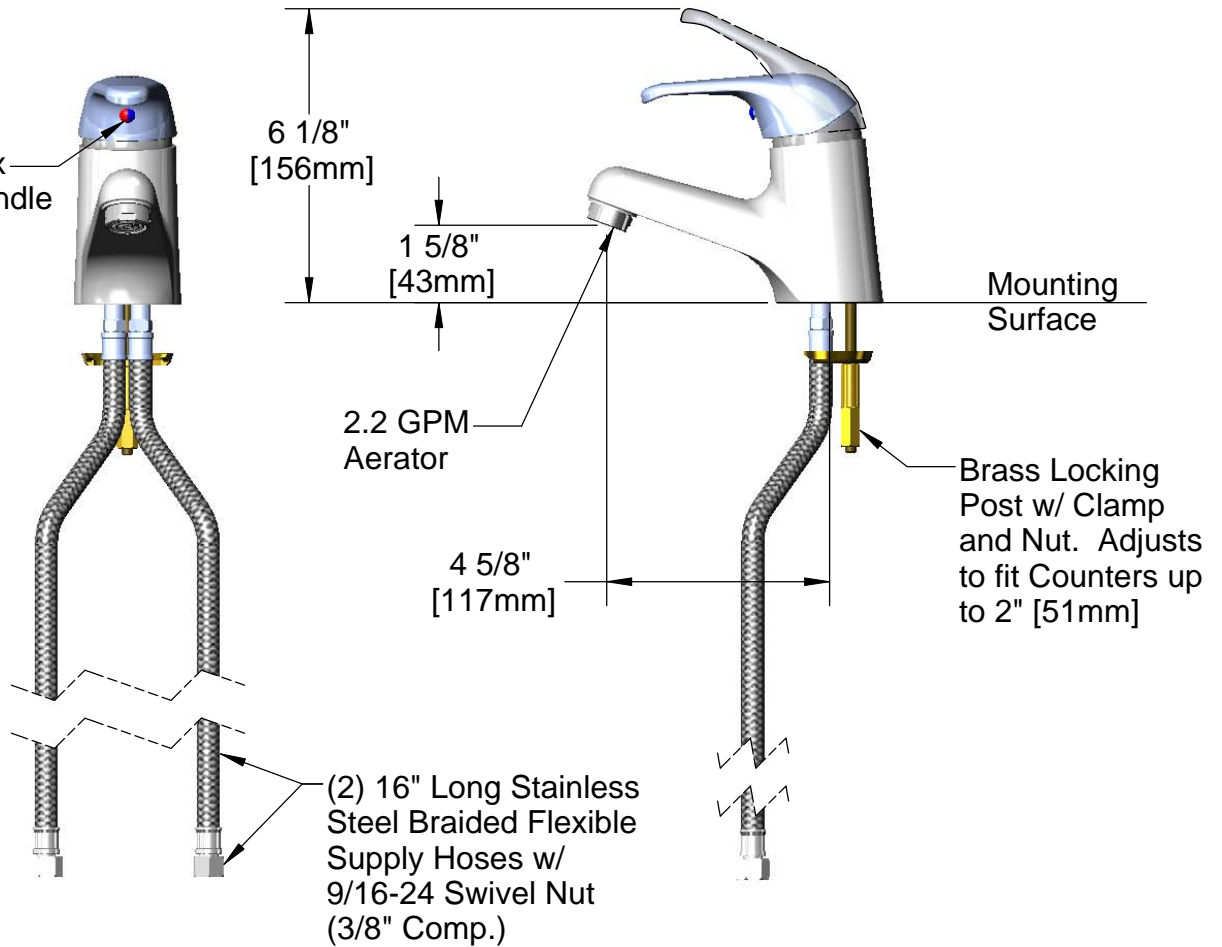
Contractor _____

Architect/Engineer _____



ADA Compliant

Removable Index for Access to Handle Fastening Screw (2.5mm Hex Key Required)



Note: Faucet Contains Temperature Limit Adjustment. Remove handle with hex key to access and reposition stop to the left or right of original position for lower or higher maximum temperature

Rough-in: ϕ 1 1/2" [38mm] Hole

Product Specifications:
Single Lever Faucet:
Rigid Base, Ceramic Cartridge w/ Temperature Limit Adjustment, and Flexible Supplies

Drawn	Checked	Approved
DMH	KJG	JHB
Scale:	Date:	
1:4	02/16/11	



T&S BRASS AND BRONZE WORKS, INC.

2 Saddleback Cove / P.O. Box 1088
 Travelers Rest, SC 29690



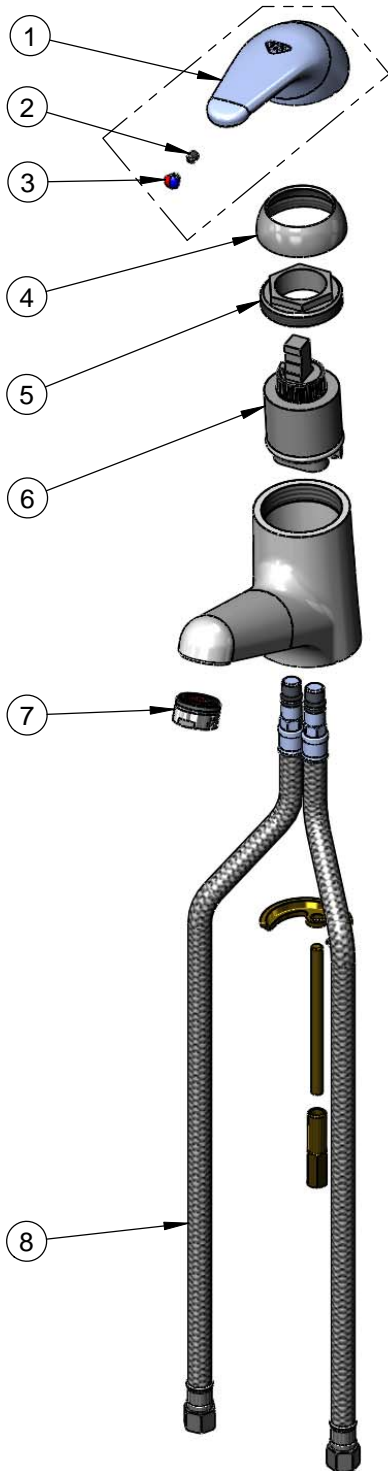
REG. #A2601
 ISO #9001

Model No.

B-2701

Item No.

Travelers Rest, SC: 800-476-4103 • Simi Valley, CA: 800-423-0150 • Fax: 864-834-3518 • www.tsbrass.com



ITEM NO.	SALES NO.	DESCRIPTION
1	013113-45	Handle, Single Lever
2	016675-45	Set Screw
3	014173-45	Index, Temperature
4	016661-45	Trim Ring
5	016663-45	Locking Nut
6	013111-45	Cartridge Assembly
7	016671-45	Aerator, 2.2 GPM
8	016879-45	Supply Hose, 9/16-24 (3/8 Comp.) x 1/8 NPSM

Product Specifications:
 Single Lever Faucet:
 Rigid Base, Ceramic Cartridge w/ Temperature
 Limit Adjustment, and Flexible Supplies

Drawn DMH	Checked KJG	Approved JHB
Scale: NTS		Date: 02/16/11