

T&S BRASS AND BRONZE WORKS, INC.

2 Saddleback Cove / P.O. Box 1088

Travelers Rest, SC 29690



REG. #A2601
ISO #9001

Model No.

B-2703

Item No.

Travelers Rest, SC: 800-476-4103 • Simi Valley, CA: 800-423-0150 • Fax: 864-834-3518 • www.tsbrass.com

This Space for Architect/Engineer Approval

Job Name _____ Date _____

Model Specified _____ Quantity _____

Customer/Wholesaler _____

Contractor _____

Architect/Engineer _____



ADA Compliant

Removable Index
for Access to Handle
Fastening Screw
(2.5mm Hex Key
Required)

Polished Chrome,
Forged Brass
Deckplate

4"
[102mm]

6"
[152mm]

6 7/16"
[164mm]

1 15/16"
[49mm]

2.2 GPM
Aerator

4 5/8"
[118mm]

Mounting
Surface

Brass Locking
Post w/ Clamp
and Nut. Adjusts
to fit Counters up
to 2" [51mm]

(2) 16" Long Stainless
Steel Braided Flexible
Supply Hoses w/
9/16-24 Swivel Nut
(3/8" Comp.)

Rough-in:

Ø 1 1/2" [38mm] Center Hole

Ø 1 1/8" [28mm] Side Holes (4" c/c)

Note: Faucet Contains Temperature Limit Adjustment.
Remove handle with hex key to access and reposition
stop to the left or right of original position for lower or
higher maximum temperature

Product Specifications:

Single Lever Faucet:
Rigid Base, 4" Deckplate, Ceramic Cartridge w/ Temperature
Limit Adjustment, and Flexible Supplies

Drawn

DMH

Checked

KJG

Approved

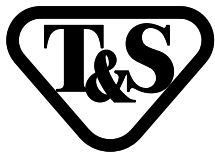
JHB

Scale:

1:4

Date:

02/16/11



T&S BRASS AND BRONZE WORKS, INC.

2 Saddleback Cove / P.O. Box 1088
Travelers Rest, SC 29690



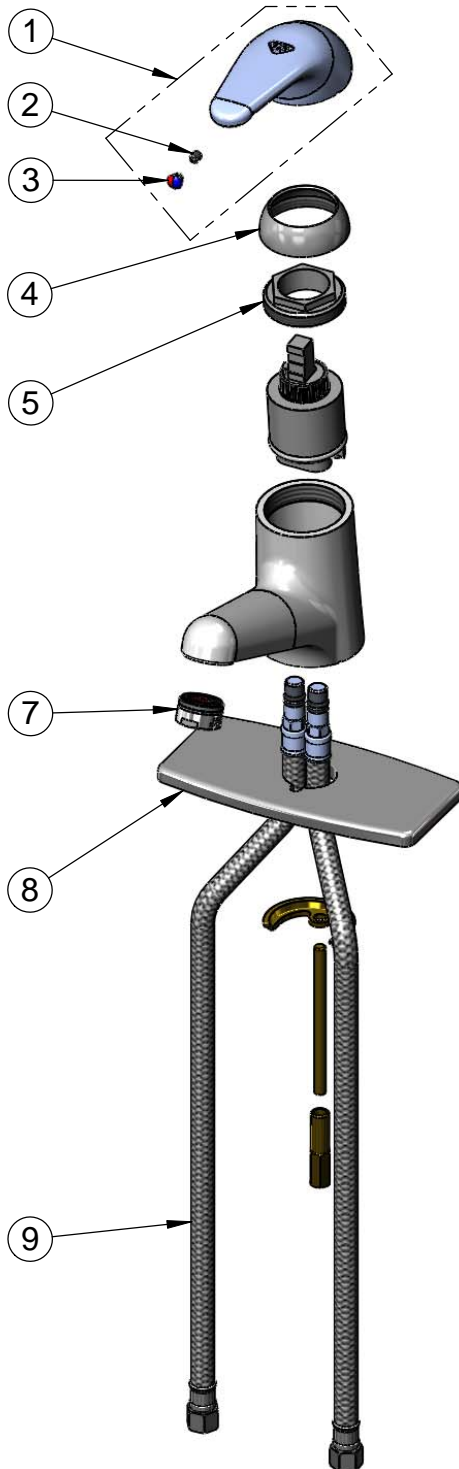
REG. #A2601
ISO #9001

Model No.

B-2703

Item No.

Travelers Rest, SC: 800-476-4103 • Simi Valley, CA: 800-423-0150 • Fax: 864-834-3518 • www.tsbrass.com



ITEM NO.	SALES NO.	DESCRIPTION
1	013113-45	Handle, Single Lever
2	016675-45	Set Screw
3	014173-45	Index, Temperature
4	016661-45	Trim Ring
5	016663-45	Locking Nut
6	013111-45	Cartridge Assembly
7	016671-45	Aerator, 2.2 GPM
8	013824-40	4" Deckplate
9	016879-45	Supply Hose, 9/16-24 (3/8 Comp.) x 1/8 NPSM

Product Specifications:
Single Lever Faucet:
Rigid Base, 4" Deckplate, Ceramic Cartridge w/ Temperature
Limit Adjustment, and Flexible Supplies

Drawn

DMH

Checked

KJG

Approved

JHB

Scale:

NTS

Date:

02/16/11