



T&S BRASS AND BRONZE WORKS, INC.

2 Saddleback Cove / P.O. Box 1088
Travelers Rest, SC 29690



REG. #A2601
ISO #9001

Model No.

B-3952-VR

Item No.

Travelers Rest, SC: 800-476-4103 Simi Valley, CA: 800-423-0150 Fax: 864-834-3518 www.tsbrass.com

This Space for Architect/Engineer Approval

Job Name _____ Date _____

Model Specified _____ Quantity _____

Customer/Wholesaler _____

Contractor _____

Architect/Engineer _____

Recessed Hex Screw Requires
1/8" Hex Key for Installation and
Removal of Strainer

Vandal Resistant
Flat Strainer

$\phi 4 \frac{7}{16}"$
[113mm]

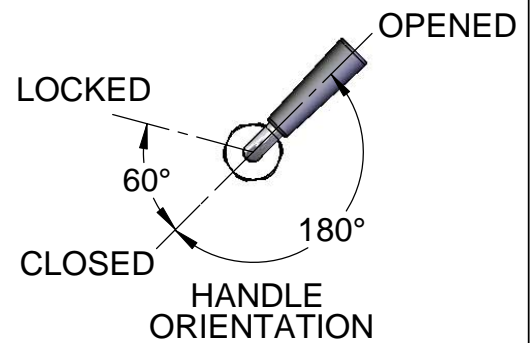
4 1/2"
[114mm]

2 5/8"
[68mm]

2" NPT Male Thread,
1-1/2" NPT Female Thread

12 1/4" $\pm 1/4"$
[312mm]

Twist Handle w/
Heat Resistant
Plastic Grip (Shown
in Open Position)



Product Specifications:

Rotary Waste Valve w/ Twist Handle, 3 1/2" Sink
Opening, 2" NPT Male / 1-1/2" NPT Female Outlet,
Vandal Resistant Flat Strainer

Drawn
GEF

Checked
DMH

Approved
JHB

Scale:

1:4

Date:

01/14/10



T&S BRASS AND BRONZE WORKS, INC.

2 Saddleback Cove / P.O. Box 1088
Travelers Rest, SC 29690



REG. #A2601
ISO #9001

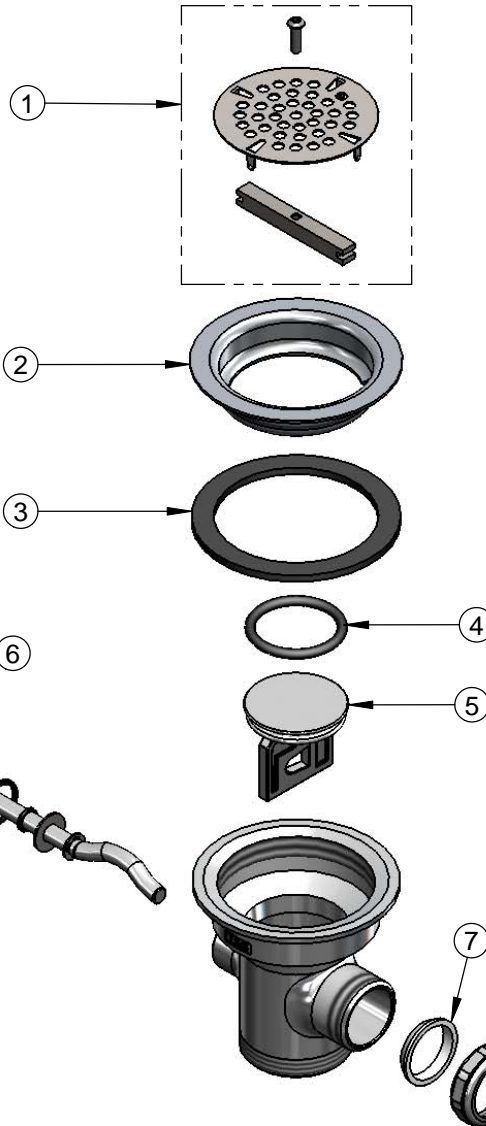
Model No.

B-3952-VR

Item No.

Travelers Rest, SC: 800-476-4103 Simi Valley, CA: 800-423-0150 Fax: 864-834-3518 www.tsbrass.com

ITEM NO.	SALES NO.	DESCRIPTION
1	010386-45VR	Vandal Resistant Locking Flat Strainer, 3-1/2"
2	010384-45	Flange, 3 1/2" Face
3	010382-45	Gasket, 3 1/2" Face Flange
4	010389-45	O-Ring, Plunger
5	010388-45	Plunger, Twist Drain
6	010393-45	Rod Assembly, Twist
7	010390-45	Ferrule, Coupling Nut
8	010391-45	Nut, Coupling For Twist Drain



Also Furnished w/ Sealing
Cap When Overflow Tube
Coupling Nut is Not Used.
PN# 012640-45

Product Specifications:

Rotary Waste Valve w/ Twist Handle, 3 1/2" Sink
Opening, 2" NPT Male / 1-1/2" NPT Female Outlet,
Vandal Resistant Flat Strainer

Drawn GEF	Checked DMH	Approved JHB
Scale: 1:4	Date: 01/14/10	