



T&S BRASS AND BRONZE WORKS, INC.

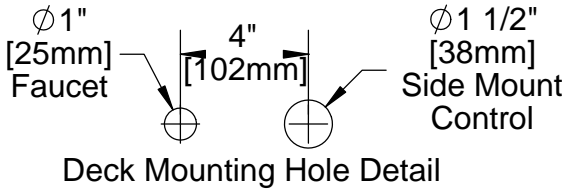
2 Saddleback Cove / P.O. Box 1088
Travelers Rest, SC 29690

Model No.

EC-3100-SM

Item No.

Travelers Rest, SC: 800-476-4103 • Simi Valley, CA: 800-423-0150 • Fax: 864-834-3518 • www.tsbrass.com



This Space for Architect/Engineer Approval

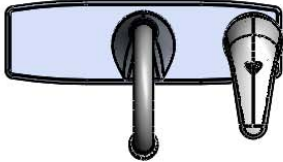
Job Name _____ Date _____

Model Specified _____ Quantity _____

Customer/Wholesaler _____

Contractor _____

Architect/Engineer _____



B-2740 Side Mount Control regulates Water Temperature and ON/OFF Setting.
 Note: To ensure proper operation of Sensor Faucet, Side Mount Control should remain in the OPEN position at all times.

3 5/8" x 4 3/16" x 2" Deep
 [92mm x 106mm x 51mm]
 Water Resistant Control Module Box (Blue)
 w/ Internal Flow Control Setting Switches,
 AC or DC operated w/ (4) AA Batteries.
 Hardwire Capable using Terminals on Back

Rigid Gooseneck w/
 2.2 GPM
 Vandal Resistant
 Aerator

10" Chrome Plated
 Forged Brass
 Deck Plate

4" [102mm]
 Removable
 Strainer
 24" [610mm]
 Sensor Cable



1/2" NPSM x
 1/4" NPSM
 18" [457mm] Long
 Flexible St. Steel Hose
 (1)

1/2" NPSM, 13" [330mm]
 Flex. St. Steel Hose for
 Tempered Water (1).
 Connect to Control Module
 using 1/2" Close Nipple.

Check Valve Asm. for
 Crossflow Prevention
 (2)

100-240 VAC Adapter
 w/ 144" [3658mm] Long
 Double Power Cord.
 (Remove Rubber Plugs
 on Module and Cable
 to Connect)

3/8" Compression, 17" [432mm]
 Flex. St. Steel Hose (2)

$\phi 1/8"$ [3mm]
 Pin installed in
 Faucet base
 for Anti-rotation
 feature. Remove
 pin if desired.

Note: Box may contain extra hoses that are not needed and may be discarded after final installation.



NOTE: Supply Stops by Others

Product Specifications:

Chrome Plated Brass Electronic Faucet: Deck Mount Rigid Gooseneck w/ VR Aerator, Side Mount Temperature Control, AC/DC Control Module w/ Internal Flow Control Switches, 17" Long Hot & Cold Supply Hoses w/ Check Valve Assemblies

| | | |
|----------------------|--------------------------|------------------------|
| Drawn KJG | Checked GEF | Approved JHB |
| Scale: 1:7 | Date: 03/30/12 | |



T&S BRASS AND BRONZE WORKS, INC.

2 Saddleback Cove / P.O. Box 1088
Travelers Rest, SC 29690

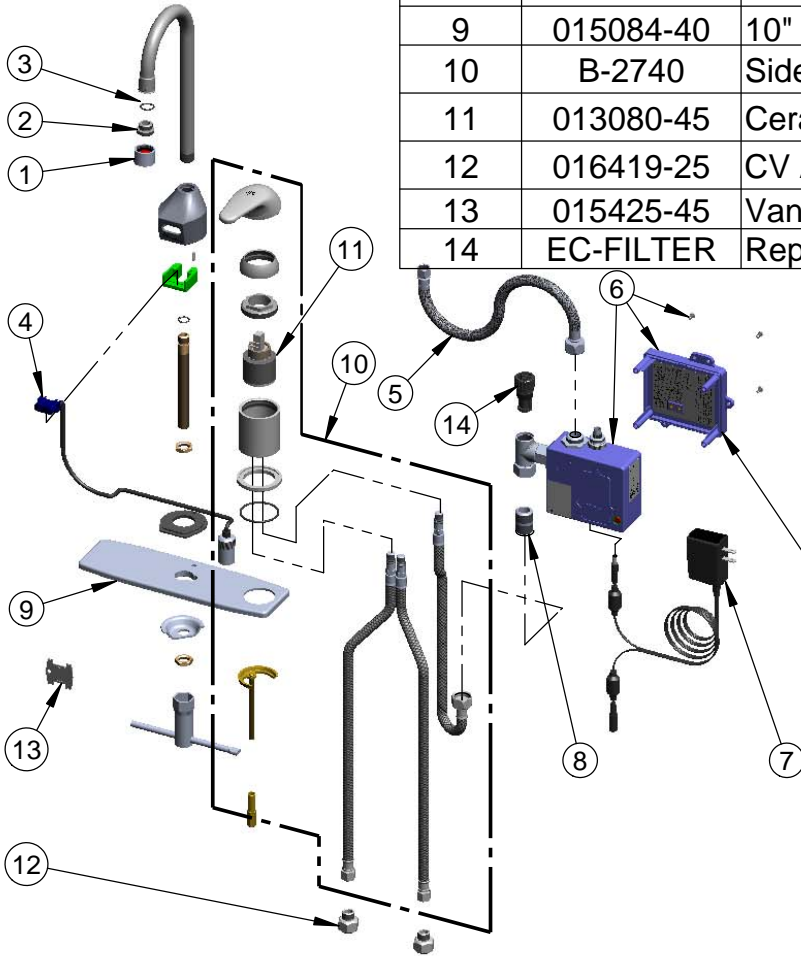
Model No.

EC-3100-SM

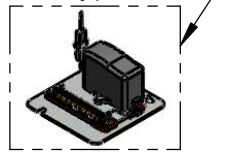
Item No.

Travelers Rest, SC: 800-476-4103 • Simi Valley, CA: 800-423-0150 • Fax: 864-834-3518 • www.tsbrass.com

| ITEM NO. | SALES NO. | DESCRIPTION |
|----------|-----------|---|
| 1 | B-0199-06 | VR Aerator w/ Key |
| 2 | 044A | 3/8" to Aerator Adapter |
| 3 | 006575-45 | -015 O-Ring |
| 4 | 017195-45 | Angled Sensor w/ Cable |
| 5 | 016297-45 | Inlet Hose, Faucet, 1/2" NPSM-F x 1/4" NPSM-F |
| 6 | 016647-45 | ChekPoint Module (Blue) |
| 7 | 5EF-0002 | Double Gang, Plug-in AC Transformer |
| 8 | 002534-25 | Close Nipple, 1/2" x 1 5/32" Lg Rough Chrome |
| 9 | 015084-40 | 10" Deck Plate w/ Side Mount Hole |
| 10 | B-2740 | Side Mount Control w/ Hoses & Ceramic Crtg |
| 11 | 013080-45 | Ceramic Cartridge, B-2730 |
| 12 | 016419-25 | CV Asm, 3/8" Comp-F x 3/8" Comp-M |
| 13 | 015425-45 | Vandal Resistant Key |
| 14 | EC-FILTER | Replacement Filter |



A maximum of (8) ChekPoint Faucets can be hardwire connected and powered by ChekPoint Hardwire AC Transformer. EC-HARDWIRE (Sold Separately)



Label for Flow Control Switch Settings is located on Inside of Back Cover.

Flow Control Switches are located inside Module Housing in Black Box next to Battery Compartment.
*Switches are set to DEFAULT position:
Auto Time Out = 10 seconds
Shut Off Delay = 1 second
Auto Flush = OFF

Remove (4) screws and back cover to access switches.

***Available Water Flow Control Selections:**

- (6) Auto Time Out Selections - 10 sec, 25 sec, 45 sec, 60 sec, 3 min, 20 min
- (4) Shut Off Delay Selections - 1 sec, 2 sec, 4 sec, 10 sec
- Auto Flush for 30 Seconds After Every 12 Inactive Hours - ON or OFF

Product Specifications:
Chrome Plated Brass Electronic Faucet: Deck Mount Rigid Gooseneck w/ VR Aerator, Side Mount Temperature Control, AC/DC Control Module w/ Internal Flow Control Switches, 17" Long Hot & Cold Supply Hoses w/ Check Valve Assemblies

| | | |
|----------------------|-----------------------|--------------------------|
| Drawn KJG | Checked GEF | Approved JHB |
| Scale: NTS | | Date: 03/30/12 |