



# T&S BRASS AND BRONZE WORKS, INC.

2 Saddleback Cove / P.O. Box 1088  
Travelers Rest, SC 29690



Model No.

EC-3101-VF05

Item No.

Travelers Rest, SC: 800-476-4103 Simi Valley, CA: 800-423-0150 Fax: 864-834-3518 www.tsbrass.com

This Space for Architect/Engineer Approval

Job Name \_\_\_\_\_ Date \_\_\_\_\_

Model Specified \_\_\_\_\_ Quantity \_\_\_\_\_

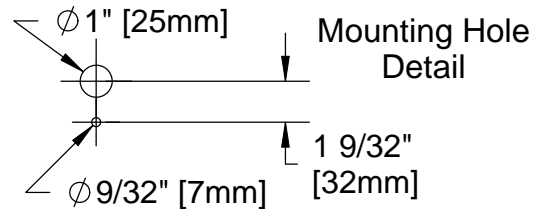
Customer/Wholesaler \_\_\_\_\_

Contractor \_\_\_\_\_

Architect/Engineer \_\_\_\_\_



ADA Compliant



Rigid Gooseneck  
w/ 2.2 GPM Vandal  
Resistant Aerator  
(Optional 0.5 GPM  
VR Spray Device  
Included)

1/2" NPSM x 3/8" NPSM  
30" [762mm] Long Flexible  
St. Steel Hose (1)

24" [610mm]  
Sensor Cable

Removable  
Strainer

Temperature  
Mixing Valve  
w/ Integral  
Check Valves

3 5/8" x 4 3/16" x 2" Deep  
[92mm x 106mm x 51mm]  
Water Resistant Control Module Box (Blue)  
w/ Internal Flow Control Setting Switches  
AC or DC operated w/ (4) AA Batteries

100-135 VAC Adapter  
w/ 144" [3658mm] Long  
Power Cord.  
(Remove Rubber Plugs  
on Module and Cable  
to Connect)

Furnished w/ (2)  
3/8" Compression x 1/2" NPSM  
18" [457mm] Flex. St. Steel Supply Hose

Suitable for Mounting  
Surfaces Up To  
15/16" [24mm] Thick

Requires  
1" [25mm]  
Mounting Hole

Furnished  
w/ Short EI  
For Restricted  
Space  
Installations

Unscrew Set  
Screw in Body  
to desired height  
for Anti-rotation  
feature.  
(See Mounting  
Hole Detail)

**NOTE:** Supply Stops by Others

Product Specifications: Chrome Plated Brass Electronic Faucet: Wall Mt. Rigid Gooseneck w/ VR Aerator, Opt. 0.5 GPM VR Spray Device, AC/DC Cont. Module with Internal Flow Cont. Setting Switches, Temp. Cont. Mixing Valve w/ Integral Check Valves 18" Lg Hot & Cold Supply Stop Flexible Connector Hoses

Drawn

GEF

Checked

DMH

Approved

JHB

Scale:

NTS

Date:

08/23/10



# T&S BRASS AND BRONZE WORKS, INC.

2 Saddleback Cove / P.O. Box 1088  
Travelers Rest, SC 29690



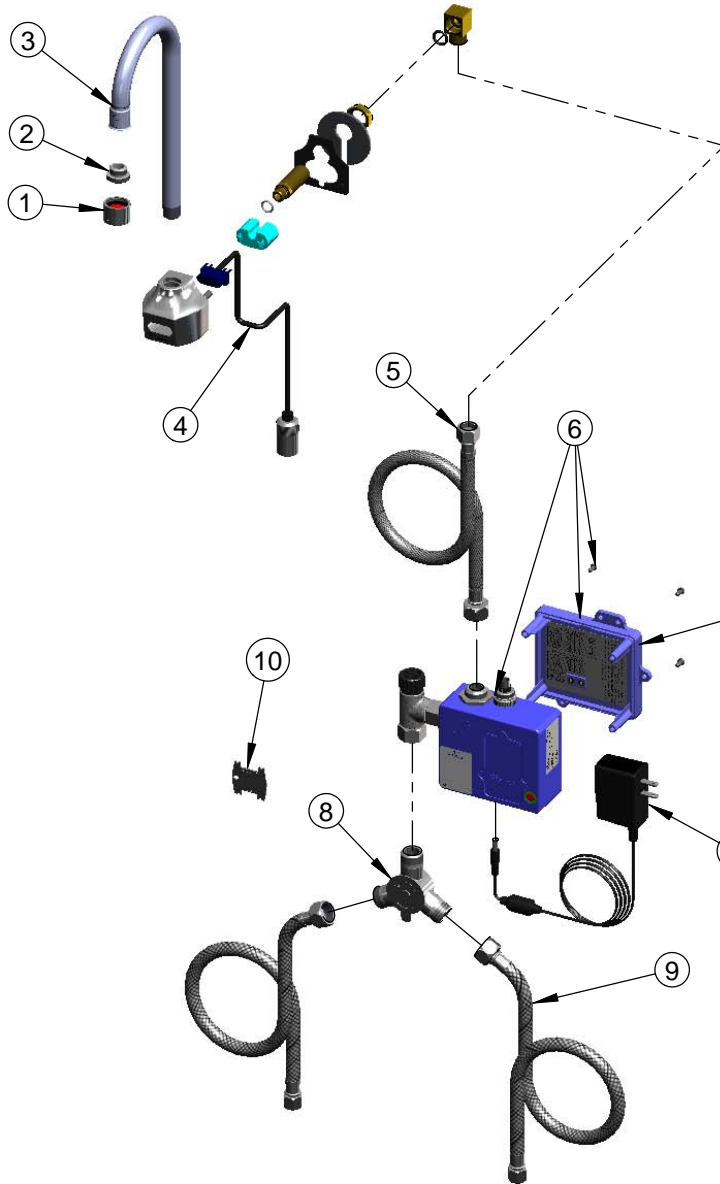
REG. #A2601  
ISO #9001

Model No.

EC-3101-VF05

Item No.

Travelers Rest, SC: 800-476-4103 Simi Valley, CA: 800-423-0150 Fax: 864-834-3518 www.tsbrass.com

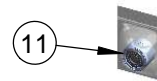


ITEM NO.	SALES NUMBER	DESCRIPTION
1	B-0199-06	VR Aerator w/ Key
2	044A	3/8" to Aerator Adapter
3	006575-45	-015 O-Ring
4	017195-45	Angled Sensor w/ Cable
5	016325-45	Inlet Hose, Faucet, 1/2" NPSM-F x 3/8" NPSM-F
6	016647-45	ChekPoint Module (Blue)
7	5EF-0002	A/C Transformer
8	5EF-0006	Mechanical Mixing Valve
9	5EF-0005	Supply Hose, 9/16-24 Female x 1/2" NPSM
10	015425-45	Vandal Resistant Key
11	B-0199-06-N05	0.5 GPM VR Spray Device, 55/64-27 Female

Label for Flow Control Switch Settings is located on Inside of Back Cover.

Flow Control Switches are located inside Module Housing in Black Box next to Battery Compartment.  
\*Switches are set to DEFAULT position:  
Auto Time Out = 10 seconds  
Shut Off Delay = 1 second  
Auto Flush = OFF

Remove (4) screws and back cover to access switches.



Optional 0.5 GPM  
VR Non-Aerated Spray  
Device Included

## \*Available Water Flow Control Selections:

(6) Auto Time Out Selections - 10 sec, 25 sec, 45 sec, 60 sec, 3 min, 20 min

(4) Shut Off Delay Selections - 1 sec, 2 sec, 4 sec, 10 sec

Auto Flush for 30 Seconds After Every 12 Inactive Hours - ON or OFF

Product Specifications: Chrome Plated Brass Electronic Faucet: Wall Mt. Rigid Gooseneck w/ VR Aerator, Opt. 0.5 GPM VR Spray Device, AC/DC Cont. Module with Internal Flow Cont. Setting Switches, Temp. Cont. Mixing Valve w/ Integral Check Valves 18" Lg Hot & Cold Supply Stop Flexible Connector Hoses

Drawn	Checked	Approved
GEF	DMH	JHB
Scale:	Date:	
NTS	08/23/10	