



# T&S BRASS AND BRONZE WORKS, INC.

2 Saddleback Cove / P.O. Box 1088  
Travelers Rest, SC 29690

Model No.

**EC-3101TMVHGF10**

Item No.

Travelers Rest, SC: 800-476-4103 • Simi Valley, CA: 800-423-0150 • Fax: 864-834-3518 • www.tsbrass.com



**ADA Compliant**



This Space for Architect/Engineer Approval

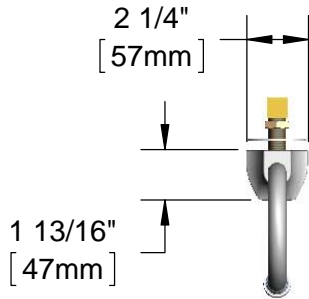
Job Name \_\_\_\_\_ Date \_\_\_\_\_

Model Specified \_\_\_\_\_ Quantity \_\_\_\_\_

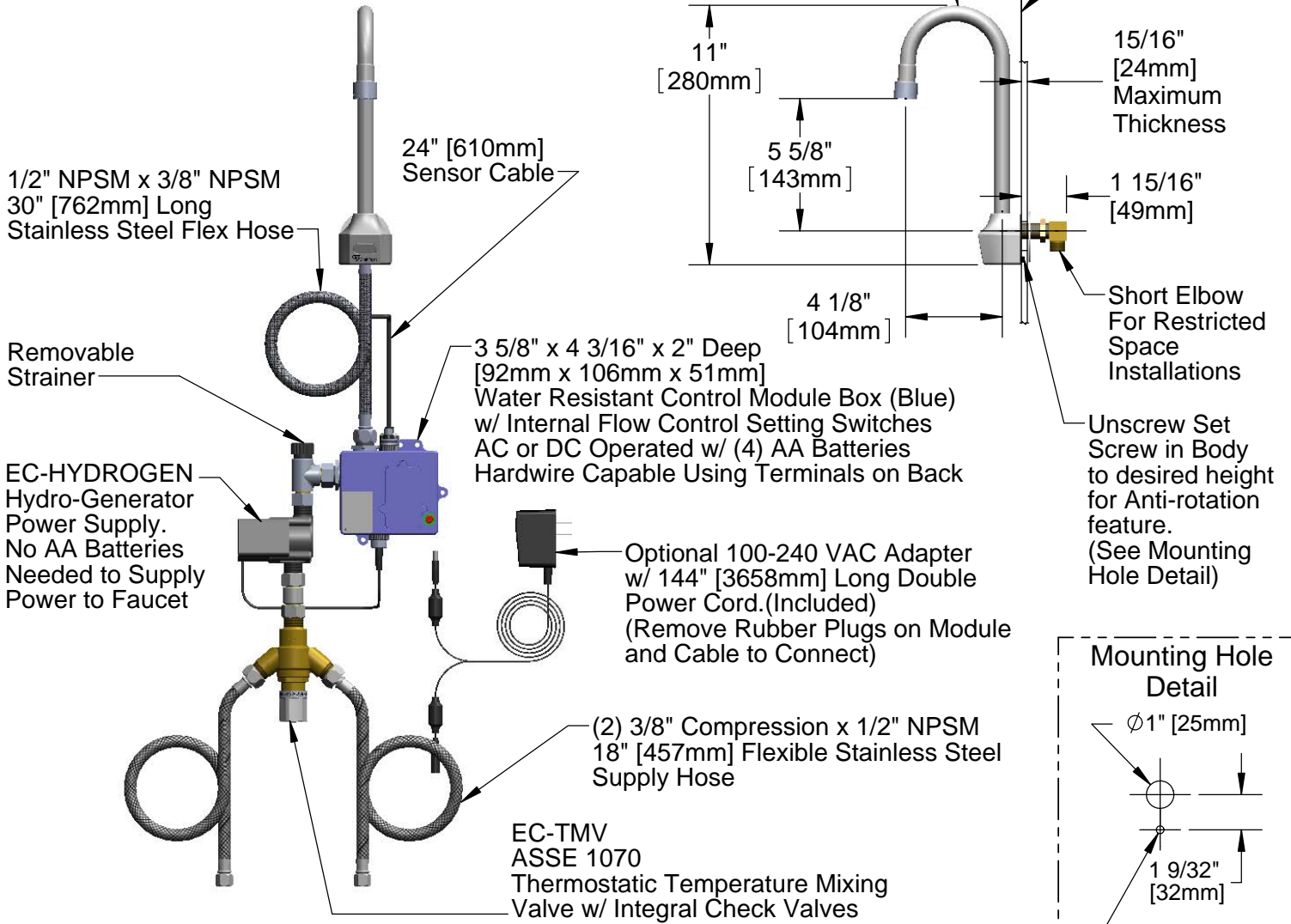
Customer/Wholesaler \_\_\_\_\_

Contractor \_\_\_\_\_

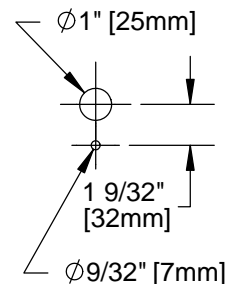
Architect/Engineer \_\_\_\_\_



Rigid Gooseneck w/ 2.2 GPM Vandal Resistant Aerator.  
Optional B-0199-06-F10 1.0 GPM VR Aerator (Included)



### Mounting Hole Detail



#### Product Specifications:

Chrome Plated Brass Electronic Faucet: Wall Mount Rigid Gooseneck w/ Optional 1.0 GPM VR Aerator, AC/DC Control Module w/ Internal Flow Control Setting Switches, Thermostatic Temperature Control Mixing Valve w/ Integral Check Valves, Hydro-Generator, 18" Lg Hot & Cold Supply Stop Flexible Connector Hoses

Drawn

**GEF**

Checked

**DMH**

Approved

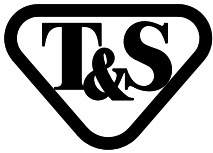
**JHB**

Scale:

**1:7**

Date:

**08/01/12**



# T&S BRASS AND BRONZE WORKS, INC.

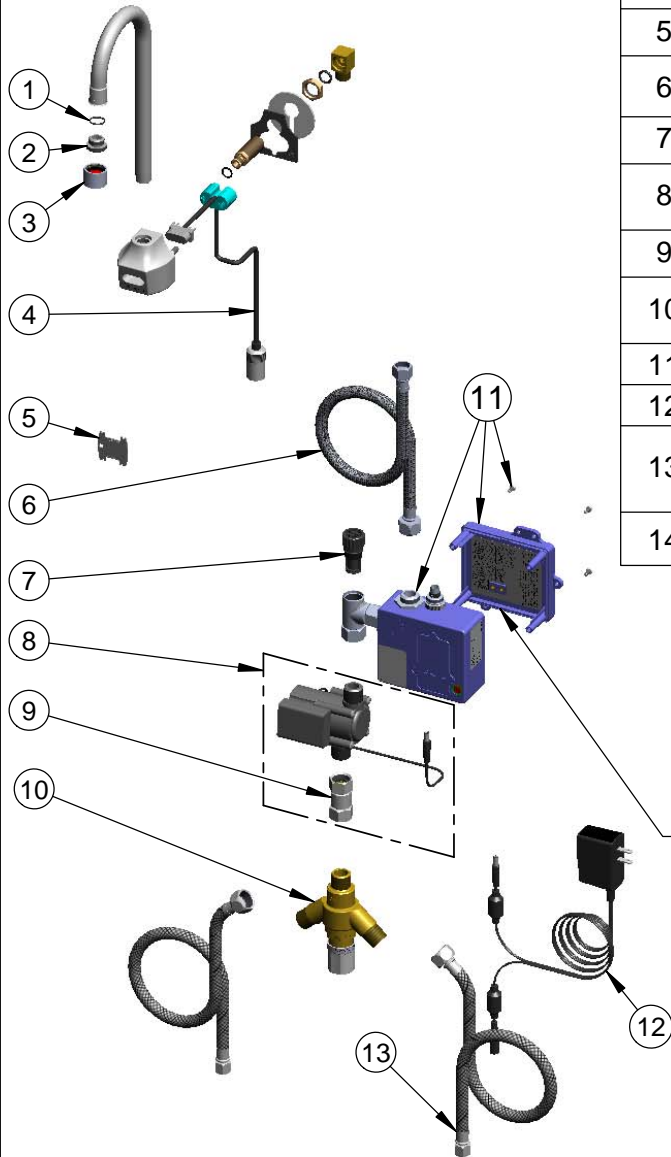
2 Saddleback Cove / P.O. Box 1088  
Travelers Rest, SC 29690

Model No.

**EC-3101TMVHGF10**

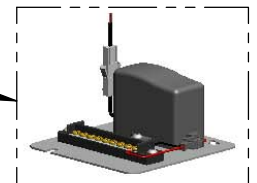
Item No.

Travelers Rest, SC: 800-476-4103 • Simi Valley, CA: 800-423-0150 • Fax: 864-834-3518 • www.tsbrass.com



ITEM NO.	SALES NO.	DESCRIPTION
1	006575-45	-015 O-Ring
2	044A	3/8" to Aerator Adapter
3	B-0199-06	VR Aerator w/ Key
4	017195-45	Angled Sensor w/ Cable
5	015425-45	Vandal Resistant Key
6	016325-45	Inlet Hose, 1/2" NPSM-F x 3/8" NPSM-F
7	EC-FILTER	Replacement Filter
8	EC-HYDROGEN	Hydro-Generator and Swivel Coupling
9	017506-45	1/2" NPSM Swivel Coupling
10	EC-TMV	ASSE 1070 Thermostatic Mixing Valve
11	016647-45	ChekPoint Module (Blue)
12	5EF-0002	A/C Transformer
13	5EF-0005	Supply Hose, 9/16-24 Female x 1/2" NPSM
14	B-0199-06-F10	VR Aerator, 1.0 GPM, 55/64-27 Female

Maximum of (8) ChekPoint Faucets Can be Hardwire Connected and Powered by ChekPoint Hardwire AC Transformer EC-HARDWIRE (Sold Separately)



Label for Flow Control Switch Settings is Located on Inside Back Cover.

Flow Control Switches are Located Inside Module Housing in Black Box Next to Battery Compartment.  
\*Switches are Set to DEFAULT Position:  
Auto Time Out = 10 Seconds  
Shut Off Delay = 1 Second

Remove (4) Screws and Back Cover to Access Switches.

**\*Available Water Flow Control Selections:**

(6) Auto Time Out Selections - 10 sec, 25 sec, 45 sec, 60 sec, 3 min, 20 min

(4) Shut Off Delay Selections - 1 sec, 2 sec, 4 sec, 10 sec

Auto Flush for 30 Seconds After Every 12 Inactive Hours - ON or OFF

**Product Specifications:**

Chrome Plated Brass Electronic Faucet: Wall Mount Rigid Gooseneck w/ Optional 1.0 GPM VR Aerator, AC/DC Control Module w/ Internal Flow Control Setting Switches, Thermostatic Temperature Control Mixing Valve w/ Integral Check Valves, Hydro-Generator, 18" Lg Hot & Cold Supply Stop Flexible Connector Hoses

Drawn	Checked	Approved
<b>GEF</b>	<b>DMH</b>	<b>JHB</b>
Scale:	Date:	
<b>NTS</b>	<b>08/01/12</b>	