

# T&S BRASS AND BRONZE WORKS, INC.

2 Saddleback Cove / P.O. Box 1088  
Travelers Rest, SC 29690

Model No.

**EC-3103-TMV**

Item No.

Travelers Rest, SC: 800-476-4103 • Simi Valley, CA: 800-423-0150 • Fax: 864-834-3518 • www.tsbrass.com



**ADA Compliant**



This Space for Architect/Engineer Approval

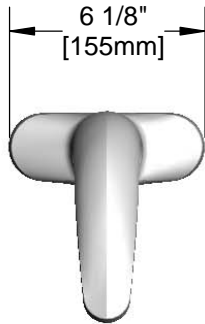
Job Name \_\_\_\_\_ Date \_\_\_\_\_

Model Specified \_\_\_\_\_ Quantity \_\_\_\_\_

Customer/Wholesaler \_\_\_\_\_

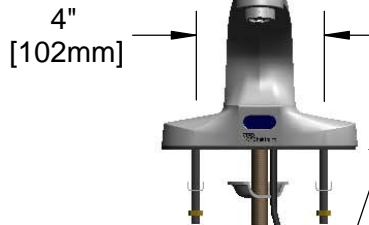
Contractor \_\_\_\_\_

Architect/Engineer \_\_\_\_\_



Solid Cast Brass Spout  
w/ Polish Chrome Plated Finish  
and 2.2 GPM [8.3L/min]  
Vandal Resistant Aerator

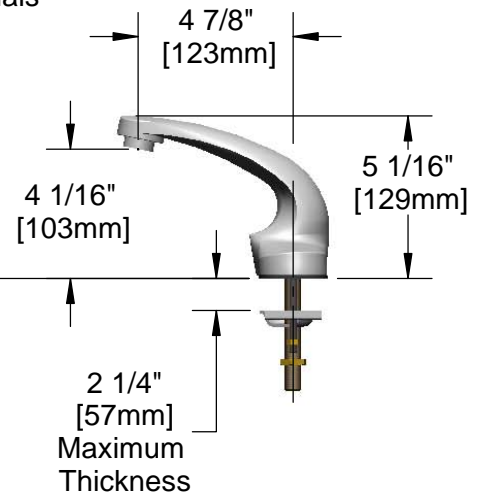
3 5/8" x 4 3/16" x 2" Deep  
[92mm x 106mm x 51mm]  
Water Resistant Control Module Box (Blue)  
w/ Internal Flow Control Setting Switches,  
AC or DC Operated w/ (4) AA Batteries.  
Hardwire Capable Using Terminals  
on Back.



24" [610mm]  
Sensor Cable

Removable  
Strainer

Mounting  
Surface



1/2" NPSM x 1/4" NPSM  
18" [457mm] Long Flexible  
Stainless Steel Hose

100-240 VAC Adapter  
w/ 144" [3658mm] Long  
Double Power Cord.  
(Remove Rubber Plugs  
on Module and Cable  
to Connect)

(2) 3/8" Compression x 1/2" NPSM  
18" [457mm] Flexible Stainless Steel  
Supply Hose

Rough-In Requirement:  
(1) Ø 1" [25mm] Center Shank Mounting Hole &  
(2) 1/2" [13mm] Mounting Stud Holes (on 4" Centers)

EC-TMV  
ASSE 1070 Thermostatic Temperature  
Mixing Valve w/ Integral Check Valves

Product Specifications: Chrome Plated Brass Electronic Faucet: 4" c/c  
Deck Mount Spout w/ VR Aerator, AC/DC Control Module w/  
Internal Flow Control Setting Switches, Thermostatic  
Temperature Control Mixing Valve w/ Integral Check Valves,  
18" Long Hot & Cold Supply Stop Flexible Connector Hoses

Drawn

**GEF**

Checked

**DMH**

Approved

**JHB**

Scale:

**1:6**

Date:

**08/01/12**



# T&S BRASS AND BRONZE WORKS, INC.

2 Saddleback Cove / P.O. Box 1088  
Travelers Rest, SC 29690

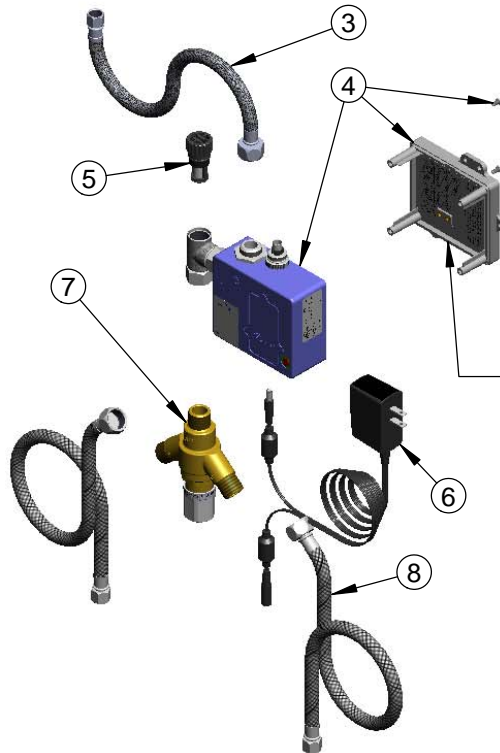
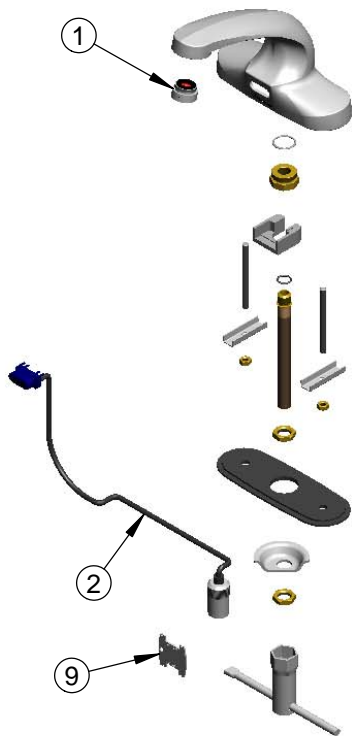
Model No.

**EC-3103-TMV**

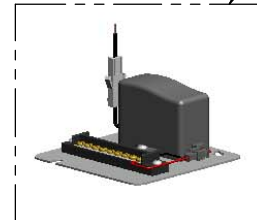
Item No.

Travelers Rest, SC: 800-476-4103 • Simi Valley, CA: 800-423-0150 • Fax: 864-834-3518 • www.tsbrass.com

ITEM NO.	SALES NO.	DESCRIPTION
1	016355-45	VR Housing, 13/16-27 male
2	017195-45	Angled Sensor w/ Cable
3	016297-45	Inlet Hose, Faucet, 1/2" NPSM-F x 1/4" NPSM-F
4	016647-45	ChekPoint Electronic Module (Blue)
5	EC-FILTER	Replacement Filter
6	5EF-0002	A/C Transformer
7	EC-TMV	ASSE 1070 Thermostatic Mixing Valve
8	5EF-0005	Supply Hose, 9/16-24 Female x 1/2" NPSM
9	015425-45	Vandal Resistant Key



Maximum of (8) ChekPoint Faucets Can be Hardwire Connected and Powered by ChekPoint Hardwire AC Transformer EC-HARDWIRE (Sold Separately)



Label for Flow Control Switch Settings is Located on Inside Back Cover.

Flow Control Switches are Located Inside Module Housing in Black Box Next to Battery Compartment.  
\*Switches are Set to DEFAULT Position:  
Auto Time Out = 10 Seconds  
Shut Off Delay = 1 Second

Remove (4) Screws and Back Cover to Access Switches.

## \*Available Water Flow Control Selections:

(6) Auto Time Out Selections - 10 sec, 25 sec, 45 sec, 60 sec, 3 min, 20 min

(4) Shut Off Delay Selections - 1 sec, 2 sec, 4 sec, 10 sec

Auto Flush for 30 Seconds After Every 12 Inactive Hours - ON or OFF

## Product Specifications:

Chrome Plated Brass Electronic Faucet: 4" c/c  
Deck Mount Spout w/ VR Aerator, AC/DC Control Module w/  
Internal Flow Control Setting Switches, Thermostatic  
Temperature Control Mixing Valve w/ Integral Check Valves,  
18" Long Hot & Cold Supply Stop Flexible Connector Hoses

Drawn

**GEF**

Checked

**DMH**

Approved

**JHB**

Scale:

**NTS**

Date:

**08/01/12**