



# T&S BRASS AND BRONZE WORKS, INC.

2 Saddleback Cove / P.O. Box 1088  
Travelers Rest, SC 29690



REG. #A2601  
ISO #9001

Model No.

MPY-2DWV-08-CR

Item No.

Travelers Rest, SC: 800-476-4103 Simi Valley, CA: 800-423-0150 Fax: 864-834-3518 www.tsbrass.com

This Space for Architect/Engineer Approval

Job Name \_\_\_\_\_ Date \_\_\_\_\_

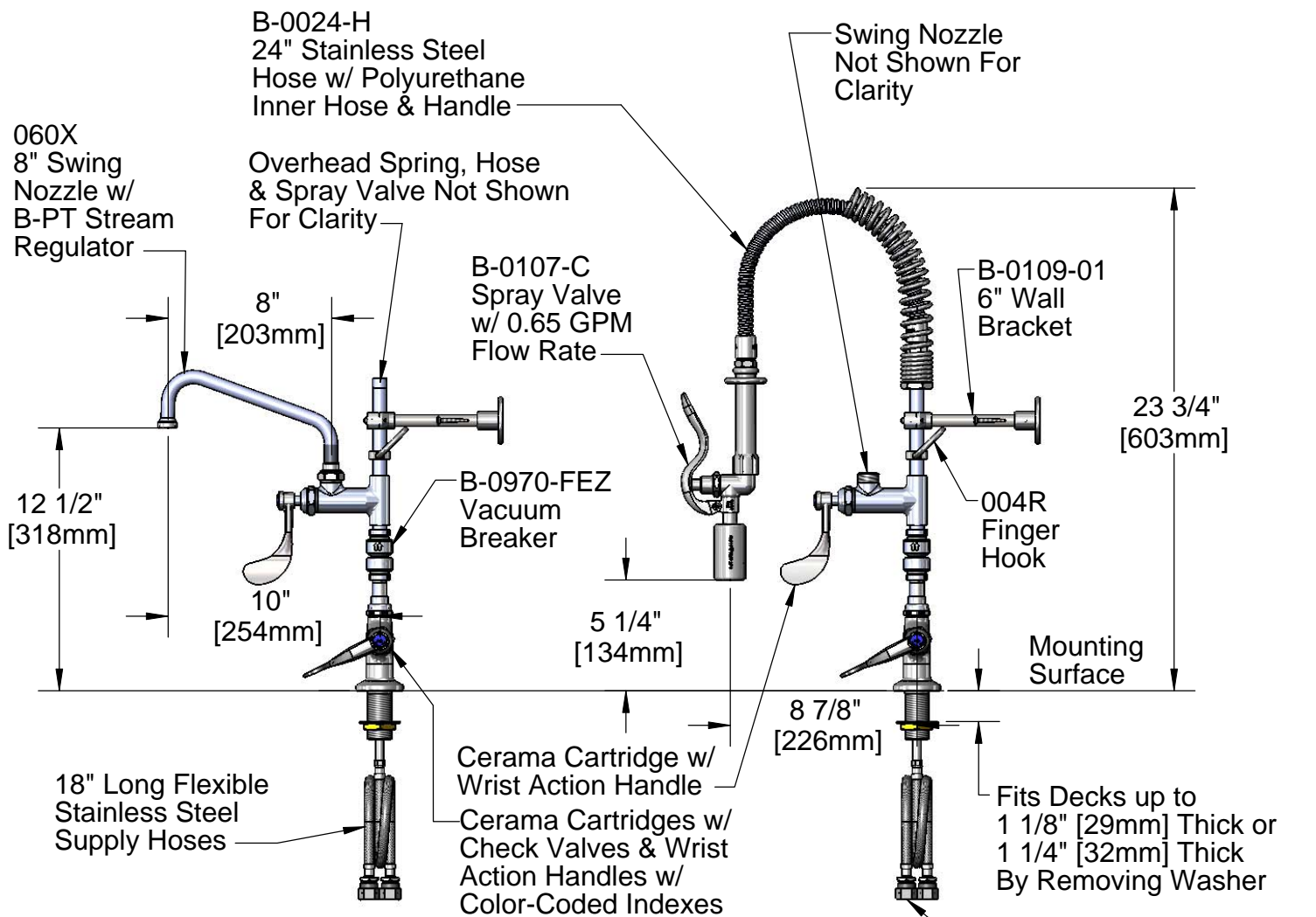
Model Specified \_\_\_\_\_ Quantity \_\_\_\_\_

Customer/Wholesaler \_\_\_\_\_

Contractor \_\_\_\_\_

Architect/Engineer \_\_\_\_\_

**EPAct2005 Compliant  
For Commercial Use Only**



### Note: Rough-In Requirement

$\phi 1 \frac{1}{2}$ " [ $\phi 38$ mm] Hole  
( $\phi 1 \frac{1}{4}$ " [ $\phi 32$ mm] Minimum)

Compression Fittings  
for  $\frac{5}{8}$ " Copper Tubing  
(Remove Compression  
Nut for  $\frac{1}{2}$ " NPSM Male)

### Product Specifications:

Easy Install Pre-Rinse Unit:  
Single Deck Mount Base Mixing Faucet, VB, Add-On Faucet,  
8" Swing Nozzle, Compact Spring & Flex Hose, B-0107-C  
Spray Valve, 6" Wall Bracket & Wrist Action Handles

Drawn  
JRM

Checked  
KJG

Approved  
JHB

Scale:

1:8

Date:

08/16/10



# T&S BRASS AND BRONZE WORKS, INC.

2 Saddleback Cove / P.O. Box 1088  
Travelers Rest, SC 29690



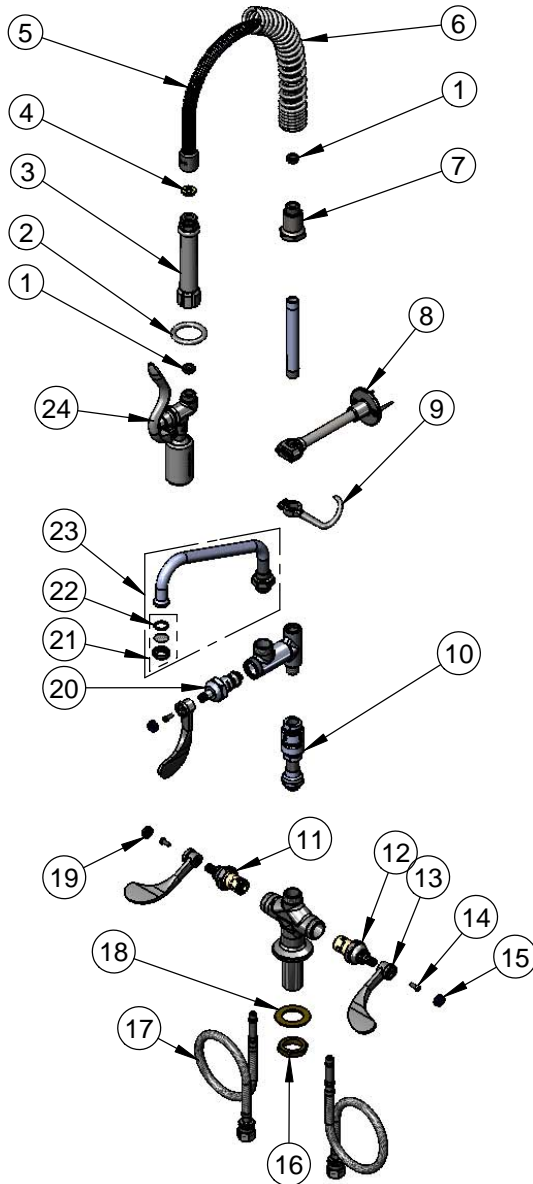
REG. #A2601  
ISO #9001

Model No.

**MPY-2DWV-08-CR**

Item No.

Travelers Rest, SC: 800-476-4103 Simi Valley, CA: 800-423-0150 Fax: 864-834-3518 www.tsbrass.com



ITEM NO.	SALES NO.	DESCRIPTION
1	010476-45	#27 Washer
2	000907-45	Spray Valve Hold Down Ring
3	002987-40	Grip Handle Assembly
4	001014-45	Washer, B-0100 Hose Barrel
5	B-0024-H2A	24" Flex Hose Less Handle
6	016795-45	Compact Spring
7	000821-40	Spring Body
8	B-0109-01	Bracket Assembly, 6" Wall
9	004R	Finger Hook Assembly
10	B-0970-FEZ	Easy-Install Vacuum Breaker
11	012394-25	Ceramic Cartridge, RTC w/ Check Valve
12	012395-25	Ceramic Cartridge, LTC w/ Check Valve
13	B-WH4	4" Wrist Action Handle
14	000925-45	Lab Handle Screw
15	001686-45	Blue CW Index
16	000965-45	Lock Nut
17	012534-45	Flexible Connector Hose
18	002290-45	Lock Washer
19	001194-45	Red HW Index
20	011278-25	Ceramic Cartridge RTC
21	B-PT	Stream Regulator Outlet
22	001048-45	Nozzle Tip Washer
23	060X	8" Swing Nozzle
24	B-0107-C	Low Flow Spray Valve

## Product Specifications:

Easy Install Pre-Rinse Unit:  
Single Deck Mount Base Mixing Faucet, VB, Add-On Faucet,  
8" Swing Nozzle, Compact Spring & Flex Hose, B-0107-C  
Spray Valve, 6" Wall Bracket & Wrist Action Handles

Drawn

**JRM**

Checked

**KJG**

Approved

**JHB**

Scale:

**NTS**

Date:

**08/16/10**