

VICTORY

3779 Champion Blvd – Winston-Salem, NC 27105
 888.845.9800 • Fax: 800.253.5168
www.victoryrefrigeration.com • email: sales@victoryrefrigeration.com

PROJECT: _____
 LOCATION: _____
 ITEM #: _____
 QUANTITY: _____

ULTRASPEC SERIES

AIR CURTAIN REFRIGERATORS

Featuring: **SecureTemp**^{1.0}

STANDARD FEATURES

- Secure-Temp 1.0™ Technology
- LED Lighting
- 20 gauge, Stainless Steel Door(s)
- Expansion Valve Technology
- Stainless Steel Breaker Strips
- Santoprene Door Gaskets with Exclusive 2 Year Warranty
- Dial Thermometer
- Stainless Steel Interior and Exterior
- Lifetime, Energy Saving Thermal Breaker Caps
- Environmentally Safe R-134a Refrigerant
- Plasticized Evaporator Fin Coils
- Non-Electric Condensate Evaporator
- Foamed-in-Place Polyurethane Insulation
- Heavy Duty Cylinder Locks
- Ergonomically Correct Door Handles, Guaranteed for Life
- One Piece, Snap-In Magnetic Door Gasket(s)
- Fifteen Pair (15) Adjustable Stainless Steel Pan Slides
- Stainless Steel Hinges
- Full 270° Door Swing
- Flush Recessed Side Hand Grips
- Rear Mounted Push Bar Handle with Rubber Bumpers
- 71/4" Overall Height Heavy Duty Casters with Locks
- Cord and Plug (see electrical data for details)



SECURE-TEMP 1.0™

Secure-Temp 1.0™ is the industry's first and only full service temperature monitoring solution for your kitchen. Secure-Temp 1.0™ is standard on all Victory models and is HACCP compliant and meets NAFEM's data protocol. There is NO software or monthly monitoring fees. Optional add on kits are available for additional units in your kitchen that you want to monitor.

OPTIONS AND ACCESSORIES

- Change Door Swing
- Optional Voltages

MODELS



Stainless Steel
Exterior and Interior

LONG-DOOR

ACRS-1D-S1-STS

GLASS-DOOR

ACRS-1D-S1-STS-GD

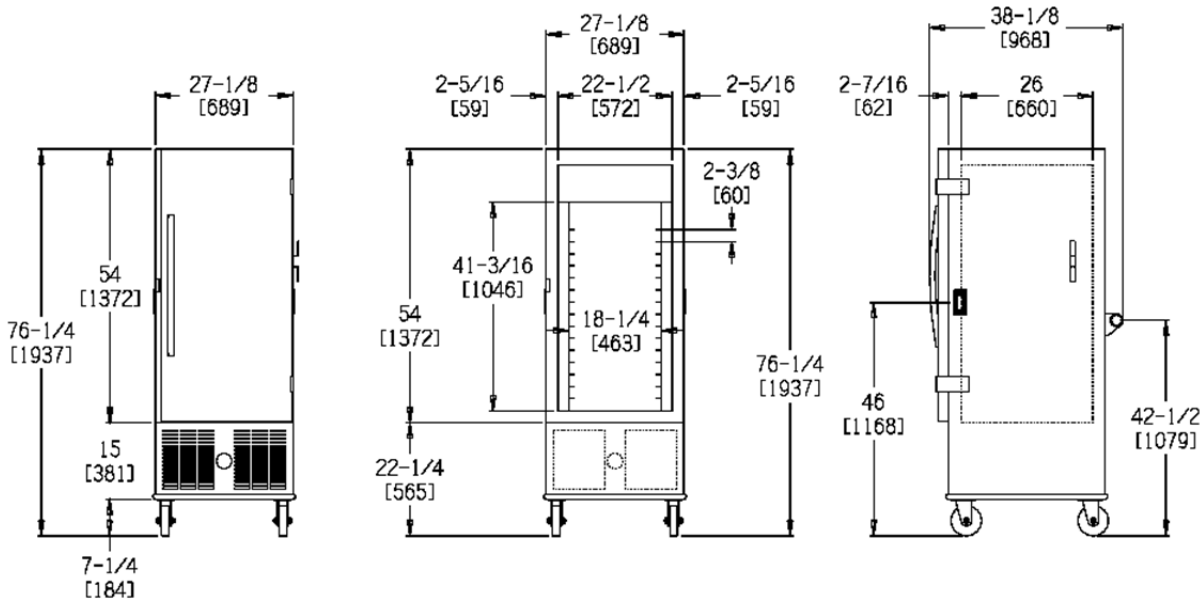


Please refer to www.energystar.gov to view the most up-to-date product listing and performance data

NOTE: Not all marks refer to all models
 3 Year Parts & Labor Warranty • 5 Year Compressor Warranty

Victory Refrigeration specification sheets are available online at www.victoryrefrigeration.com

APPROVALS:



We reserve the right to change specifications and product design without notice. Such revisions do not entitle the buyer to corresponding changes, improvements, additions or replacements for previously purchased equipment. Dimensional tolerances +/- 1/4". Metric dimensions (MM)

CABINET CONSTRUCTION

The cabinet front and doors are constructed of heavy gauge, polished stainless steel to maintain an attractive appearance after years of heavy use. Polyurethane foam insulation throughout ensures the ultimate in energy efficiency. The cabinet interior has strategically designed air ducts on the both sides of the cabinet for ideal air circulation and food product temperature maintenance. When the door is opened, a curtain of cold air blows across the front of the cabinet opening. This keeps the warm air out and cold air in, assuring safe storage during peak service hours. This model is ideal for use in hospitals, catering or any food service operation that is assembling trays for meal service.

DOOR CONSTRUCTION

The doors are heavy gauge, polished stainless steel with a stainless steel interior liner. Each door is provided with a cylinder lock and ergonomically correct vertical handle. The door hinges are stainless steel and allow the door to open 270°. A locking device holds the door open during tray make-up periods.

REFRIGERATION SYSTEM

The motor compressor is mounted at the base of the unit in order to provide a lower center of gravity and easy maneuverability. The cooling coil is located in the cabinet interior at the top of the compartment. Environmentally friendly R-134a refrigerant is efficiently metered by a capillary system providing a constant, safe operating temperature and quick "recovery" under the most demanding conditions. The hermetically sealed-systems are designed to operate at 38°F. Each cooling coil has plasticized fins to resist food acids. All condensate water is disposed of automatically by the energy efficient, non-electric condensate evaporator.

INTERIOR STORAGE ARRANGEMENTS

Each cabinet section is provided with fifteen (15) pair of adjustable, stainless steel pan slides for 18" x 26" pans. Trays are located on 2 1/2 inch centers.

CHARACTERISTICS

1 SECTION

DIMENSIONAL DATA

Capacity Net (cubic ft.)	32.5
Width, Overall (in.)	27 1/8
Depth, Overall (inc. handles)	38
Depth, Door(s) Open 90°	62 7/8
Clear Door Width (in.)	22 1/2
Clear Full-Door Height (in.)	41
Height Overall (inc. 6" legs)	76 1/2
No. Full/Half Doors	1F
Pairs of Pan Slides	15

ELECTRICAL DATA

Cabinet Voltage	115/60/1
Feed Wires	2
Condensing Unit Voltage	115/60/1
NEMA Plug	5-20P
Total Amperes	15.7

REFRIGERATION DATA

Condensing Unit Size	1/2 HP
Refrigerant	R-134a

NOTE: Plug style, voltage and full load amps may vary depending on options selected such as optional voltages and compressor upgrades.

REMOTE APPLICATIONS

See form V-RRDS1 for details of remote refrigeration characteristics by model.

CRATED DIMENSIONS & WTS. HT. WIDTH DEPTH CU. FT. LBS

ONE SECTION	78.36	43	69.88	465
-------------	-------	----	-------	-----

NOTE: In order to provide peak operating performance the cabinet must have a 2 inch all around clearance and 12 inches above the top of the condensing unit. This ensures an adequate air supply and space for routine maintenance and/or service if required.

**** Remote units use R404a refrigerant standard and come with 6" legs.**