

## CHEF BASE REFRIGERATOR

CBR84-1

- Equipped with Secure-Temp 1.0™ Technology™
- 3 Year Parts & Labor Warranty Plus an Additional 2 Year Compressor Warranty
- Exclusive 2 Year Warranty on Santoprene Door Gaskets

**VICTORY ULTRASPEC™**  
FEATURING: **SecureTemp™**  
1.0

Secure-Temp 1.0™ is the industry's first and only full service temperature monitoring solution for your kitchen. Secure-Temp 1.0™ is standard on all Victory models and is HACCP compliant & meets NAFEM's data protocol.

There are NO software or monthly monitoring fees.  
Optional add on kits are available for additional units.

### STANDARD FEATURES

- Secure-Temp 1.0™ Technology
- Full Electronic Control
- Heavy Duty, Fire-Proof, Reinforced Insulated 16 Gauge Top  
*No heat shield required*
- Expansion Valve Technology
- 100% Front Breathing
- **Lifetime Warranty On All Drawers & Slides**
- 12 Gauge Drawer Slides With 3 Stainless Steel Ball Bearings Per Each Drawer Slide
- Santoprene Door Gaskets with Exclusive 2 Year Warranty
- Stainless Steel Exterior & Interior
- Upper Drawers Accommodate two 6" deep 12" x 20" pans  
*Food service pans not included*
- Lower Drawers Accommodate two 4" deep 12" x 20" pans  
*Food service pans not included*

**IMAGE COMING SOON**

### OPTIONS & ACCESSORIES

- Marine Edge
- Flat Top
- Gasket Guards
- Optional Voltages: 220/50/1, 220/60/1



Please refer to [www.enerystar.gov](http://www.enerystar.gov) to view the most up-to-date product listing and performance data

3779 Champion Blvd—Winston-Salem, NC 27105

PH: (888) 845-9800 - Fax: (800) 253-5168

sales@victoryrefrigeration.com www.victoryrefrigeration.com

## CABINET CONSTRUCTION

Heavy-duty construction with stainless steel on top, front, sides, rear and drip guard top. Interior of cabinet is constructed of corrosion-resistant stainless steel. Drawers are equipped with heavy-duty workflow handle. Cabinet integrity is reinforced by use of structural columns. Cabinets are insulated with foamed-in-place polyurethane insulation of 2" thickness for added strength and maximum energy efficiency. Cabinet back and bottom are constructed of galvanized steel. Interior cabinet is made of corrosion resistant stainless steel.

## DRAWER CONSTRUCTION

Drawer frames are constructed of heavy duty stainless steel and are supported on stainless steel telescoping drawer slides with three stainless steel roller bearing wheels for maximum support of stored food product. Upper pull-out drawers accommodate two 6" deep 12" x 20" pans of combinations of 1/6 size pans or larger. Lower pull-out drawers accommodate two 4" deep 12" x 20" pans or combinations of 1/6 size pans or larger. Heavy duty pan divider supports are supplied. Foodservice pans are not included. A snap in type vinyl magnetic gasket is attached to each drawer for positive seal.

## REFRIGERATION SYSTEM

Self-contained refrigeration system utilizes R134a refrigerant metered by expansion valve. Automatic (hot gas) condensate evaporation is provided. Interior forced air system, with high humidity evaporator coils, provide the ideal environment for food preservation. Removable front thermometer panel and grille allows for easy access to complete lift-out refrigeration system.

| CHARACTERISTICS               | CBR84-1               |
|-------------------------------|-----------------------|
| Net Capacity                  | 17.5                  |
| Width, Overall (in.)          | 84"                   |
| Depth, Overall (inc. Handles) | 32"                   |
| Depth, Drawer(s)              | 57 1/4"               |
| Height, Overall (in.)         | 26 3/4"               |
| No. of Drawers                | 4                     |
| Upper Drawer Pans             | (2) - 12" x 20" -x 6" |
| Lower Drawer Pans             | (2) - 12" x 20" x 4"  |
| Top Load Rating (lbs.)        | 800                   |

## ELECTICAL DATA

|                 |          |
|-----------------|----------|
| Cabinet Voltage | 115/60/1 |
| NEMA Plug       | 5-15P    |
| Total Amperes   | 4.5      |

**NOTE:** Plug style, voltage and full load amps may vary depending on certain options selected such as optional voltages and compressor upgrades.

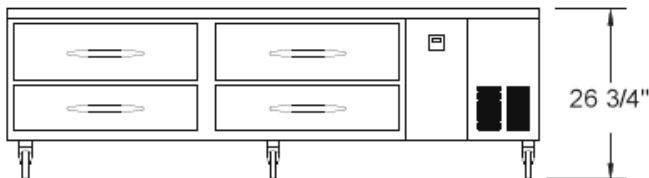
## REFRIGERATION DATA

|                      |        |
|----------------------|--------|
| Condensing Unit Size | 1/5 HP |
| Refrigerant          | R-134A |

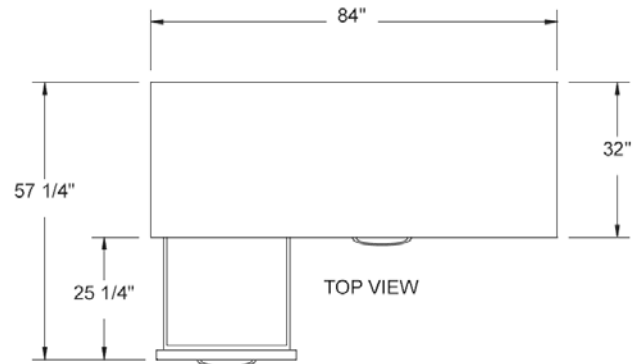
| CRATED DIMENSIONS | Lbs. |
|-------------------|------|
| Two Section       | 569  |

**Remote units use R-404A refrigerant standard and come with 6" legs**

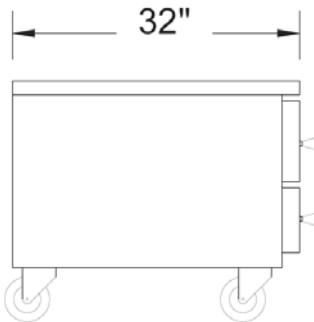
**Note:** In order to provide peak operating performance the cabinet must have a 2 inch all around clearance and 12 inches above the top of the condensing unit. This endures an adequate air supply and space for routine maintenance and/or service if required.



FRONT VIEW



TOP VIEW



END VIEW